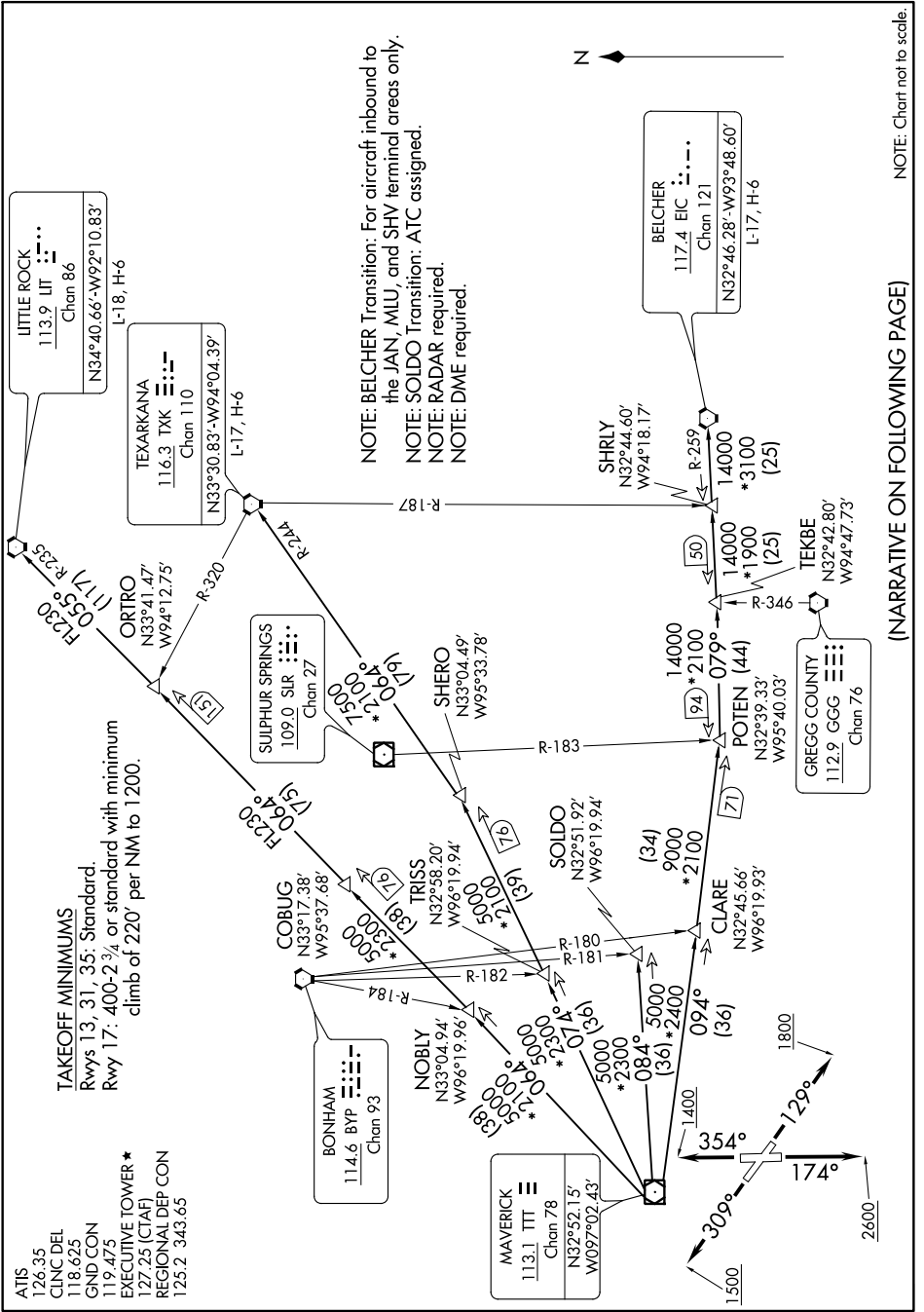


DALLAS ONE DEPARTURE

SC-2, 16 JUN 2022 to 14 JUL 2022



ATIS 126.35
 CLNC DEL 118.625
 GND CON 119.475
 EXECUTIVE TOWER * 127.25 (CTAF)
 REGIONAL DEP CON 125.2 343.65

TAKEOFF MINIMUMS
 Rwy 13, 31, 35: Standard.
 Rwy 17: 400-2 3/4 or standard with minimum climb of 220' per NM to 1200'.

NOTE: BELCHER Transition: For aircraft inbound to the JAN, MLU, and SHV terminal areas only.
 NOTE: SOLDO Transition: ATC assigned.
 NOTE: RADAR required.
 NOTE: DME required.

NOTE: Chart not to scale.

(NARRATIVE ON FOLLOWING PAGE)

SC-2, 16 JUN 2022 to 14 JUL 2022

DALLAS ONE DEPARTURE