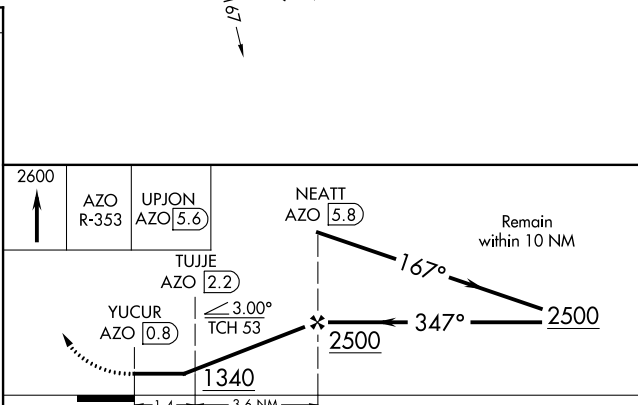
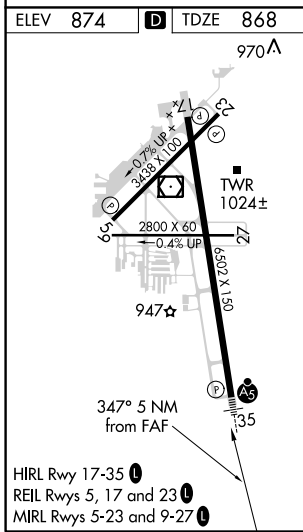
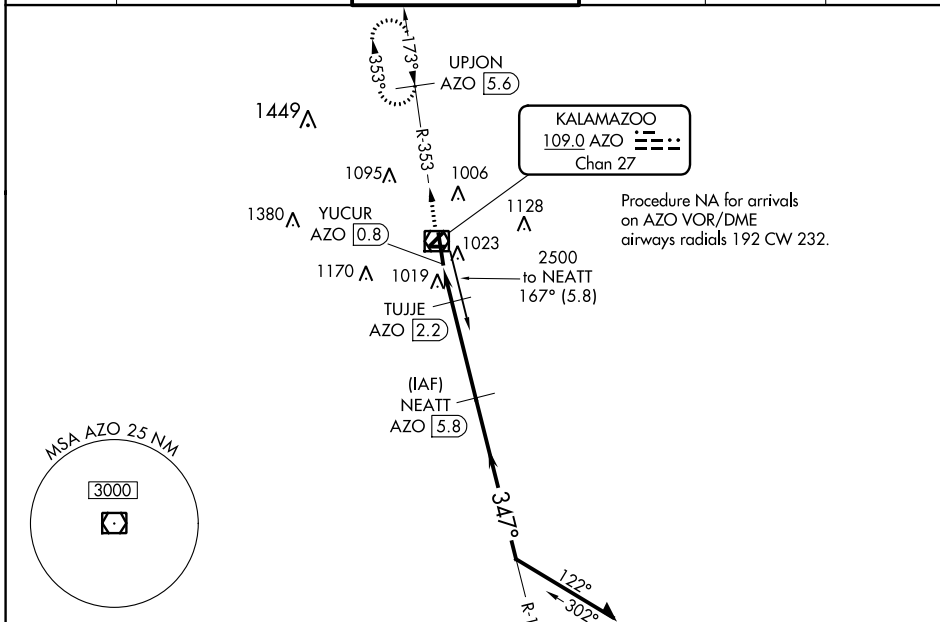


VOR/DME AZO	APP CRS	Rwy Idg	6502
109.0	347°	TDZE	868
Chan 27		Apt Elev	874

VOR RWY 35

KALAMAZOO/BATTLE CREEK INTL (AZO)

DME required.		KALAMAZOO TOWER ★		GND CON		CLNC DEL		UNICOM	
<p>⚠ Circling to Rwy 5, 9, 17, 23, 27 NA at night. For inop ALS, increase S-35 Cat C and D visibility to RVR 6000.</p> <p>ASR</p>		<p>118.3 (CTAF) 257.875</p>		121.9		121.75		122.95	



CATEGORY	A	B	C	D
S-35	1280/24	412 (500-½)	1280/40	412 (500-¾)
C CIRCLING	1380-1	506 (600-1)	1480-1¾ 606 (700-1¾)	1480-2 606 (700-2)

EC-1, 16 JUN 2022 to 14 JUL 2022

EC-1, 16 JUN 2022 to 14 JUL 2022