
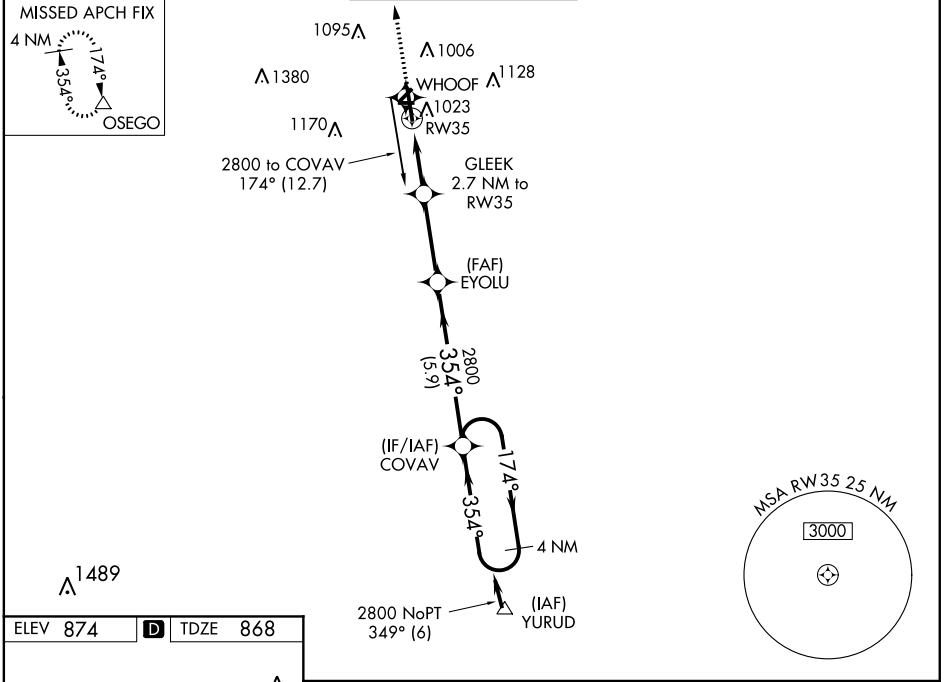


WAAS CH <b>61102</b> <b>W35A</b>	APP CRS <b>354°</b>	Rwy Idg <b>6502</b> TDZE <b>868</b> Apt Elev <b>874</b>
--	------------------------	---

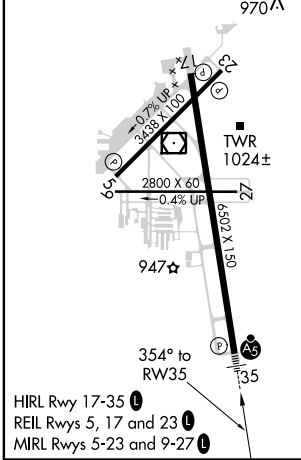
# RNAV (GPS) RWY 35

KALAMAZOO/BATTLE CREEK INTL (AZO)

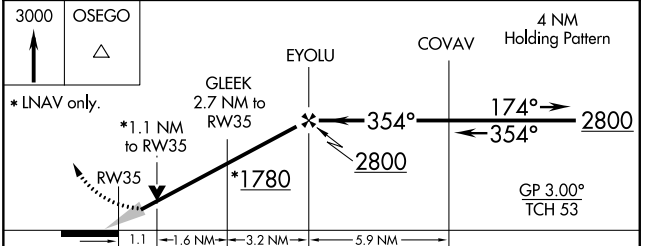
RNP APCH.		KALAMAZOO TOWER * <b>118.3</b> (CTAF) <b>0 257.875</b>		GND CON <b>121.9</b>	CLNC DEL <b>121.75</b>	UNICOM <b>122.95</b>
<p><b>ASR</b> For uncompensated Baro-VNAV systems, LNAV/VNAV NA below -19°C or above 54°C. Circling Rwy 5, 9, 17, 23, 27 NA at night. **RVR 1800 authorized with use of FD or AP or HUD to DA.</p>		<p>MALS R</p> 		<p>MISSED APPROACH: Climb to 3000 direct OSEGO and hold.</p>		
ATIS <b>127.25</b>	GREAT LAKES APP CON * <b>121.2 239.25</b>	KALAMAZOO TOWER * <b>118.3</b> (CTAF) <b>0 257.875</b>		GND CON <b>121.9</b>	CLNC DEL <b>121.75</b>	UNICOM <b>122.95</b>



ELEV 874	<b>D</b>	TDZE 868
----------	----------	----------



HIRL Rwy 17-35  
REIL Rwys 5, 17 and 23  
MIRL Rws 5-23 and 9-27



CATEGORY	A	B	C	D
LPV DA **		1068/24	200 (200-½)	
LNAV/VNAV DA		1264/35	396 (400-¾)	
LNAV MDA	1280/24	412 (500-½)	1280/40	412 (500-¾)
<b>C</b> CIRCLING	1380-1	506 (600-1)	1480-1¾ 606 (700-1¾)	1480-2 606 (700-2)

EC-1, 16 JUN 2022 to 14 JUL 2022

EC-1, 16 JUN 2022 to 14 JUL 2022