

|  |                        |                             |   |
|--|------------------------|-----------------------------|---|
| WAAS<br>CH <b>57933</b><br><b>W17A</b> | APP CRS<br><b>174°</b> | Rwy Idg<br>TDZE<br>Apt Elev | <b>6502</b><br><b>867</b><br><b>874</b> |
|--|------------------------|-----------------------------|---|

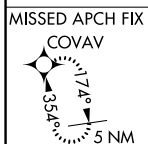
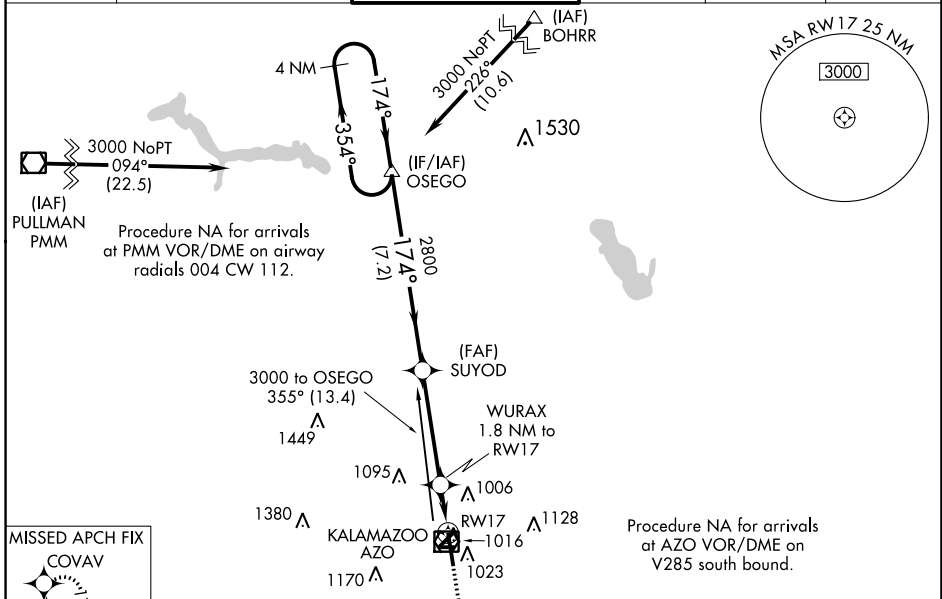
# RNAV (GPS) RWY 17

KALAMAZOO/BATTLE CREEK INTL (AZO)

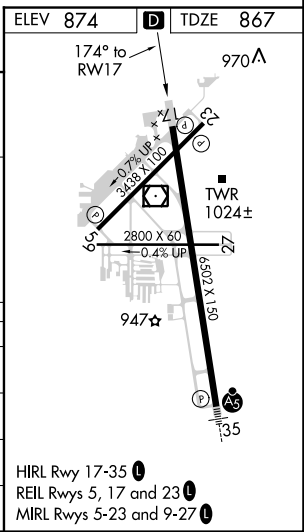
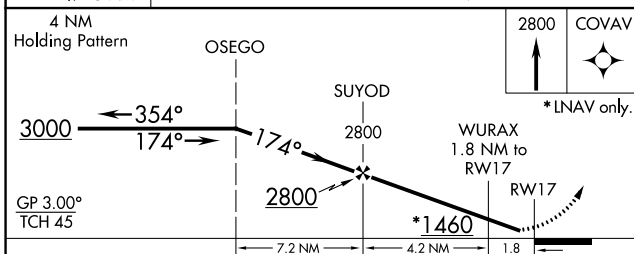
**ASR** Baro-VNAV NA when using Battle Creek altimeter setting. For uncompensated Baro-VNAV systems, LNAV/VNAV NA below -21°C (-5°F) or above 54°C (130°F). DME/DME RNP-0.3 NA. Helicopter visibility reduction below 3/4 SM not authorized. When local altimeter setting not received, use Battle Creek altimeter setting and increase all DA 44 feet and all MDA 60 feet. Increase LPV all Cats and LNAV Cat C/D visibility 1/8 mile. Increase LNAV/VNAV visibility all Cats 1/4 mile. Circling to Rwy 9/27 and 5/23 NA at night.

**MISSED APPROACH:**  
Climb to 2800 direct COVAV and hold.

|                       |  |   |                         |                           |                         |
|-----------------------|--|---|-------------------------|---------------------------|-------------------------|
| ATIS<br><b>127.25</b> | GREAT LAKES APP CON *<br><b>121.2 239.25</b> | KALAMAZOO TOWER *<br><b>118.3</b> (CTAF) <b>0 257.875</b> | GND CON<br><b>121.9</b> | CLNC DEL<br><b>121.75</b> | UNICOM<br><b>122.95</b> |
|-----------------------|--|---|-------------------------|---------------------------|-------------------------|



Procedure NA for arrivals at AZO VOR/DME on V285 south bound.



| CATEGORY     | A      | B           | C               | D               |
|--------------|--------|-------------|-----------------|-----------------|
| LPV DA       |        | 1156-1      | 289 (300-1)     |                 |
| LNAV/VNAV DA |        | 1185-1      | 318 (400-1)     |                 |
| LNAV MDA     | 1320-1 | 453 (500-1) | 1320-1 3/8      | 453 (500-1 3/8) |
| CIRCLING     | 1380-1 | 506 (600-1) | 1480-1 3/4      | 1480-2          |
|              |        |             | 606 (700-1 3/4) | 606 (700-2)     |

EC-1, 16 JUN 2022 to 14 JUL 2022

EC-1, 16 JUN 2022 to 14 JUL 2022