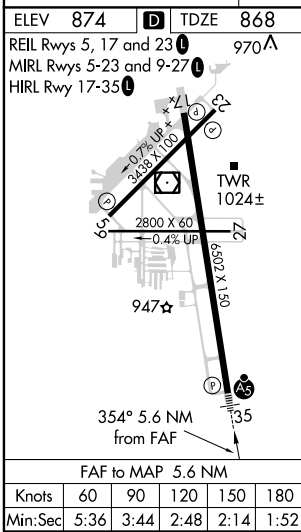
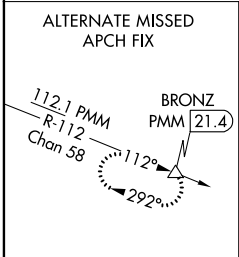
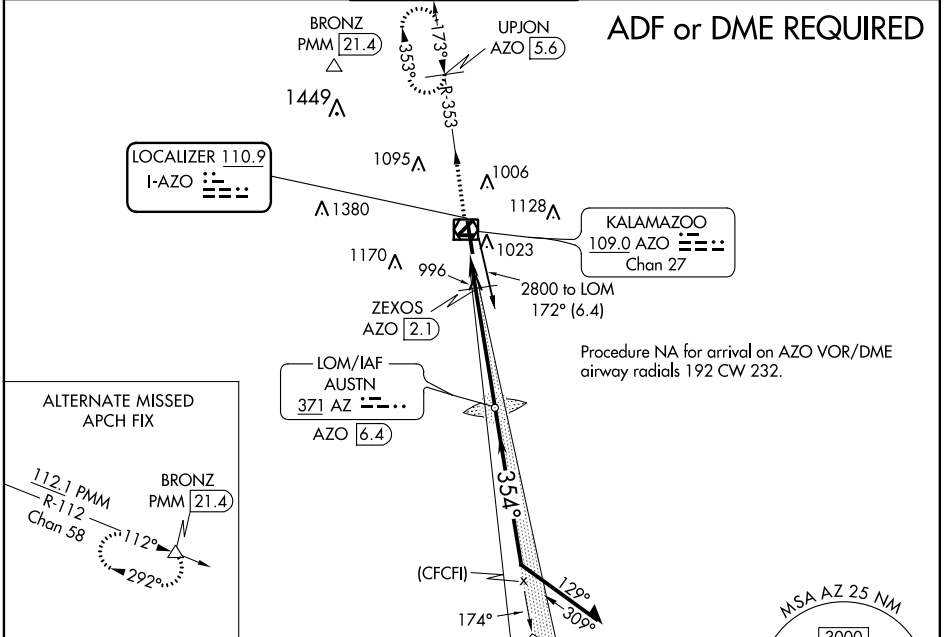


LOC I-AZO <b>110.9</b>	APP CRS <b>354°</b>	Rwy Idg TDZE Apt Elev	<b>6502</b> <b>868</b> <b>874</b>
---------------------------	------------------------	-----------------------------	---

**ILS or LOC RWY 35**  
KALAMAZOO/BATTLE CREEK INTL (AZO)

<b>ASR</b>	Night landing: Rwy 5, 9, 23, 27 NA. DME required. For inop MALSRL, increase S-LOC 35 Cats C and D visibility to 1 $\frac{1}{2}$ mile. ** RVR 1800 authorized with use of FD or AP or HUD to DA.	<b>MALSRL</b>	MISSED APPROACH: Climb to 2600 on AZO VOR/DME R-353 to UPJON/AZO VOR/DME 5.6 DME and hold.
------------	--	---------------	--

ATIS <b>127.25</b>	GREAT LAKES APP CON * <b>121.2 239.25</b>	<b>KALAMAZOO TOWER *</b> <b>118.3 (CTAF) 0 257.875</b>	GND CON <b>121.9</b>	CLNC DEL <b>121.75</b>	UNICOM <b>122.95</b>
-----------------------	--	---	-------------------------	---------------------------	-------------------------



2600	AZO R-353	UPJON AZO 5.6	AUSTN LOM AZO 6.4	Remain within 10 NM
* LOC only	AZO 0.8	ZEXOS AZO 2.1	2800	GS 3.00° TCH 53
CATEGORY	A	B	C	D
S-ILS 35	** 1068/24		200 (200- $\frac{1}{2}$ )	
S-LOC 35	1260/24	392 (400- $\frac{1}{2}$ )	1260/35	392 (400- $\frac{5}{8}$ )
<b>C</b> CIRCLING	1380-1	506 (600-1)	1480-1 $\frac{3}{4}$ 606 (700-1 $\frac{3}{4}$ )	1480-2 606 (700-2)

EC-1, 16 JUN 2022 to 14 JUL 2022

EC-1, 16 JUN 2022 to 14 JUL 2022