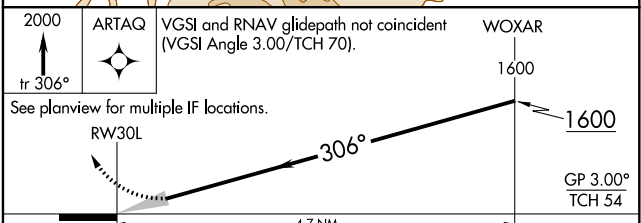
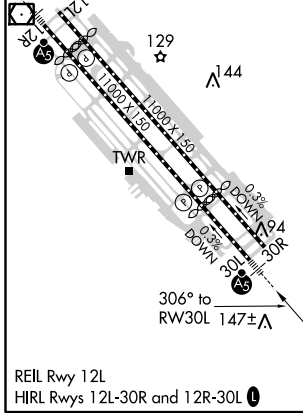
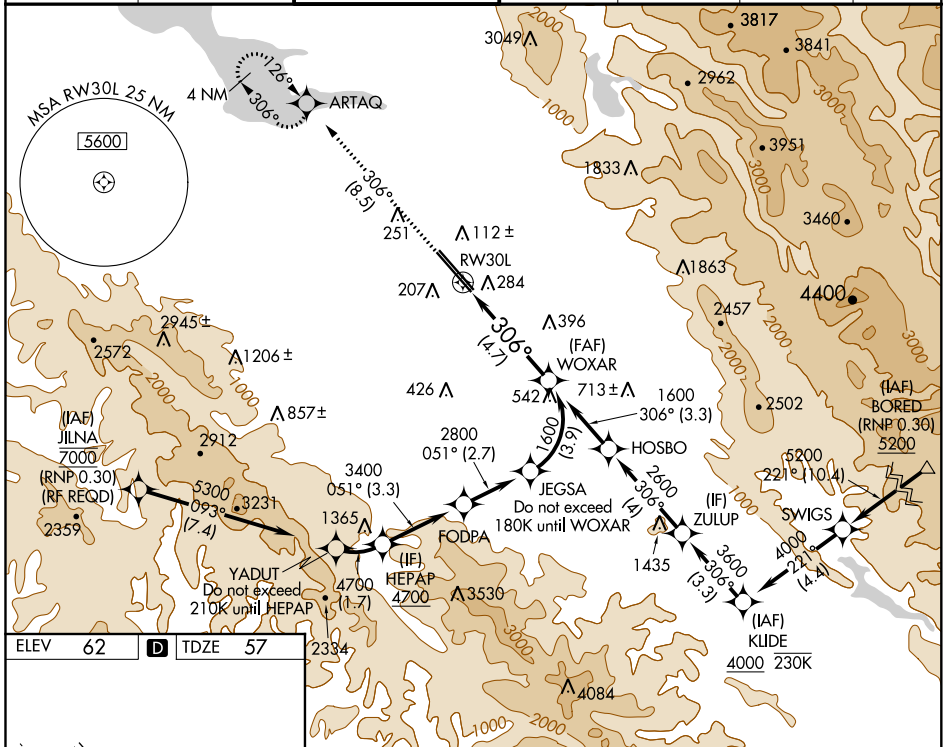


APP CRS <b>306°</b>	Rwy Idg TDZE Apt Elev	<b>7614</b> <b>57</b> <b>62</b>
------------------------	-----------------------------	---------------------------------------

# RNAV (RNP) Z RWY 30L

NORMAN Y MINETA SAN JOSE INTL (SJC)

RNP AR APCH.			MALSR		MISSED APPROACH: Climb to 2000 on track 306° to ARTAQ and hold.	
▼ For uncompensated Baro-VNAV systems, procedure NA below 1°C or above 54°C. For inop ALS, increase RNP 0.10 all Cats visibility to RVR 5500 and increase RNP 0.30 all Cats visibility to 1½ SM.						
D-ATIS <b>126.95</b>	NORCAL APP CON <b>120.1 290.25</b>	SAN JOSE TOWER ★ <b>124.0 (CTAF) 257.6</b>	GND CON <b>121.7</b>	CLNC DEL <b>118.0</b>	CPDLC	UNICOM <b>122.95</b>



CATEGORY	A	B	C	D
RNP 0.10 DA		430/35	373 (400-¾)	
RNP 0.20 DA		464/40	407 (500-¾)	
RNP 0.30 DA		541/50	484 (500-1)	

## AUTHORIZATION REQUIRED