

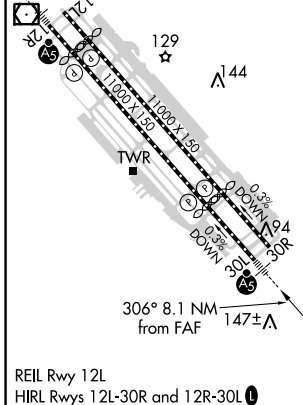
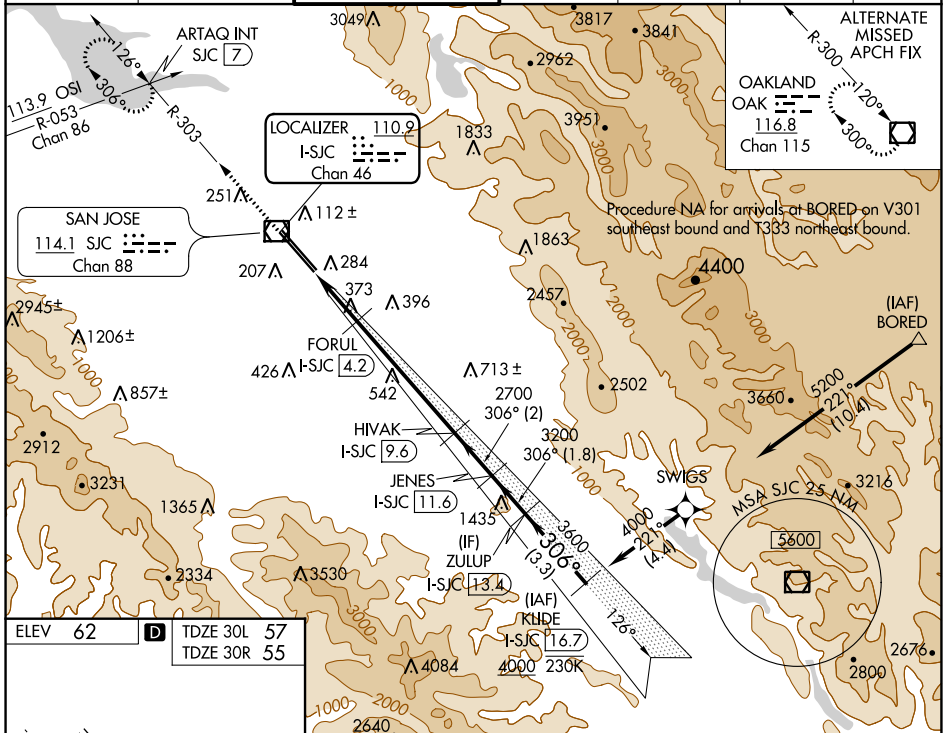
LOC/DME I-SJC 110.9 Chan 46	APP CRS 306°	Rwy Idg 7614 57 62	30L 7597 55 62
--	------------------------	-----------------------------	--------------------------------

ILS or LOC RWY 30L

NORMAN Y MINETA SAN JOSE INTL (SJC)

RNAV 1-GPS or RADAR required for procedure entry. DME required. From BORED: RNAV 1-GPS required.		MALS Rwy 30L	MISSED APPROACH: Climb to 1900 on SJC VOR/DME R-303 to ARTAQ INT/SJC 7 DME and hold.
# RVR 1800 authorized with use of FD or AP or HUD to DA.			

D-ATIS 126.95	NORCAL APP CON 120.1 290.25	SAN JOSE TOWER * 124.0 (CTAF) 0 257.6	GND CON 121.7	CLNC DEL 118.0	CPDLC	UNICOM 122.95
-------------------------	---------------------------------------	---	-------------------------	--------------------------	-------	-------------------------



1900	ARTAQ INT	VGSI and ILS glidepath not coincident (VGSI Angle 3.00/TCH 70).	KLIDE I-SJC 16.7
SJC R-303	FORUL I-SJC 4.2	JENES I-SJC 11.6	4000
*LOC only	*I-SJC 3	HIAK I-SJC 9.6	3600
	I-SJC 1.4	ZULUP I-SJC 13.4	3200
			2700
			1000*
			1.6 NM
			1.2 NM
			5.3 NM
			2 NM
			1.8 NM
			3.3 NM
			GS 3.00° TCH 54

CATEGORY	A	B	C	D
S-ILS 30L#	257/24 200 (200-½)			
S-LOC 30L	640/24	583 (600-½)	640-1¼	583 (600-1¼)
SIDESTEP 30R	640-1	585 (600-1)	640-1¾	585 (600-2)

SW-2, 16 JUN 2022 to 14 JUL 2022

SW-2, 16 JUN 2022 to 14 JUL 2022