

WAAS CH <b>61112</b> <b>W15A</b>	APP CRS <b>156°</b>	Rwy Idg TDZE <b>54</b> Apt Elev <b>54</b>	<b>5255</b>
--	------------------------	---	-------------

# RNAV (GPS) RWY 15

CAPE COD GATEWAY (HYA)

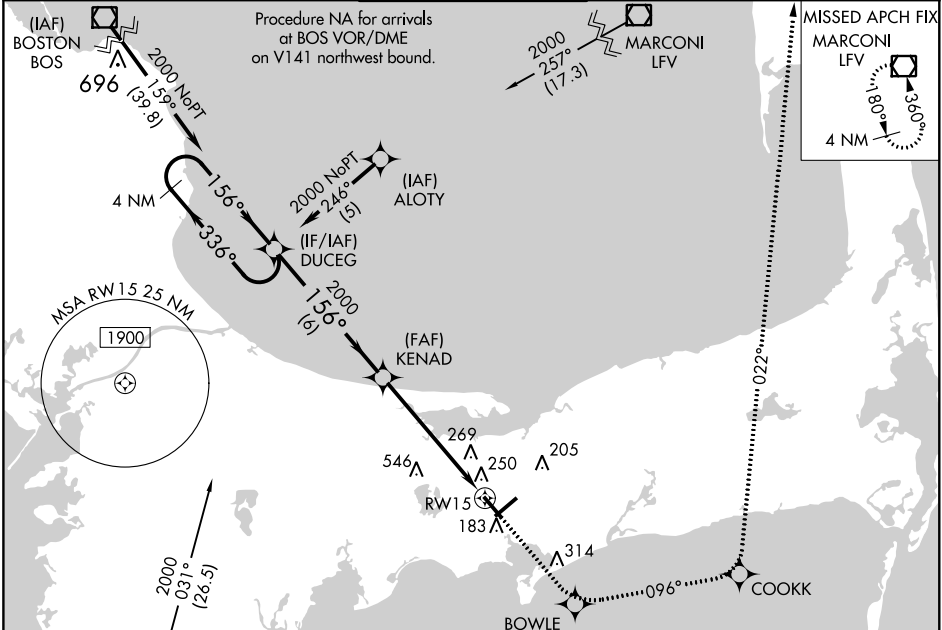
RNP APCH.

⚠ For uncompensated Baro-VNAV systems, LNAV/VNAV NA below -15°C (5°F) or above 39°C (102°F). When local altimeter setting not received, use Chatham altimeter setting: increase LPV DA to 286 feet; increase LNAV/VNAV DA to 601 feet; increase all MDAs 40 feet and visibility Cats C and D ¼ SM. For inop ALS, increase LNAV/VNAV all Cats visibility to 1 ½ SM. \*\*RVR 1800 authorized with use of FD or AP or HUD to DA (NA when using Chatham local altimeter setting).

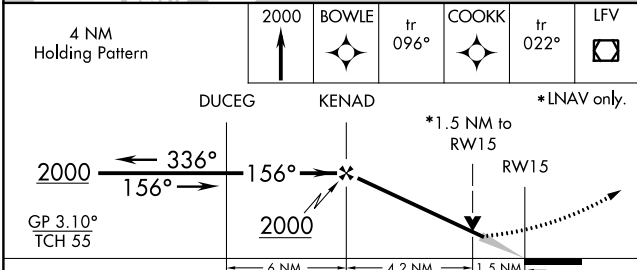
MALSR

MISSED APPROACH:  
Climb to 2000 direct BOWLE and on 096° track to COOKK and on 022° track to LFV VOR/DME and hold.

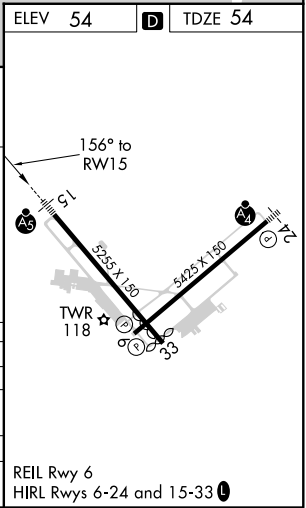
ATIS <b>123.8</b>	BOSTON APP CON ★ <b>118.2 284.6</b>	HYANNIS TOWER ★ <b>119.5 (CTAF) 0 257.8</b>	GND CON <b>118.45</b>	CLNC DEL <b>125.15</b>	UNICOM <b>122.95</b>
----------------------	--	--	--------------------------	---------------------------	-------------------------



ELEV	54	TDZE	54
------	----	------	----



CATEGORY	A	B	C	D
LPV DA**		254/24	200 (200-½)	
LNAV/VNAV DA		569/60	515 (600-1¼)	
LNAV MDA	600/24	546 (600-½)	600/60	546 (600-1¼)
CIRCLING	600-1	546 (600-1)	860-2 ¼ 806 (900-2¼)	860-2 ½ 806 (900-2½)



NE-1, 16 JUN 2022 to 14 JUL 2022

NE-1, 16 JUN 2022 to 14 JUL 2022