

LOC I-MCW <b>109.5</b>	APP CRS <b>180°</b>	Rwy Idg <b>6501</b>
		TDZE <b>1213</b>
		Apt Elev <b>1213</b>

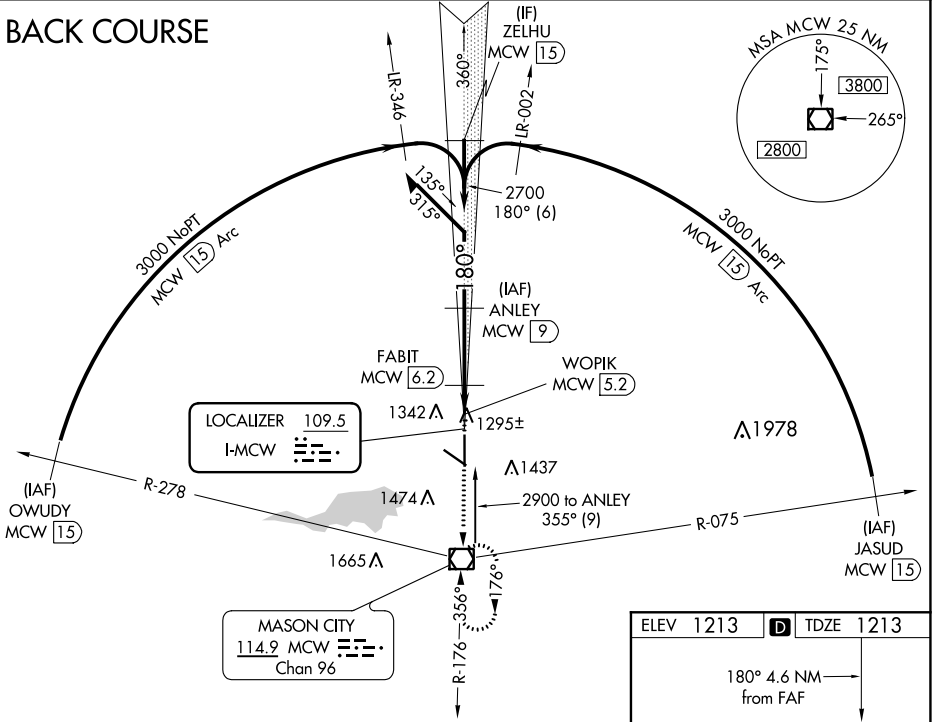
# LOC BC RWY 18

MASON CITY MUNI (MCW)

DME required for procedure entry.		MALS	MISSED APPROACH: Climb to 3000 direct MCW VOR/DME and hold.
▼	DME from MCW VOR/DME. Simultaneous reception of I-MCW and MCW DME required.	☉	
▲	For inoperative ALS, when using Charles City altimeter setting increase S-18 visibility Cats C and D to 1 3/8 SM. When local altimeter setting not received, use Charles City altimeter setting and increase all MDA 100 feet, increase S-18 visibility Cats C and D 1/4 SM and Circling Cat C 1/4 SM.		

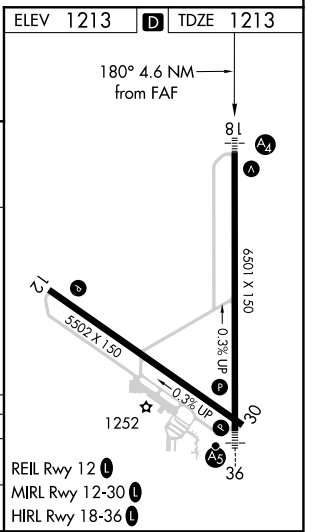
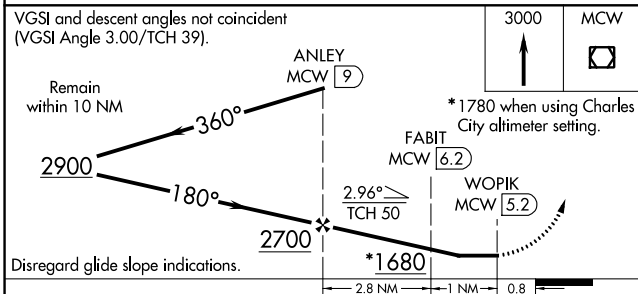
ASOS <b>120.3</b>	MINNEAPOLIS CENTER <b>127.3 257.675</b>	UNICOM <b>123.0 (CTAF) 0</b>
----------------------	--	---------------------------------

## BACK COURSE



NC-3, 16 JUN 2022 to 14 JUL 2022

NC-3, 16 JUN 2022 to 14 JUL 2022



CATEGORY	A	B	C	D
S-18		1560-3/4	347 (400-3/4)	
CIRCLING	1680-1 467 (500-1)	1760-1 547 (600-1)	1780-1 1/2 567 (600-1 1/2)	1780-2 567 (600-2)