

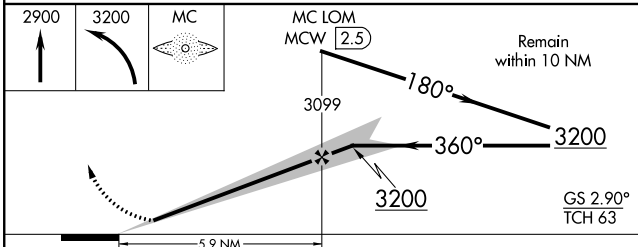
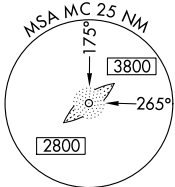
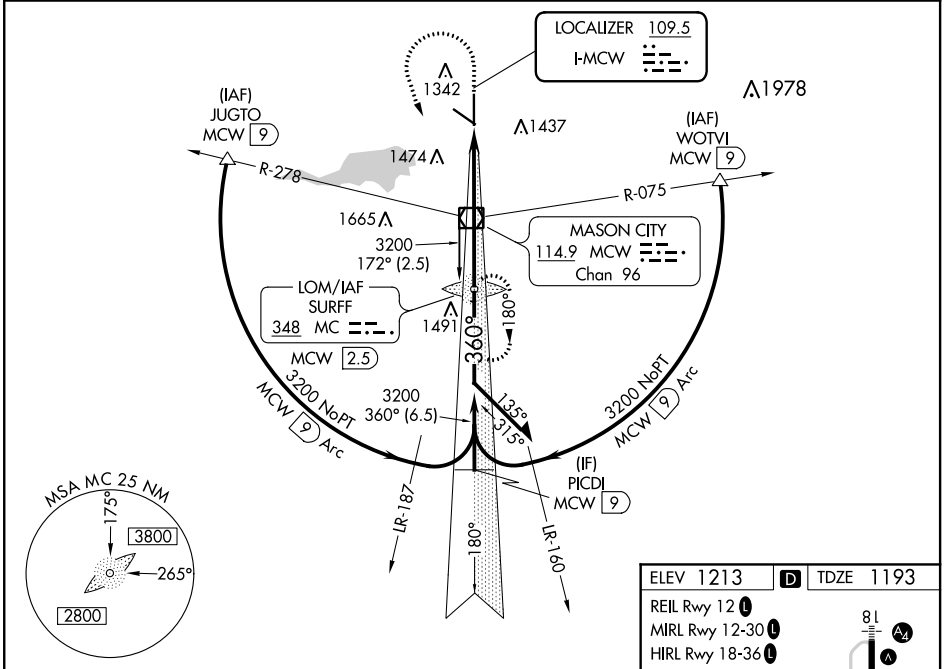
LOC I-MCW 109.5	APP CRS 360°	Rwy Idg 6401
		TDZE 1193
		Apt Elev 1213

ILS or LOC RWY 36

MASON CITY MUNI (MCW)

ADF or DME required for procedure entry. ADF required.		MALSR 	MISSED APPROACH: Climb to 2900 then climbing left turn to 3200 direct SURFF LOM/MCW VOR/DME 2.5 DME and hold.
<p>⚠ For inoperative ALS, increase S-LOC 36 Cats C/D visibility to 1 3/4 SM. For inoperative ALS, when using Charles City altimeter setting, increase S-ILS 36 all Cats visibility to 3/4 SM and S-LOC 36 Cats C/D visibility to 2 SM. When local altimeter setting not received, use Charles City altimeter setting and increase DA 87 feet and all MDA 100 feet; increase S-LOC 36 Cat C/D visibility 1/4 SM and Circling Cat C/D visibility 1/4 SM.</p>			

ASOS 120.3	MINNEAPOLIS CENTER 127.3 257.675	UNICOM 123.0 (CTAF)
----------------------	--	--------------------------------



ELEV 1213	D	TDZE 1193			
REIL Rwy 12	MIRL Rwy 12-30	HIRL Rwy 18-36			
FAF to MAP 5.9 NM					
Knots	60	90	120	150	180
Min:Sec	5:54	3:56	2:57	2:22	1:58

CATEGORY	A	B	C	D
S-ILS 36	1393-1/2		200 (200-1/2)	
S-LOC 36	1800-1/2 607 (600-1/2)		1800-1 3/8 607 (600-1 3/8)	
CIRCLING	1800-1 587 (600-1)		1800-2 587 (600-2)	

NC-3, 16 JUN 2022 to 14 JUL 2022

NC-3, 16 JUN 2022 to 14 JUL 2022