

LOHLA TWO DEPARTURE (RNAV)

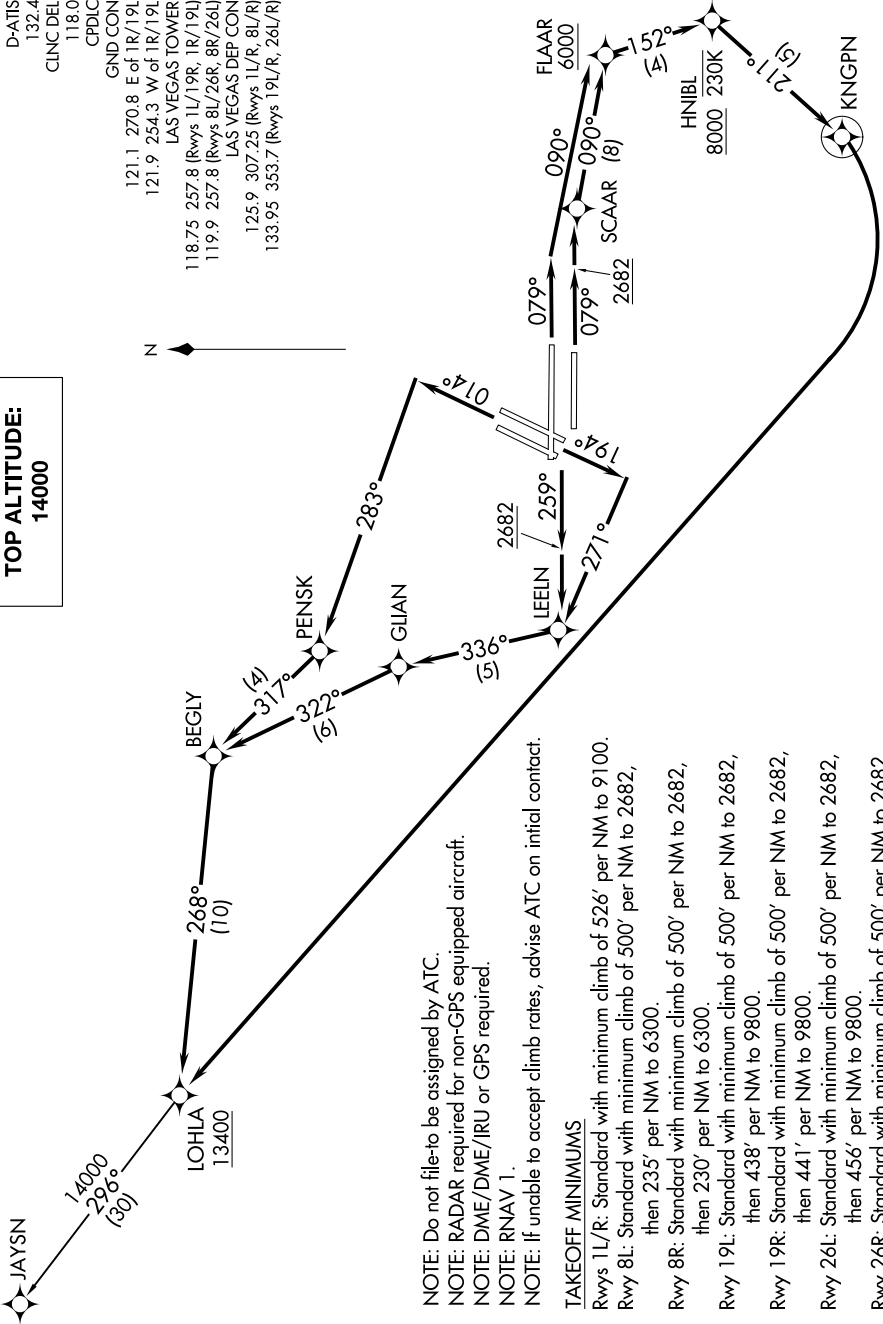
AL-662 (FAA)

HARRY REID INTL (LAS)
LAS VEGAS, NEVADA

SW-4, 16 JUN 2022 to 14 JUL 2022

D-AITS 132.4
CLNCDEL 118.0
CPDIC
GND CON
121.1 270.8 E of 1R/19L
121.9 254.3 W of 1R/19L
LAS VEGAS TOWER
118.75 257.8 (Rwys 1L/19R, 1R/19L)
119.9 257.8 (Rwys 8L/26R, 8R/26L)
LAS VEGAS DEP CON
125.9 307.25 (Rwys 1L/R, 8L/R)
133.95 353.7 (Rwys 19L/R, 26L/R)

**TOP ALTITUDE:
14000**



NOTE: Do not file-to be assigned by ATC.
 NOTE: RADAR required for non-GPS equipped aircraft.
 NOTE: DME/DME/IRU or GPS required.
 NOTE: RNAV 1.
 NOTE: If unable to accept climb rates, advise ATC on initial contact.

TAKEOFF MINIMUMS
 Rwy 1L/R: Standard with minimum climb of 526' per NM to 9100.
 Rwy 8L: Standard with minimum climb of 500' per NM to 2682, then 235' per NM to 6300.
 Rwy 8R: Standard with minimum climb of 500' per NM to 2682, then 230' per NM to 6300.
 Rwy 19L: Standard with minimum climb of 500' per NM to 2682, then 438' per NM to 9800.
 Rwy 19R: Standard with minimum climb of 500' per NM to 2682, then 441' per NM to 9800.
 Rwy 26L: Standard with minimum climb of 500' per NM to 2682, then 456' per NM to 9800.
 Rwy 26R: Standard with minimum climb of 500' per NM to 2682, then 468' per NM to 9800.

NOTE: Chart not to scale.

(NARRATIVE ON FOLLOWING PAGE)

LOHLA TWO DEPARTURE (RNAV)

LAS VEGAS, NEVADA
HARRY REID INTL (LAS)

SW-4, 16 JUN 2022 to 14 JUL 2022