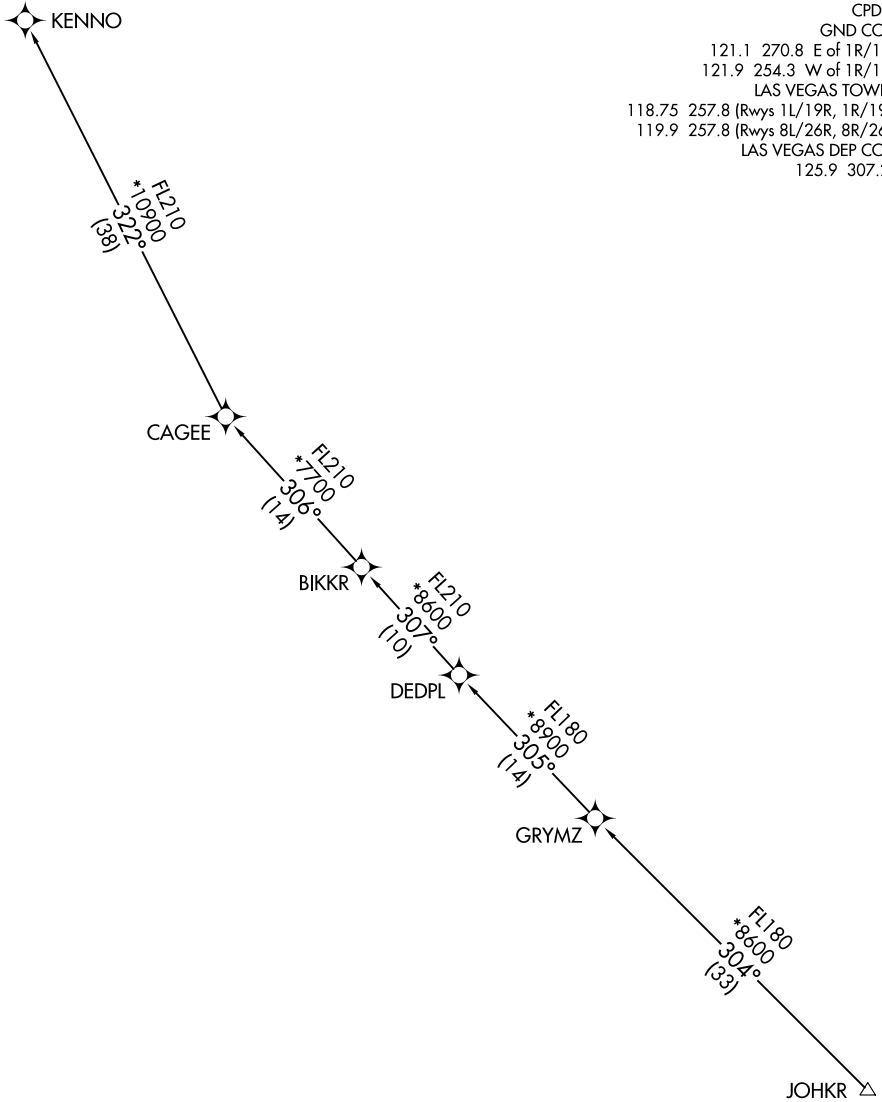


# JOHKR THREE DEPARTURE (RNAV) Transition Routes

RNAV 1 - DME/DME/IRU or GPS.  
RADAR required for non-GPS equipped aircraft.

**TOP ALTITUDE:  
FL190**

- D-ATIS 132.4
- CLNC DEL 118.0
- CPDLC
- GND CON 121.1 270.8 E of 1R/19L
- 121.9 254.3 W of 1R/19L
- LAS VEGAS TOWER 118.75 257.8 (Rwys 1L/19R, 1R/19L)
- 119.9 257.8 (Rwys 8L/26R, 8R/26L)
- LAS VEGAS DEP CON 125.9 307.25



SW-4, 16 JUN 2022 to 14 JUL 2022

SW-4, 16 JUN 2022 to 14 JUL 2022

(NARRATIVE ON FOLLOWING PAGE)

NOTE: Turbojet aircraft only.  
NOTE: Chart not to scale.