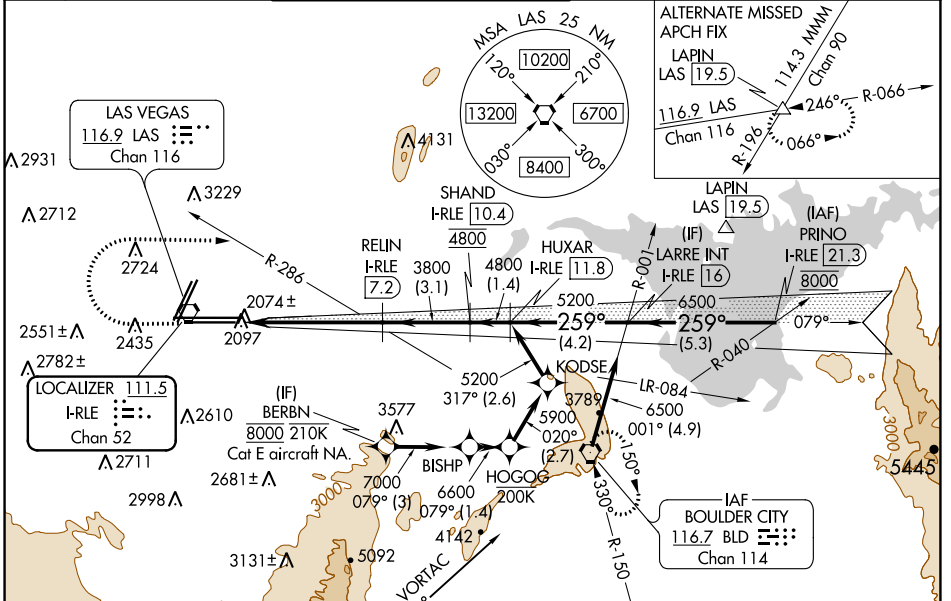


LOC/DME I-RLE 111.5 Chan 52	APP CRS 259°	Rwy Idg TDZE Apt Elev	26L 10526 2069 2181	26R 12638 2067 2181
--	------------------------	-----------------------------	---	---

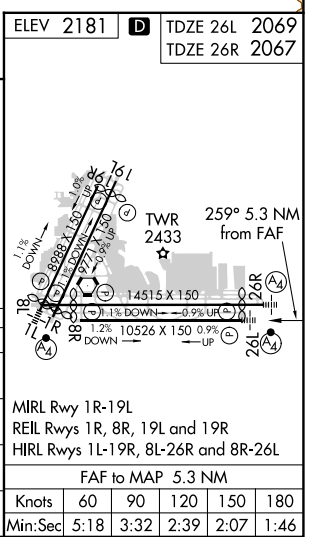
ILS or LOC RWY 26L

HARRY REID INTL (LAS)

DME required. From BERBN: RNP APCH-GPS required.		MALS Rwy 26L	MALS Rwy 26R	MISSED APPROACH: Climb to 3200 then climbing right turn to 6000 on heading 080° and BLD R-286 to BLD VORTAC and hold, continue climb-in-hold to 6000.		
<p>⚠ Inop table does not apply to S-ILS 26L and Sidestep 26R. For inop ALS, increase S-LOC 26L Cat C/D/E visibility to 1½ SM.</p>						
D-ATIS 132.4	LAS VEGAS APP CON 125.025 379.15 (West) 119.775 282.2 (East)	LAS VEGAS TOWER 118.75 257.8 (Rwy 1L/19R, 1R/19L) 119.9 257.8 (Rwy 8L/26R, 8R/26L)		GND CON 121.1 270.8 E of 1R/19L 121.9 254.3 W of 1R/19L	CLNC DEL 118.0	CPDLC



3200	6000	BLD R-286	VGSI and ILS glidepath not coincident (VGSI Angle 3.00/TCH 84).		PRINO I-RLE 21.3
*LOC only		RELIN I-RLE 3.1	SHAND I-RLE 7.2	HUXAR I-RLE 11.8	8000
1.2 NM		4.1 NM	3.1 NM	1.4 NM	4.2 NM
3800		3800	4800	5200	6500
See planview for multiple IF locations.				GS 3.00° TCH 60	
CATEGORY	A	B	C	D	E
S-ILS 26L	2269-¾ 200 (100-¾)				
S-LOC 26L	2520-¾ 451 (400-¾)	2520-1 451 (400-1)			
SIDESTEP 26R	2560-1 493 (400-1)	2560-1½ 493 (400-1½)	2560-2 493 (400-2)		
CIRCLING	3020-1¼ 839 (900-1¼)	3060-1¼ 879 (900-1¼)	3100-2¾ 919 (1000-2¾)	3540-3 1359 (1400-3)	



SW-4, 16 JUN 2022 to 14 JUL 2022

SW-4, 16 JUN 2022 to 14 JUL 2022