

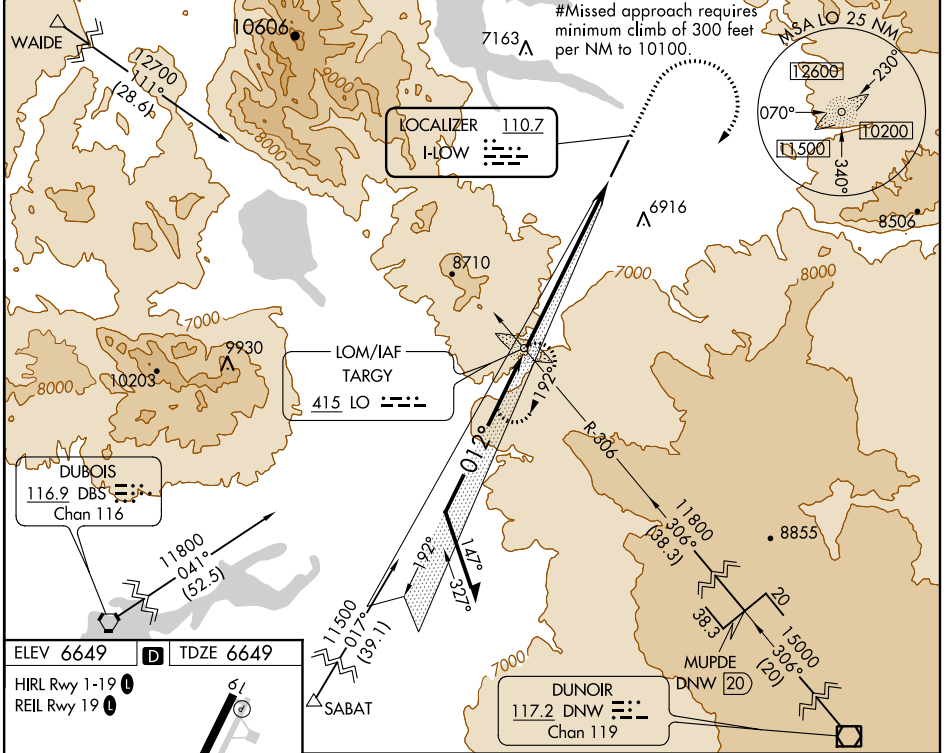
LOC I-LOW	APP CRS	Rwy Idg	8400
<b>110.7</b>	<b>012°</b>	TDZE	6649
		Apt Elev	6649

# ILS or LOC RWY 1

## YELLOWSTONE (WYS)

ADF required. DME required for MUPDE stepdown fix.		MALSR	MISSED APPROACH: Climb to 9000, then climbing right turn to 10100 direct TARGY LOM and hold.
▼	Obtain local altimeter setting on CTAF, when not received procedure		
▲ NA	NA. Inoperative table does not apply to S-LOC 1 Cat A. For inoperative MALSR, increase S-ILS 1 all Cats visibility to 2 3/4 mile.		
❄ -20°C			

AWOS-3P <b>118.1</b>	SALT LAKE CENTER <b>132.4 338.3</b>	UNICOM <b>123.0 (CTAF) 0</b>
-------------------------	--	---------------------------------



NW-1, 16 JUN 2022 to 14 JUL 2022

NW-1, 16 JUN 2022 to 14 JUL 2022