

NEW ORLEANS, LOUISIANA

# RNAV (GPS) RWY 4

APCH CRS	Rwy Idg	10,000
044°	TDZE	-2
	Arprt Elev	2

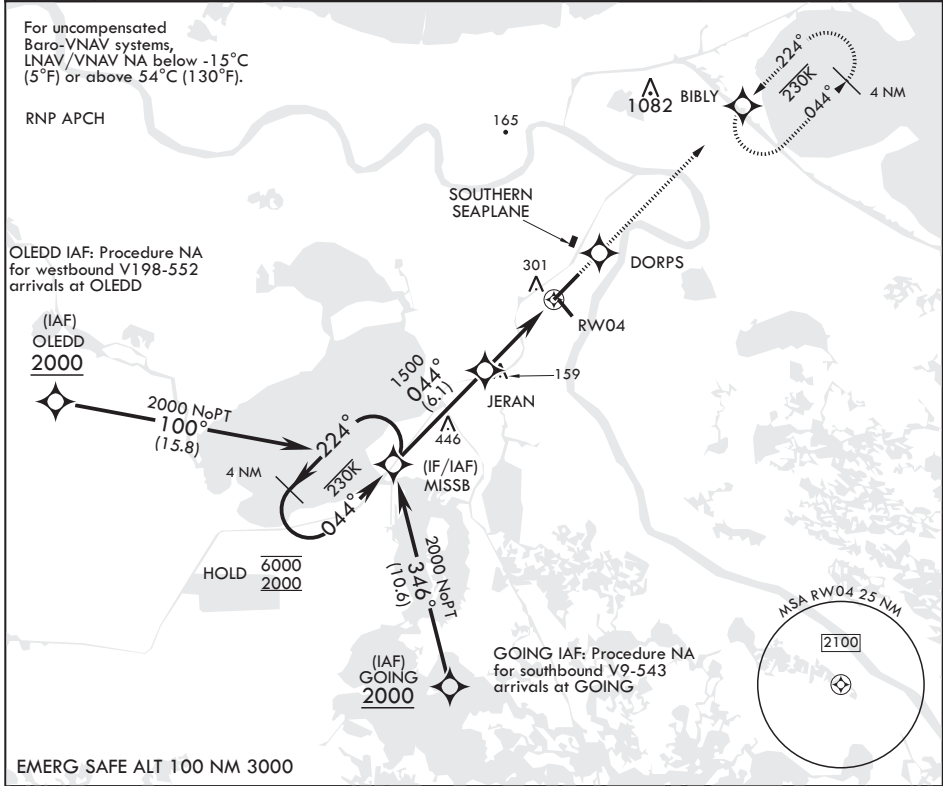
AL-630 (USN)

NEW ORLEANS NAS JRB (ALVIN CALLENDER FLD) (KNBG)

**V** \* When ALS inop, increase vis to 1 1/8 miles.  
 \*\* When ALS inop, increase CAT AB vis to 1 mile; CAT CD vis to 1 1/8 miles.

ALSF-1 MISSED APPROACH: Climb to 2100 direct DORPS, track 044° to BIBLY and hold.

ATIS*	APP CON/DEP CON	NAVY NEW ORLEANS TOWER*	GND CON	CLNC DEL	ASR/PAR
279.55	123.85 256.9	123.8 0* 340.2 (CTAF)	121.6 270.35	128.35 263.0	



6000 2000	← 224°	MISSB	044°	→	2000	1500	JERAN	1 NM to RWY04	RWY04	2100	DORPS	tr	044°	BIBLY	ELEV 2	TDZE -2
GP 3.00°	TCH 52							4.6 NM								

CATEGORY	A	B	C	D
LNAV/VNAV DA*	379-5/8 381 (400-5/8)			
LNAV MDA**	380-1/2	382 (400-1/2)	380-5/8	382 (400-5/8)
CIRCLING	640-1	638 (700-1)	640-1 1/4 638 (700-1 1/4)	640-2 638 (700-2)

HIRL Rwy 14-32  
 HIRL Rwy 4-22 0\*  
 REIL all Rwys

NEW ORLEANS, LOUISIANA

29°50'N - 90°02'W NEW ORLEANS NAS JRB (ALVIN CALLENDER FLD) (KNBG)

Amdt 5 04NOV21

# RNAV (GPS) RWY 4

SC-4, 16 JUN 2022 to 14 JUL 2022

SC-4, 16 JUN 2022 to 14 JUL 2022