

NEW ORLEANS, LOUISIANA

RNAV (GPS) RWY 14

| | | |
|----------|------------|------|
| APCH CRS | Rwy Idg | 6000 |
| 140° | TDZE | 2 |
| | Arprt Elev | 2 |

AL-630 (USN)

NEW ORLEANS NAS JRB (ALVIN CALLENDER FLD) (KNBG)

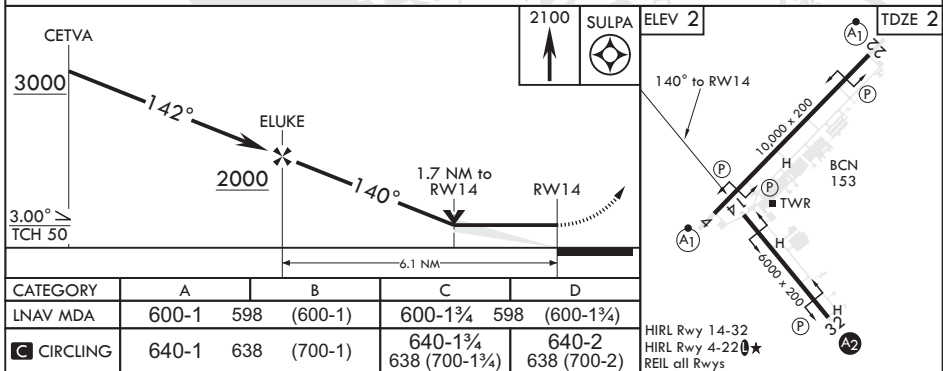
| | | | | | |
|--|--|---|--|--|--|
| | | MISSED APPROACH: Climbing right turn to 2100 direct SULPA and hold. | | | |
|--|--|---|--|--|--|

| | | | | | |
|--------|-----------------|-------------------------|--------------|--------------|---------|
| ATIS★ | APP CON/DEP CON | NAVY NEW ORLEANS TOWER★ | GND CON | CLNC DEL | ASR/PAR |
| 279.55 | 123.85 256.9 | 123.8 0★ 340.2 (CTAF) | 121.6 270.35 | 128.35 263.0 | |



RADAR REQUIRED

EMERG SAFE ALT 100 NM 3000



| CATEGORY | A | B | C | D |
|----------|-----------|---------|------------|----------|
| LNAV MDA | 600-1 598 | (600-1) | 600-1¼ 598 | (600-1¼) |
| CIRCLING | 640-1 638 | (700-1) | 640-1¼ 638 | (700-1¼) |
| | | | 640-2 638 | (700-2) |

HIRL Rwy 14-32
 HIRL Rwy 4-22 0★
 REIL all Rwys

SC-4, 16 JUN 2022 to 14 JUL 2022

SC-4, 16 JUN 2022 to 14 JUL 2022

NEW ORLEANS, LOUISIANA

29°50'N - 90°02'W NEW ORLEANS NAS JRB (ALVIN CALLENDER FLD) (KNBG)

Amdt 2 04NOV21

RNAV (GPS) RWY 14