

LOC/DME I-BDR <b>110.7</b> Chan 44	APP CRS <b>060°</b>	Rwy Idg 4677
		TDZE 7
		Apt Elev 9

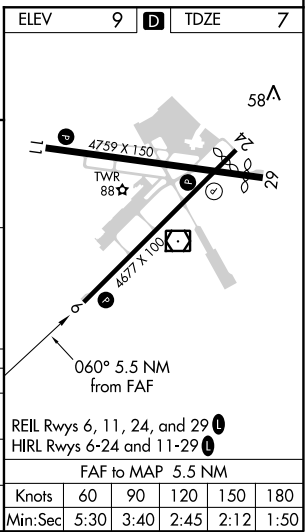
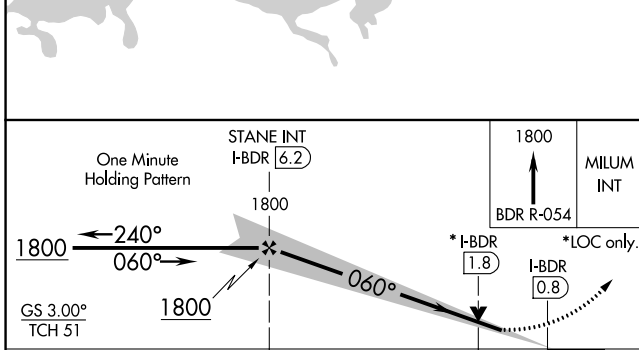
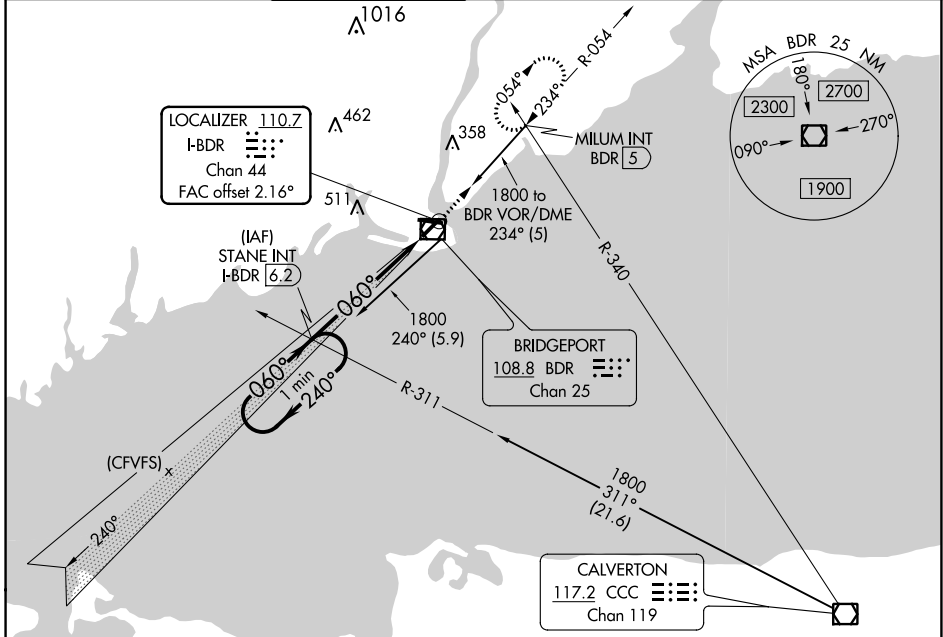
# ILS or LOC RWY 6

BRIDGEPORT/SIKORSKY (BDR)

**Autopilot coupled approach NA below 350.**  
**When VGSI inop, Circling Rwy 11 NA at night.**

**MISSED APPROACH: Climb to 1800 on the BDR VOR/DME R-054 to MILUM INT and hold.**

ATIS <b>119.15</b>	NEW YORK APP CON <b>124.075 343.65</b>	BRIDGEPORT TOWER* <b>120.9</b> (CTAF) <b>257.8</b>	GND CON <b>121.75 257.8</b>	CLNC DEL <b>121.75</b>	CLNC DEL <b>124.075</b> (When twr closed)	UNICOM <b>123.0</b>
-----------------------	---	---	--------------------------------	---------------------------	---	------------------------



CATEGORY	A	B	C	D
S-ILS 6		257-3/4	250 (300-3/4)	
S-LOC 6		380-1	373 (400-1)	
CIRCLING	480-1 471 (500-1)	620-1 611 (700-1)	820-2 1/2 811 (900-2 1/2)	820-2 3/4 811 (900-2 3/4)

NE-1, 16 JUN 2022 to 14 JUL 2022

NE-1, 16 JUN 2022 to 14 JUL 2022