

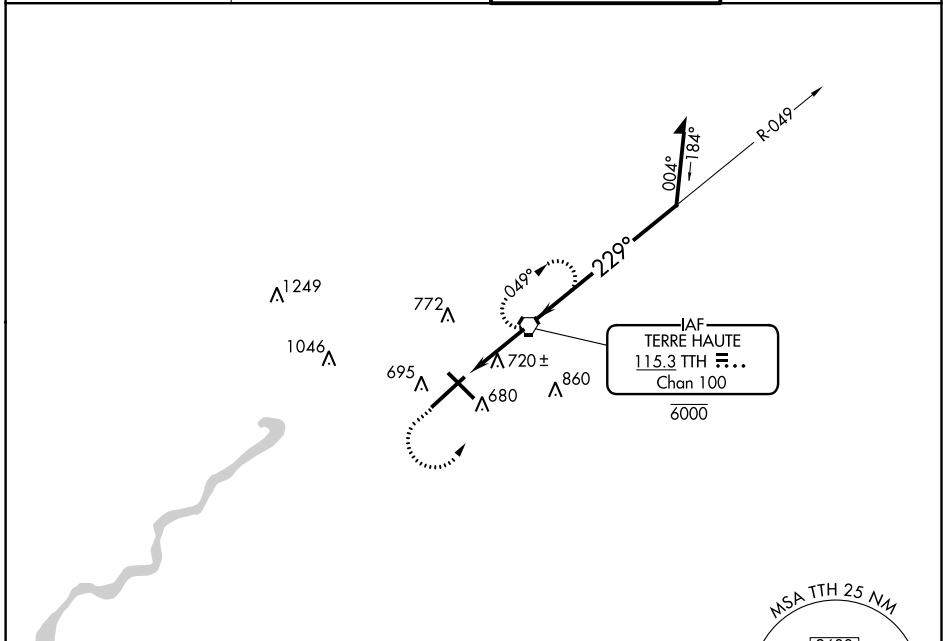
VORTAC TTH 115.3 Chan 100	APP CRS 229°	Rwy Idg TDZE Apt Elev	9020 582 589
--	------------------------	-----------------------------	---

VOR RWY 23
TERRE HAUTE RGNL (HUF)

⚠ VDP NA when using Paris, IL altimeter setting. When local altimeter setting not received, use Paris, IL altimeter setting and increase all MDA 80 feet, increase S-23 and Circling Cats C/D visibilities ¼ mile. Rwy 23 helicopter visibility reduction below ¾ SM NA.

⚠ MISSED APPROACH: Climb to 2300 then left turn direct TTH VORTAC and hold.

ATIS 127.5 269.375	HULMAN APP CON 125.45 339.8	HULMAN TOWER 134.725 239.0	GND CON 121.6 348.6
------------------------------	---------------------------------------	--------------------------------------	-------------------------------



EC-2, 16 JUN 2022 to 14 JUL 2022

EC-2, 16 JUN 2022 to 14 JUL 2022

ELEV 589	D	TDZE 582
----------	----------	----------

REIL Rwys 14, 23 and 32
HIRL Rwys 5-23 and 14-32

FAF to MAP 3 NM

Knots	60	90	120	150	180
Min:Sec	3:00	2:00	1:30	1:12	1:00

CATEGORY	A	B	C	D
S-23	1000-1		418 (500-1)	
C CIRCLING	1040-1	451 (500-1)	1220-1¾ 631 (700-1¾)	1220-2 631 (700-2)