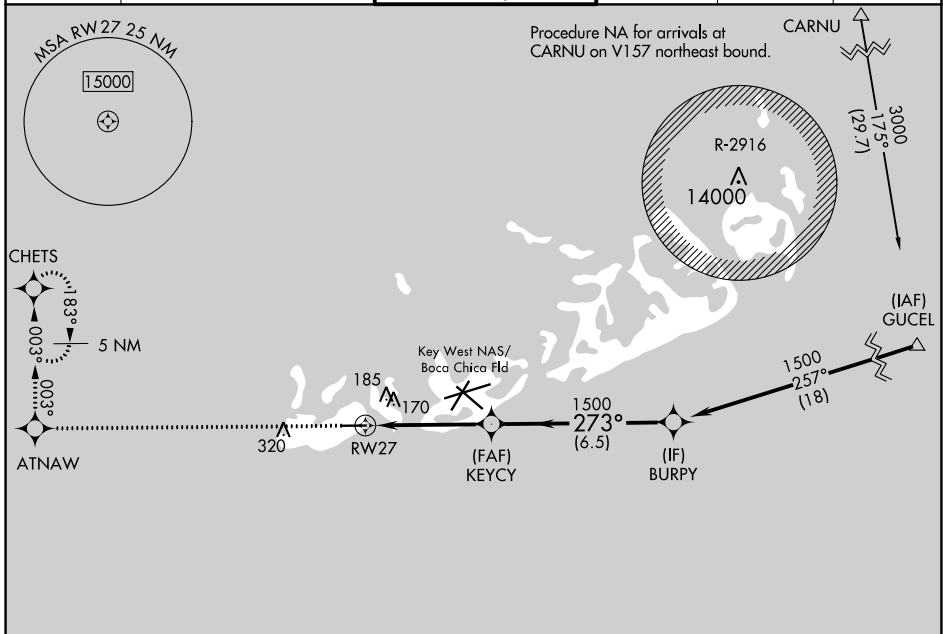


WAAS CH 82100 W27A	APP CRS 273°	Rwy Idg TDZE Apt Elev	4801 3 3
--	------------------------	-----------------------------	-------------------------------------

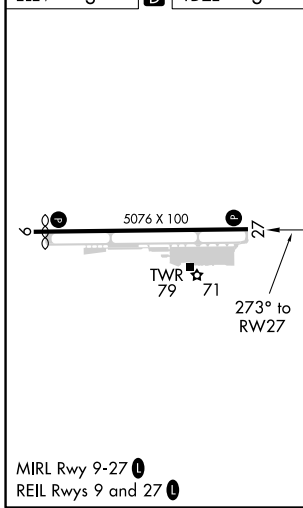
RNAV (GPS) RWY 27

KEY WEST INTL (EYW)

RNP APCH-GPS.		When local altimeter setting not received, use Key West NAS/Boca Chica Fld altimeter setting. Rwy 27 helicopter visibility reduction below 3/4 SM NA.		MISSED APPROACH: Climb to 2400 direct ATNAW and via 003° track to CHETS and hold.		
ATIS 119.675	NAVY KEY WEST APP CON * 124.025 313.7	KEY WEST TOWER * 118.2(CTAF) 257.8	GND CON 121.9	CLNC DEL 121.9	UNICOM 122.95	



ELEV 3	D	TDZE 3
--------	----------	--------



2400	ATNAW	CHETS	VGSI and RNAV glidepath not coincident (VGSI Angle 3.00/TCH 34).	
↑	003° tr		KEYCY	BURPY
			273°	1500
			1500	GP 3.00° TCH 45
			4.5 NM	6.5 NM
CATEGORY	A	B	C	D
LPV DA	253-1		250 (300-1)	
LNAV MDA	460-1	457 (500-1)	460-1 3/8	457 (500-1 3/8)
CIRCLING	500-1	497 (500-1)	620-1 3/4 617 (700-1 3/4)	620-2 617 (700-2)

SE-3, 16 JUN 2022 to 14 JUL 2022

SE-3, 16 JUN 2022 to 14 JUL 2022