

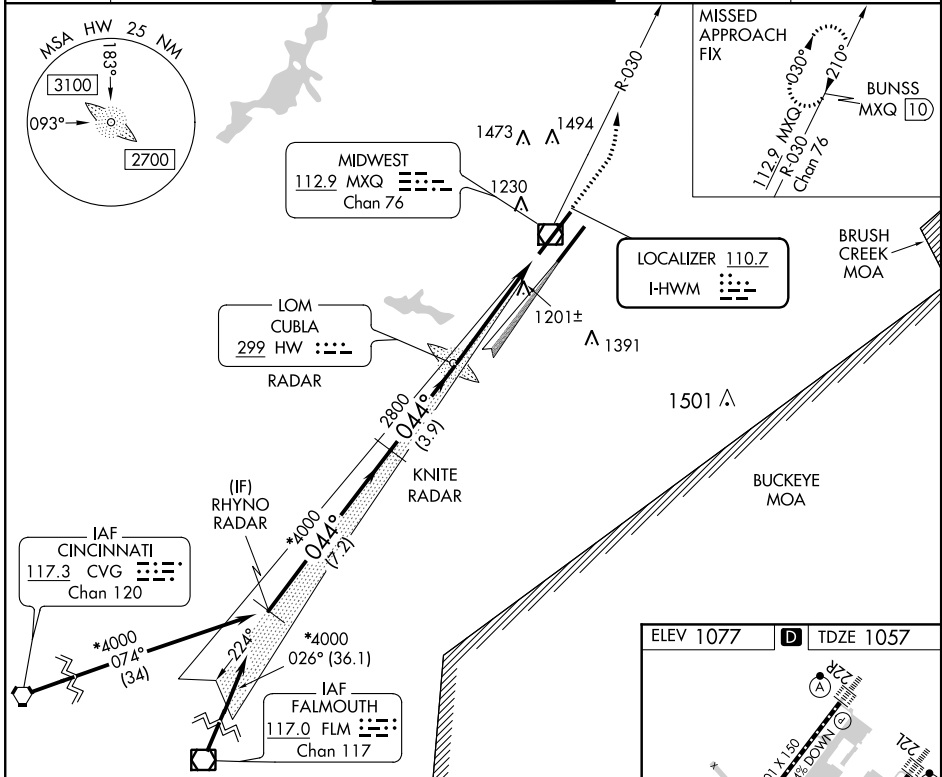
LOC I-HWM	APP CRS	Rwy Idg	<b>10701</b>
<b>110.7</b>	<b>044°</b>	TDZE	<b>1057</b>
		Apt Elev	<b>1077</b>

# ILS or LOC RWY 4L

WILMINGTON AIR PARK (ILN)

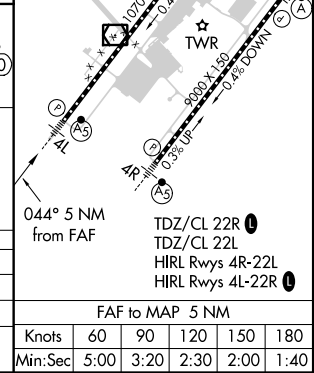
DME required. RADAR required to define RHYNO and KNITE.		MALSR	MISSED APPROACH: Climb to 1600 then climbing left turn to 4000 on MXQ VOR/DME R-030 to BUNSS/MXQ 10 DME and hold.
Simultaneous approach authorized. For inop ALS, increase S-LOC 4L Cats A/B visibility to RVR 5500 and Cats C/D visibility to RVR 6000. # RVR 1800 authorized with use of FD or AP or HUD to DA.			

D-ATIS	COLUMBUS APP CON	WILMINGTON TOWER *	GND CON	CLNC DEL
<b>124.925</b>	<b>118.85 269.275</b>	<b>119.475 (CTAF)</b>	<b>121.6</b>	<b>128.85</b>



VGSI and ILS glidepath not coincident (VGSI Angle 3.00°/TCH 62).

RHYNO RADAR	KNITE RADAR	HW LOM RADAR	BUNSS MXQ 10
*4000	*4000	2725	
GS 3.00° TCH 51	*2800 when authorized by ATC.	2800	
7.2 NM	3.9 NM	5 NM	
CATEGORY	A	B	C
S-ILS 4L #	1257/24 200 (200-½)		
S-LOC 4L	1460/24 403 (400-½)	1460/40 403 (400-¾)	
CIRCLING	1540-1 463 (500-1)	1860-2¼ 783 (800-2¼)	1860-2½ 783 (800-2½)



EC-2, 16 JUN 2022 to 14 JUL 2022

EC-2, 16 JUN 2022 to 14 JUL 2022