

LOC I-ILN 110.7	APP CRS 224°	Rwy Idg 10701 TDZE 1077 Apt Elev 1077
---------------------------	------------------------	--

ILS RWY 22R (SA CAT I)

WILMINGTON AIR PARK (ILN)

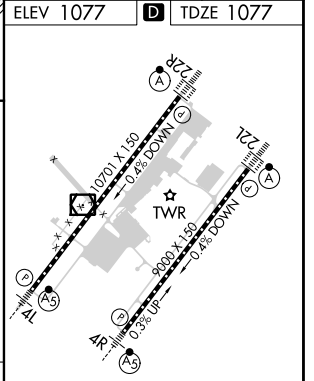
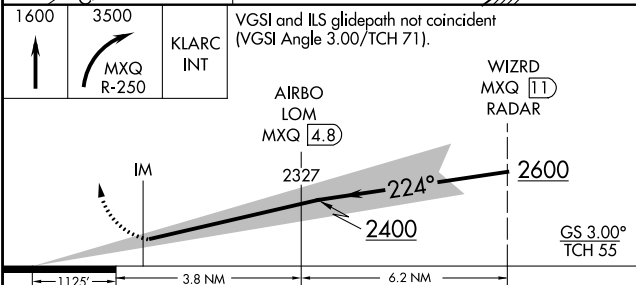
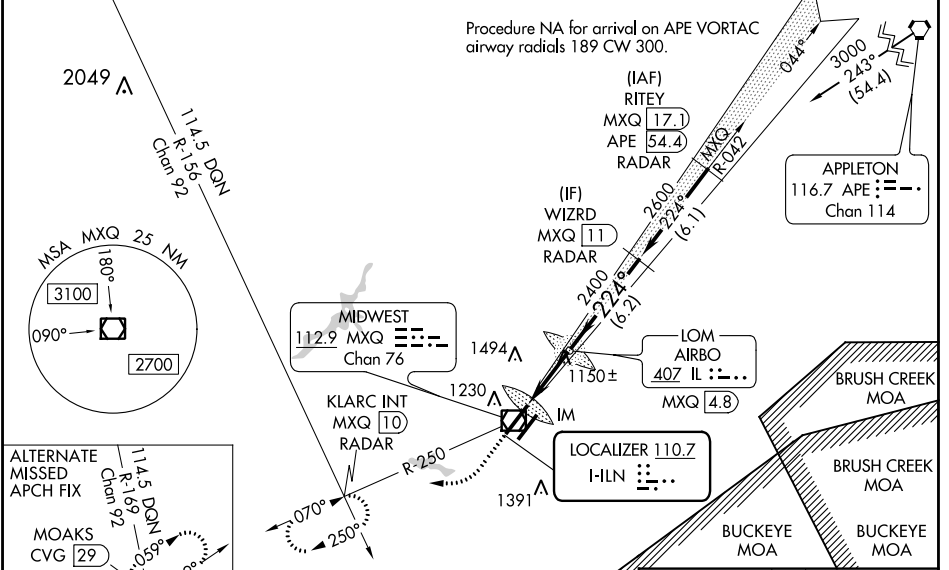
DME or RADAR required for procedure entry.

Simultaneous approach authorized. Requires specific OPSPEC, MSPEC, or LOA approval. Procedure NA when control tower closed. DME from MXQ VOR/DME. Simultaneous reception of I-ILN and MXQ DME required.

ALSIF-2

MISSED APPROACH: Climb to 1600 then climbing right turn to 3500 on MXQ VOR/DME R-250 to KLARC INT/MXQ 10 DME/RADAR and hold, continue climb-in-hold to 3500.

D-ATIS 124.925	COLUMBUS APP CON 118.85 269.275	WILMINGTON TOWER ★ 119.475 (CTAF) 0	GND CON 121.6	CLNC DEL 128.85
--------------------------	---	--	-------------------------	---------------------------



CATEGORY	A	B	C	D
S-ILS 22R	RA 148/14		150 DA 1227	

SA CATEGORY I ILS - SPECIAL AIRCREW & AIRCRAFT CERTIFICATION REQUIRED

TDZ/CL 22R **0**

TDZ/CL 22L

HIRL Rwy 4R-22L

HIRL Rwy 4L-22R **0**

EC-2, 16 JUN 2022 to 14 JUL 2022

EC-2, 16 JUN 2022 to 14 JUL 2022