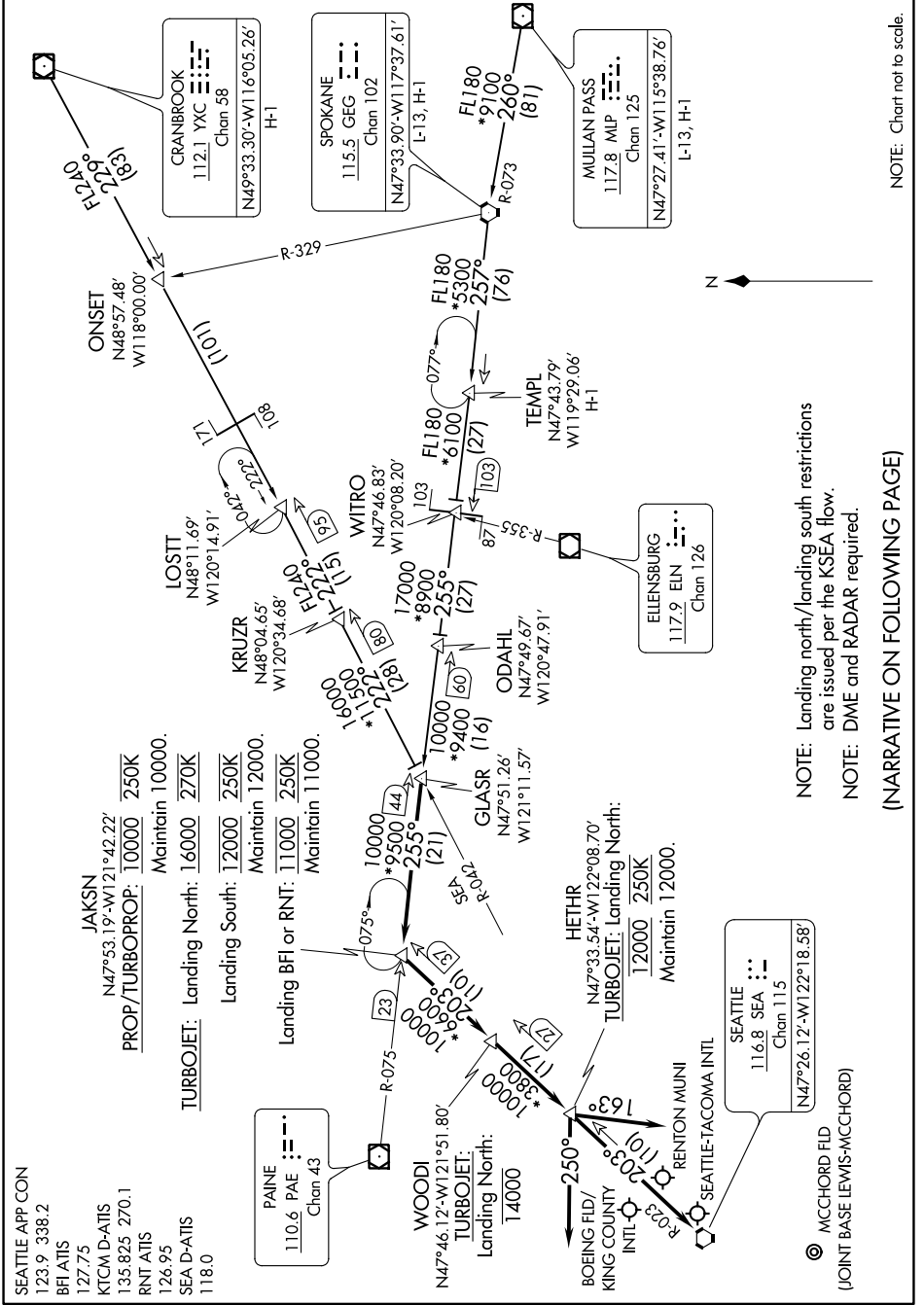


# GLASR ONE ARRIVAL

AL-582 (FAA)

SEATTLE, WASHINGTON

NW-1, 16 JUN 2022 to 14 JUL 2022



NOTE: Chart not to scale.

NOTE: Landing north/landing south restrictions are issued per the KSEA flow.  
NOTE: DME and RADAR required.

(NARRATIVE ON FOLLOWING PAGE)

NW-1, 16 JUN 2022 to 14 JUL 2022

# GLASR ONE ARRIVAL

SEATTLE, WASHINGTON