

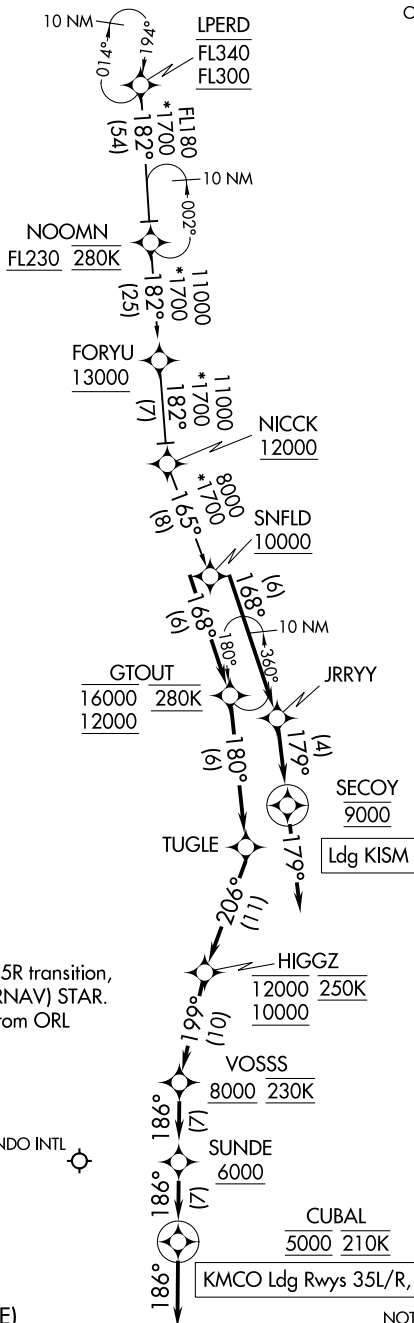
SNFLD TWO ARRIVAL (RNAV)

ORLANDO, FLORIDA

RNAV 1 - DME/DME/IRU or GPS.

RADAR required.

ORLANDO APP CON
 128.375 338.2
 ISM ATIS
 128.775
 MCO D-ATIS ARR
 121.25



NOTE: Landing North use runway 35R transition,
 landing South use GTOUT (RNAV) STAR.
 Expect runway assignment from ORL
 approach prior to SNFLD.

NOTE: Jet aircraft only.

ORLANDO INTL

KISSIMMEE GATEWAY

(NARRATIVE ON FOLLOWING PAGE)

NOTE: Chart not to scale.

SNFLD TWO ARRIVAL (RNAV)

ORLANDO, FLORIDA

SE-3, 16 JUN 2022 to 14 JUL 2022

SE-3, 16 JUN 2022 to 14 JUL 2022