

WAAS CH <b>99429</b> <b>W36B</b>	APP CRS <b>355°</b>	Rwy Idg TDZE Apt Elev	<b>9000</b> <b>480</b> <b>542</b>
--	------------------------	-----------------------------	---

# RNAV (GPS) Y RWY 36R

AUSTIN-BERGSTROM INTL (AUS)

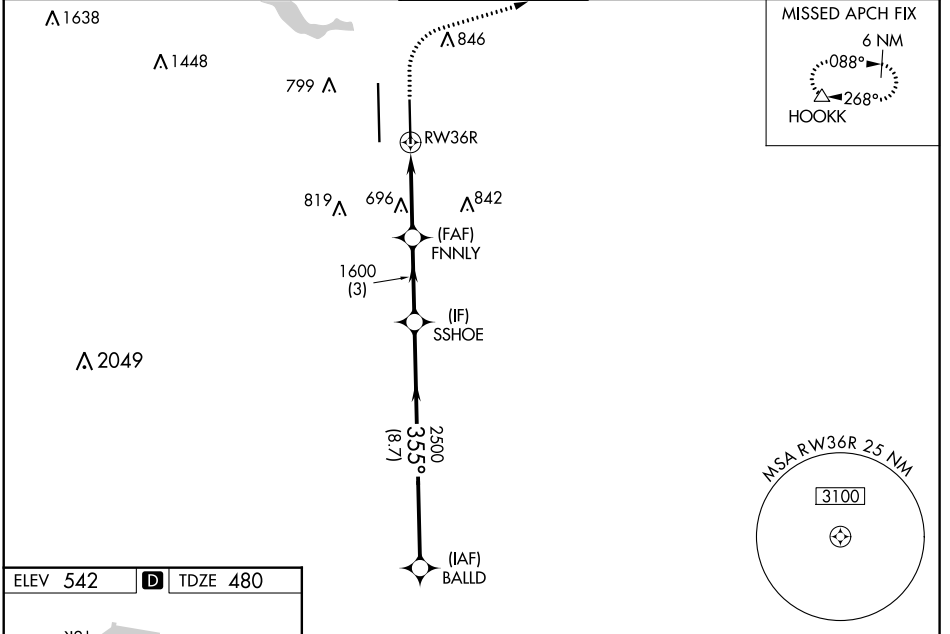
**RNP APCH.**

Simultaneous approach authorized. LNAV procedure NA during simultaneous operations. Use of FD or AP required during simultaneous operations. For uncompensated Baro-VNAV systems, LNAV/VNAV NA below -5°C or above 54°C. For inop ALS increase LPV Cat E visibility to RVR 4000, LNAV/VNAV all Cats visibility to 1 3/8 SM and LNAV Cat C/D/E visibility to 1 3/8 SM.

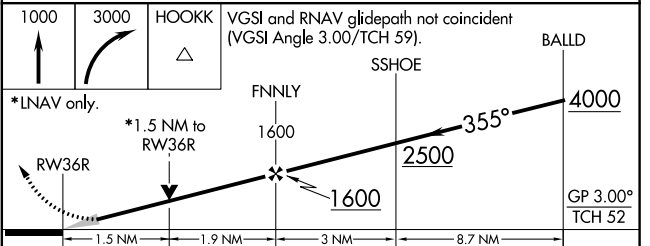
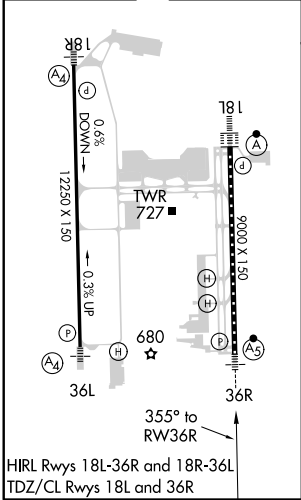
**MALS R**

MISSED APPROACH: Climb to 1000 then climbing right turn to 3000 direct HOOKK and hold.

D-ATIS <b>124.4</b>	AUSTIN APP CON <b>127.225 317.65</b> (EAST) <b>120.875 270.25</b> (SOUTH) <b>119.0 370.85</b> (WEST)	AUSTIN TOWER <b>121.0 281.5</b>	GND CON <b>121.9 348.6</b>	CLNC DEL <b>125.5 263.0</b>	CPDLC
------------------------	---	------------------------------------	-------------------------------	--------------------------------	-------



ELEV 542	<b>D</b>	TDZE 480
----------	----------	----------



CATEGORY	A	B	C	D	E
LPV DA	680/18 200 (200-1/2)				
LNAV/VNAV DA	970/50 490 (500-1)				
LNAV MDA	1000/24	520 (500-1/2)	1000/55 520 (500-1)		
<b>C</b> CIRCLING	1040-1 498 (500-1)	1100-1 558 (600-1)	1200-1 3/4 658 (700-1 3/4)	1200-2 658 (700-2)	1520-3 978 (1000-3)

SC-3, 16 JUN 2022 to 14 JUL 2022

SC-3, 16 JUN 2022 to 14 JUL 2022