

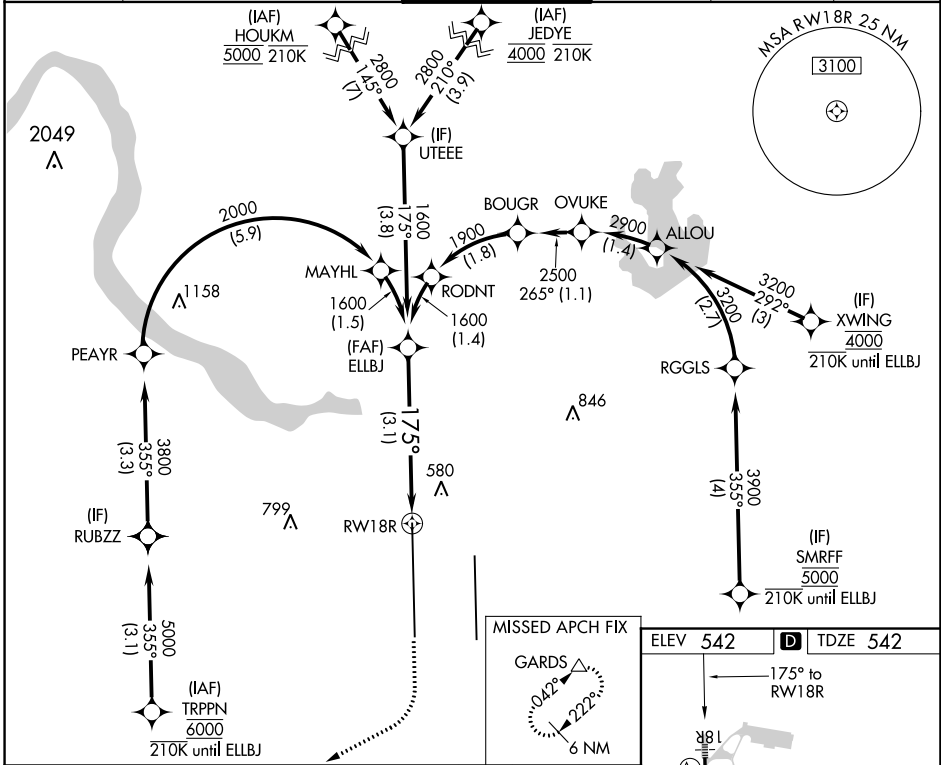
RNAV (RNP) Z RWY 18R

AUSTIN-BERGSTROM INTL (AUS)

APP CRS	Rwy Idg	12250
175°	TDZE	542
	Apt Elev	542

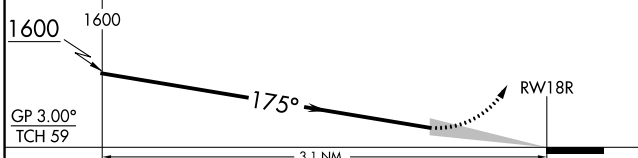
RNP AR APCH-GPS. RADAR required.		MALS	MISSED APPROACH: Climb to 1000 then climbing right turn to 3500 direct GARDS and hold.
Simultaneous approach authorized. For uncompensated Baro-VNAV systems, procedure NA below -5°C or above 54°C.			

D-ATIS	AUSTIN APP CON	AUSTIN TOWER	GND CON	CLNC DEL	CPDLC
124.4	127.225 317.65 (EAST) 120.875 270.25 (SOUTH) 119.0 370.85 (WEST)	121.0 281.5	121.9 348.6	125.5 263.0	



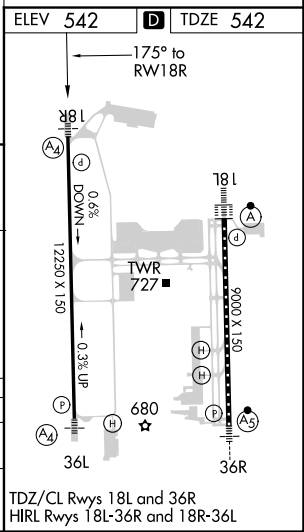
See planview for multiple IF locations.

1000	3500	GARDS



CATEGORY	A	B	C	D
RNP 0.30 DA		883/40	341 (400-3/4)	

AUTHORIZATION REQUIRED



TDZ/CL Rws 18L and 36R
HIRL Rws 18L-36R and 18R-36L

SC-3, 16 JUN 2022 to 14 JUL 2022

SC-3, 16 JUN 2022 to 14 JUL 2022