

# AUSTIN SIX DEPARTURE

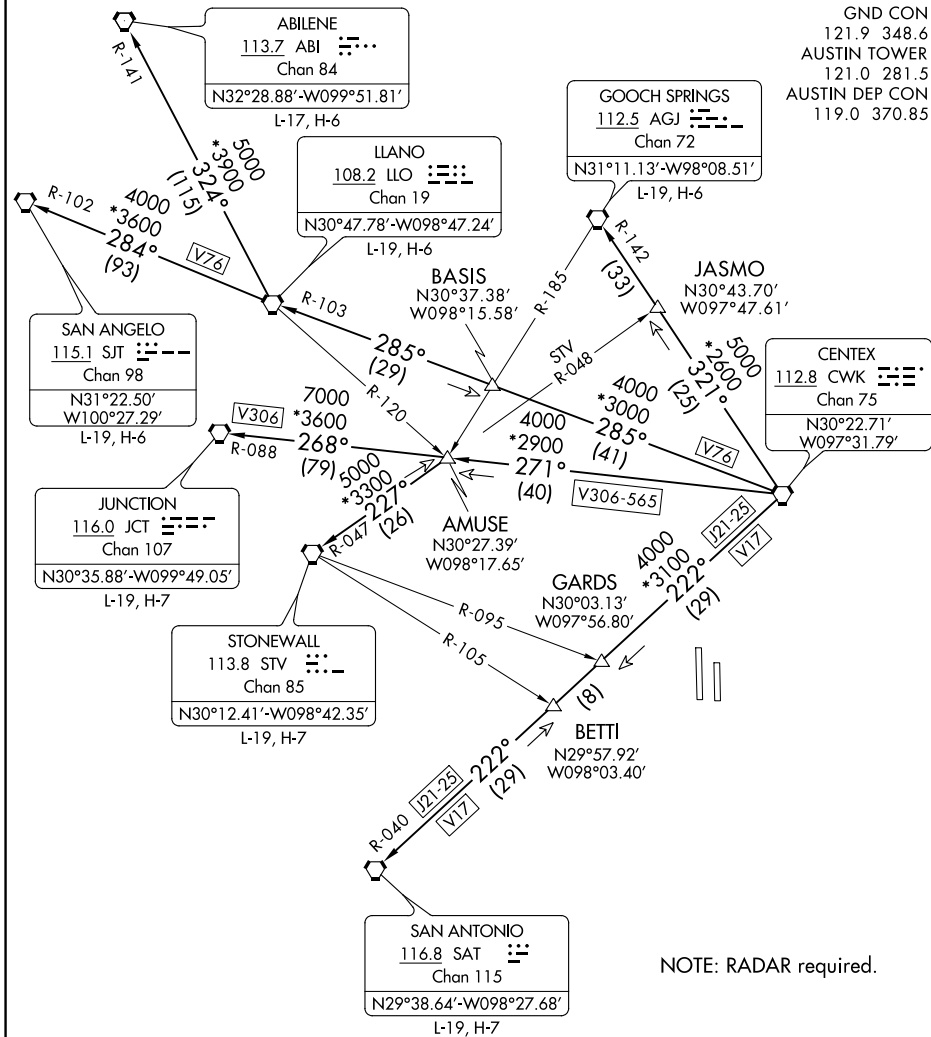
AL-556 (FAA)

AUSTIN-BERGSTROM INTL (AUS)

AUSTIN, TEXAS

**TOP ALTITUDE:  
ASSIGNED BY ATC**

D-ATIS  
124.4  
CLNC DEL  
125.5 263.0  
CPDLC  
GND CON  
121.9 348.6  
AUSTIN TOWER  
121.0 281.5  
AUSTIN DEP CON  
119.0 370.85



SC-3, 16 JUN 2022 to 14 JUL 2022

SC-3, 16 JUN 2022 to 14 JUL 2022

NOTE: RADAR required.

### TAKEOFF MINIMUMS

Rwys 18L/R: Standard.

Rwys 36L/R: Standard with minimum climb of 240' per NM to 2600.

(NARRATIVE ON FOLLOWING PAGE)

NOTE: Chart not to scale.

# AUSTIN SIX DEPARTURE

AUSTIN, TEXAS

AUSTIN-BERGSTROM INTL (AUS)