

LOC I-SBD 109.3	APP CRS 057°	Rwy ldg 10000 TDZE 1103 Apt Elev 1159
---------------------------	------------------------	--

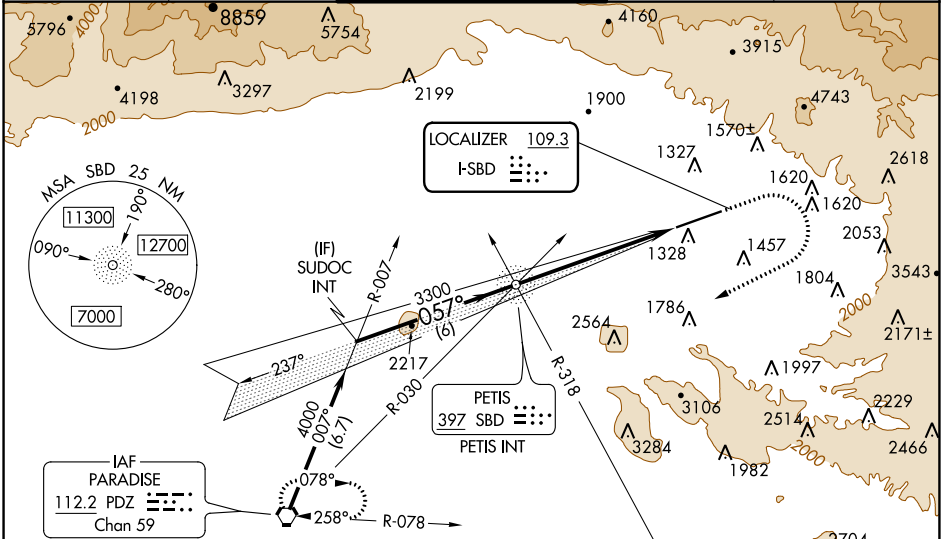
ILS or LOC Z RWY 6

SAN BERNARDINO INTL (SBD)

⚠ Circling NA northwest of Rwy 6-24. When local altimeter setting not received, use Ontario altimeter setting and increase DA to 1426 feet and all visibilities 1/4 SM; increase all MDA 80 feet and S-LOC Cats C/D and Circling Cat C visibility 1/4 SM.

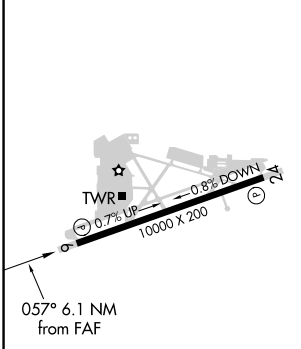
MISSED APPROACH: Climb to 2000 then climbing right turn to 6000 direct PDZ VORTAC and hold, continue climb-in-hold to 6000.
* Missed approach requires minimum climb of 340 feet per NM to 4000; if unable to meet climb gradient, see LOC Y RWY 6.

ATIS 124.175	SOCAL APP CON 127.0 318.2	SAN BERNARDINO TOWER* 119.45 (CTAF) 0	GND CON 121.8	UNICOM 122.975
------------------------	-------------------------------------	---	-------------------------	--------------------------



Procedure NA for arrival on PDZ VORTAC
airway radials 012 CW 030.

ELEV 1159	D	TDZE 1103
-----------	----------	-----------



HIRL Rwy 6-24 **0**
REIL Rwy 6 and 24 **0**

FAF to MAP 6.1 NM

Knots	60	90	120	150	180
Min:Sec	6:06	4:04	3:03	2:26	2:02

SUDOC INT	PETIS NDB/INT	2000	6000	PDZ
		↑	↷	⬡
GS 3.00° TCH 51	4000	057°	3118	3300
	6 NM		6.1 NM	
CATEGORY	A	B	C	D
S-ILS 6*	1353-3/4		250 (200-3/4)	
S-LOC 6*	1740-1	637 (600-1)	1740-1 3/4	637 (600-1 3/4)
C CIRCLING	1740-1	581 (600-1)	1760-1 3/4 601 (700-1 3/4)	2640-3 1481 (1500-3)

SW-3, 16 JUN 2022 to 14 JUL 2022

SW-3, 16 JUN 2022 to 14 JUL 2022