

WAAS CH 99616 W13A	APP CRS 128°	Rwy Idg 7217 TDZE 592 Apt Elev 598
--	------------------------	---

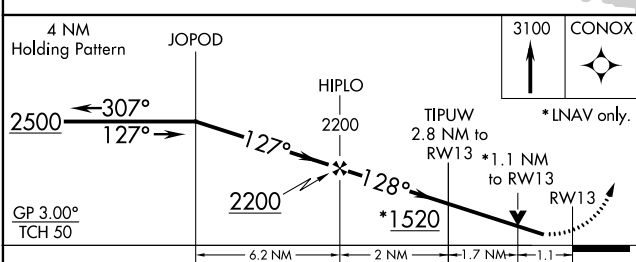
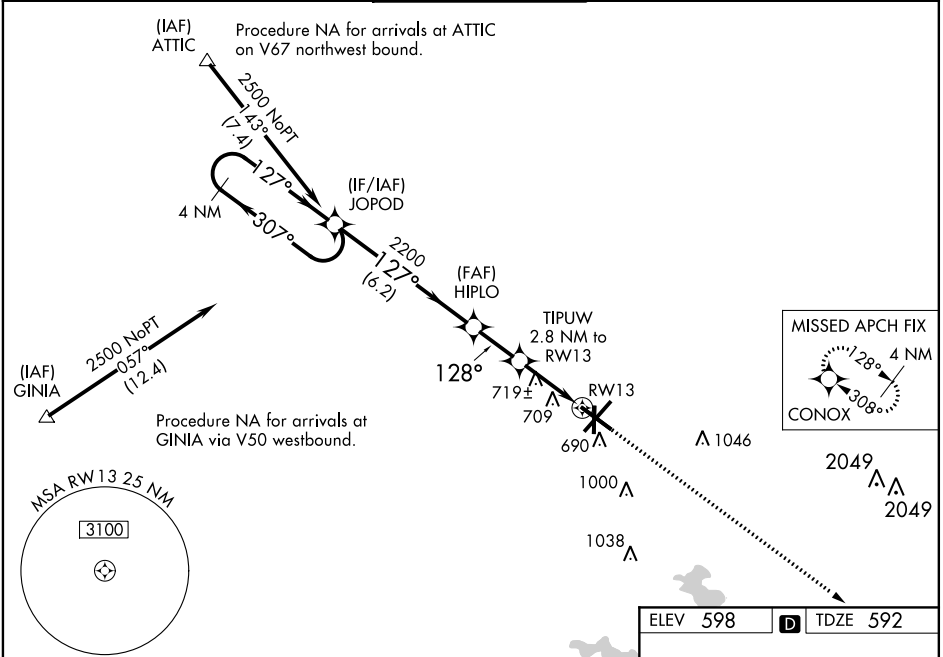
RNAV (GPS) RWY 13

ABRAHAM LINCOLN CAPITAL (SPI)

⚠ For uncompensated Baro-VNAV systems, LNAV/VNAV NA below -16°C (4°F) or above 47°C (116°F). DME/DME RNP-0.3 NA. Visibility reduction by helicopters NA. When local altimeter setting not received, use Lincoln altimeter setting: increase all DA 57 feet and MDA 60 feet, increase LPV and LNAV/VNAV all Cats visibility ¼ SM, and increase LNAV and Circling Cats C and D visibility ¼ SM. Baro-VNAV NA when using Lincoln altimeter setting. VDP NA when using Lincoln altimeter setting.

MISSED APPROACH:
Climb to 3100 direct CONOX and hold.

ATIS 127.65 270.1	SPRINGFIELD APP CON ★ 126.15 323.0	SPRINGFIELD TOWER ★ 121.3 (CTAF) 257.8	GND CON 121.9 348.6	CLNC DEL 121.7	UNICOM 122.95
-----------------------------	--	--	-------------------------------	--------------------------	-------------------------



ELEV 598 TDZE 592

128° to RWY 13

CONOX

*1.1 NM to RWY 13

RWY 13

81

36

TWR 698

3000 4150 800 1150 7400 1150

MIRL Rwy 18-36

REIL Rwy 13

HIRL Rwy 4-22 and 13-31

CATEGORY	A	B	C	D
LPV DA	875-1 283 (300-1)			
LNAV/VNAV DA	1011-1½ 419 (500-1½)			
LNAV MDA	980-1 388 (400-1)		980-1¼ 388 (400-1¼)	
CIRCLING	1040-1 442 (500-1)	1100-1 502 (600-1)	1360-2¼ 762 (800-2¼)	1380-2½ 782 (800-2½)

EC-3, 16 JUN 2022 to 14 JUL 2022

EC-3, 16 JUN 2022 to 14 JUL 2022