

WAAS CH 90523 W21A	APP CRS 208°	Rwy Idg TDZE Apt Elev	5500 3286 3298
--	------------------------	-----------------------------	---

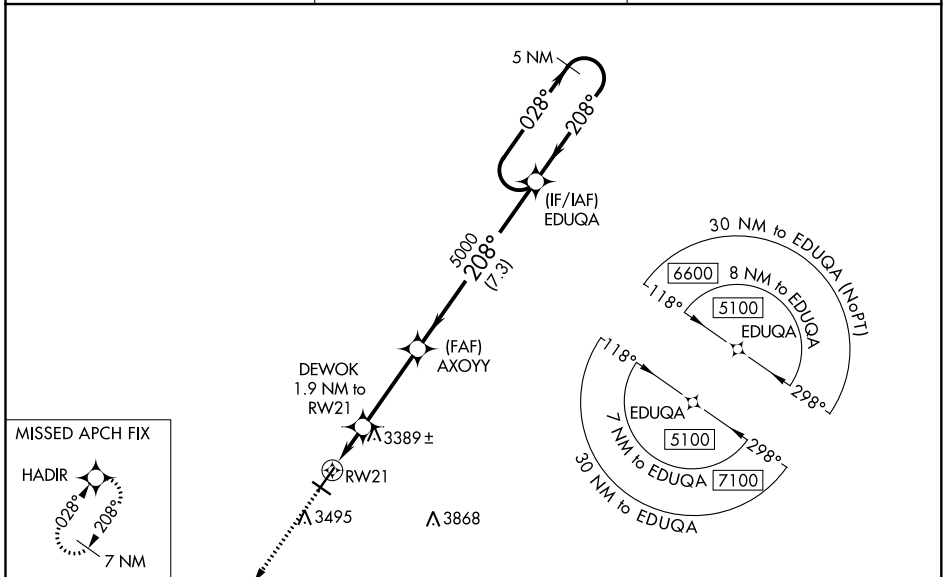
RNAV (GPS) RWY 21

CHADRON MUNI (CDR)

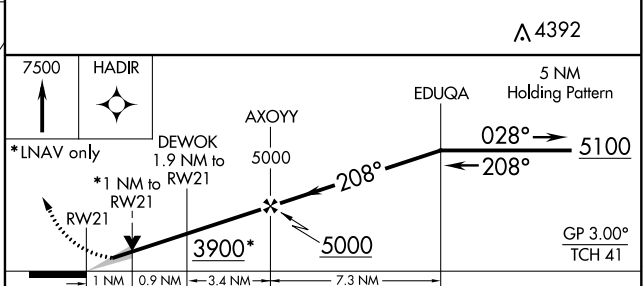
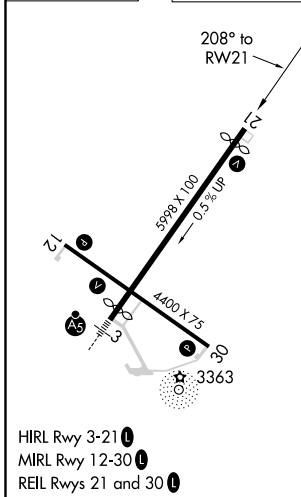
⚠ Baro-VNAV NA when using Pine Ridge altimeter setting. For uncompensated Baro-VNAV systems, LNAV/VNAV NA below -21°C (-5°F) or above 23°C (73°F). DME/DME RNP-0.3 NA. VDP NA with Pine Ridge altimeter setting. When local altimeter setting not received, use Pine Ridge altimeter setting and increase all DA 70 feet and all MDA 80 feet; increase LPV and LNAV/VNAV all Cts visibility ¼ SM, LNAV Cts C and D visibility ⅓ SM and Circling Cts C visibility ¼ SM.

MISSED APPROACH: Climb to 7500 direct HADIR and hold, continue climb-in-hold to 7500.

ASOS 118.05	DENVER CENTER 127.95 338.2	UNICOM 122.8 (CTAF) ①
-----------------------	--------------------------------------	--



ELEV 3298	D	TDZE 3286
------------------	----------	------------------



CATEGORY	A	B	C	D
LPV DA		3536-7/8	250 (300-7/8)	
LNAV/VNAV DA		3684-13/8	398 (400-13/8)	
LNAV MDA		3640-1	354 (400-1)	
CIRCLING	3820-1 522 (600-1)	3920-1 622 (700-1)	3920-13/4 622 (700-13/4)	4220-3 922 (1000-3)

NC-2, 16 JUN 2022 to 14 JUL 2022

NC-2, 16 JUN 2022 to 14 JUL 2022