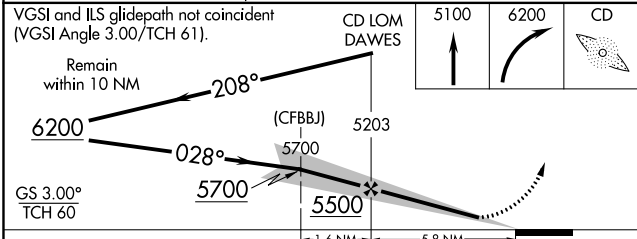
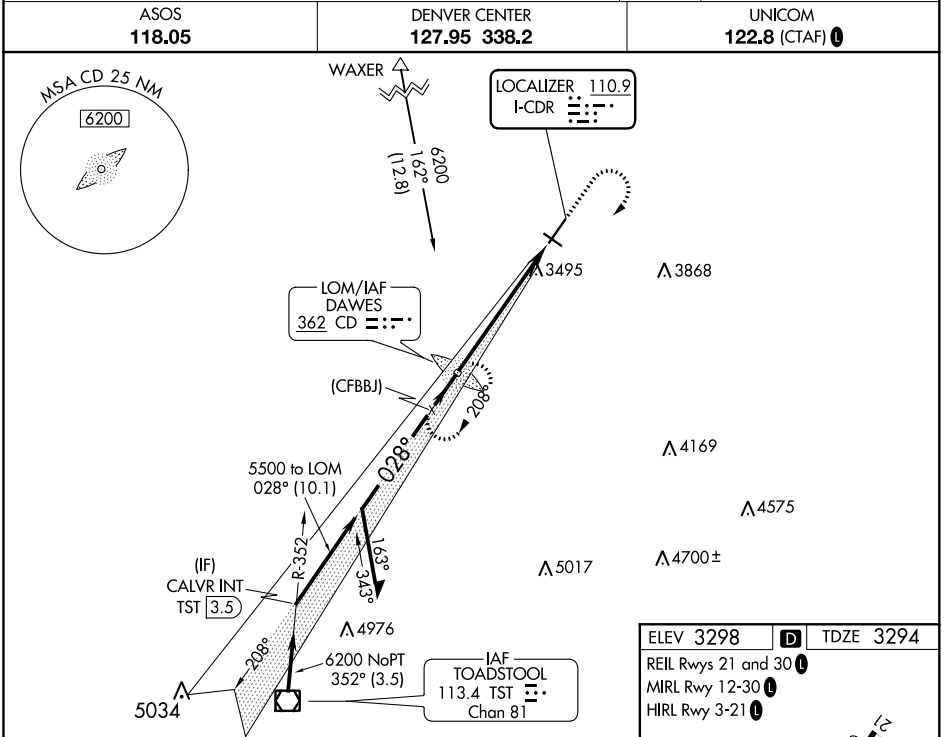


LOC I-CDR 110.9	APP CRS 028°	Rwy ldg 5211 TDZE 3294 Apt Elev 3298
---------------------------	------------------------	--------------------------------------------------------------------------

ILS or LOC RWY 3

CHADRON MUNI (CDR)

<p>ADF required. When local altimeter setting not received, use Pine Ridge altimeter setting and increase all DA 70 feet and all MDA 80 feet; increase S-LOC 3 Cats B/C/D visibility ¼ SM, and Circling Cat C visibility ⅓ SM. For inop MALSR increase S-LOC 3 Cats C and D visibility to 1 ⅓ mile. For inop MALSR when using Pine Ridge altimeter setting increase S-ILS 3 all Cats visibility to ⅔ mile and S-LOC 3 Cats C and D visibility to 2 miles.</p>	<p>MALSR</p>	<p>MISSED APPROACH: Climb to 5100 then climbing right turn to 6200 direct DAWES LOM and hold.</p>
	<p>ASOS 118.05</p>	<p>DENVER CENTER 127.95 338.2</p>



ELEV 3298	D	TDZE 3294
REIL Rwy 21 and 30	0	
MIRL Rwy 12-30	0	
HIRL Rwy 3-21	0	

FAF to MAP 5.8 NM					
Knots	60	90	120	150	180
Min:Sec	5:48	3:52	2:54	2:19	1:56

CATEGORY	A	B	C	D
S-ILS 3	3494-½		200 (200-½)	
S-LOC 3	3960-½ 666 (700-½)		3960-1½ 666 (700-1½)	
CIRCLING	3960-1 662 (700-1)		3960-1⅞ 4220-3 662 (700-1⅞) 922 (1000-3)	

NC-2, 16 JUN 2022 to 14 JUL 2022

NC-2, 16 JUN 2022 to 14 JUL 2022