

WICHITA FALLS, TEXAS

RNAV (GPS) RWY 15C

APCH CRS	Rwy Idg 10.003
153°	TDZE 1003
	Arprt Elev 1019

AL-454 [USAF]

SHEPPARD AFB/WICHITA FALLS MUNI (KSPS)

RNP APCH

ALSIF-1

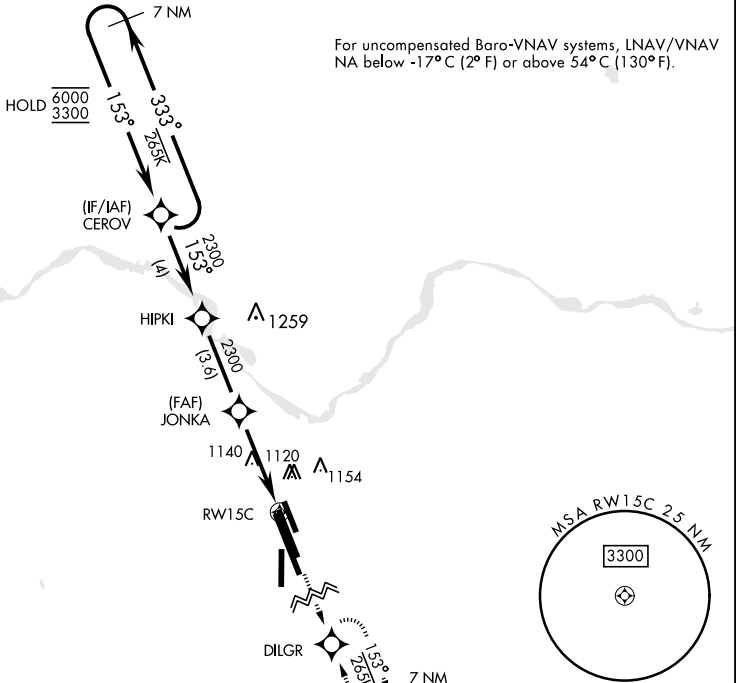
MISSED APPROACH: Climb to 3100 direct DILGR and hold.

▼ * When ALS inop, increase vis to 1½ miles.
 ** When ALS inop, increase CAT AB vis to 1 mile, CAT CDE vis to 1½ miles.

ATIS *	APP CON	TOWER *	GND CON	CLNC DEL	ASR
132.05 269.9	118.2 269.025	119.75 0 279.525 (CTAF)	125.5 289.4	121.2 282.225	

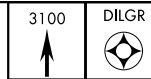
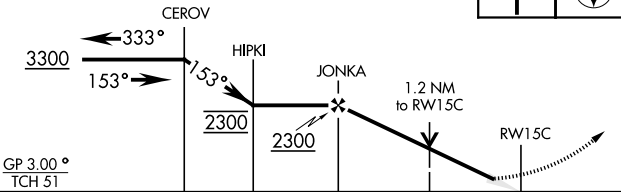
*** Circling NA southwest of Rwy 15R-33L.

For uncompensated Baro-VNAV systems, LNAV/VNAV NA below -17°C (2° F) or above 54°C (130° F).

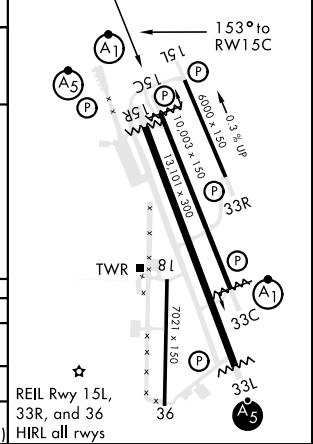


EMERG SAFE ALT 100 NM 4600

VGSI and RNAV glidepath not coincident (VGSI Angle 3.00/TCH 46).



ELEV 1019	TDZE 1003
-----------	-----------



CATEGORY	A	B	C	D	E
LNAV/VNAV DA*	1397-5/8		394	(400-5/8)	
LNAV MDA**	1420-1/2	417 (500-1/2)	1420-3/4	417	(500-3/4)
*** CIRCLING	1440-1	1480-1	1480-1 1/2	2020-3	2080-3
	421 (500-1)	461 (500-1)	461 (500-1 1/2)	1001 (1100-3)	1061 (1100-3)

WICHITA FALLS, TEXAS

33°59'N-98°30'W

SHEPPARD AFB/WICHITA FALLS MUNI (KSPS)

Orig 21MAY20

RNAV (GPS) RWY 15C

SC-2, 16 JUN 2022 to 14 JUL 2022

SC-2, 16 JUN 2022 to 14 JUL 2022