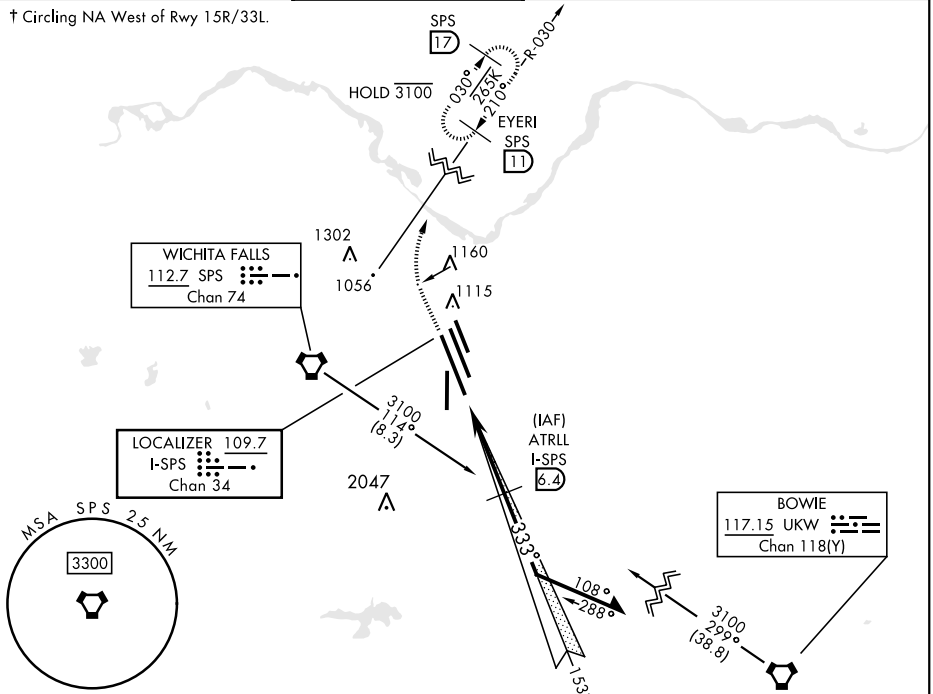


WICHITA FALLS, TEXAS

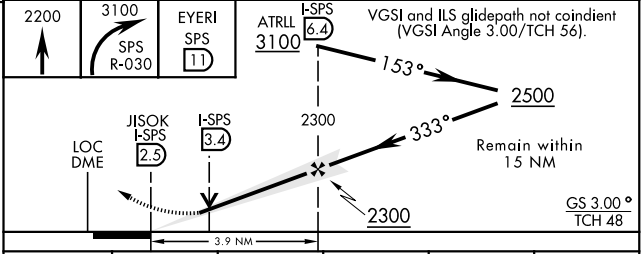
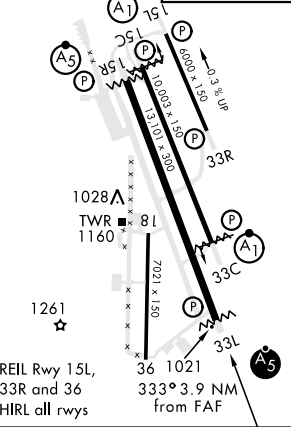
ILS or LOC/DME Y RWY 33L

LOC/DME I-SPS 109.7 Chan 34	APCH CRS 333°	Rwy ldg 33L 13,101 33C 10,003 TDZE 33L 1000 33C 989 Arprt Elev 1019	AL-454 [USAF]	SHEPPARD AFB/ WICHITA FALLS MUNI (KSPS)	
* When ALS inop, increase vis to ¾ mile. ** When ALS inop, increase vis to 1 mile. *** When ALS inop, increase vis to 1 mile.			MALSR A5	ALSF-1 A1	
MISSED APPROACH: Climb to 2200, then climbing right turn to 3100 via SPS VORTAC R-030 to EYERI (SPS R-030/11) and hold.					
ATIS * 132.05 269.9	APP CON 118.2 269.025	TOWER * 119.75 0 279.525 (CTAF)	GND CON 125.5 289.4	CLNC DEL 121.2 282.225	ASR

† Circling NA West of Rwy 15R/33L.



ELEV 1019	TDZE 33L 1000 TDZE 33C 989
------------------	---



CATEGORY	A	B	C	D	E
S-ILS 33L *	1200-½ 200 (200-½)				
S-LOC/ ** DME 33L	1340-½ 340 (400-½)				
SIDESTEP 33C ***	1340-½ 351 (400-½)	1340-⅝ 351 (400-⅝)			
CIRCLING†	1440-1 421 (500-1)	1480-1 461 (500-1)	1480-1½ 461 (500-1½)	2020-3 1001(1100-3)	2080-3 1061(1100-3)

WICHITA FALLS, TEXAS 33°59'N-98°30'W
Amdt 6 16JUL20

SHEPPARD AFB/WICHITA FALLS MUNI (KSPS)

ILS or LOC/DME Y RWY 33L

SC-2, 16 JUN 2022 to 14 JUL 2022

SC-2, 16 JUN 2022 to 14 JUL 2022