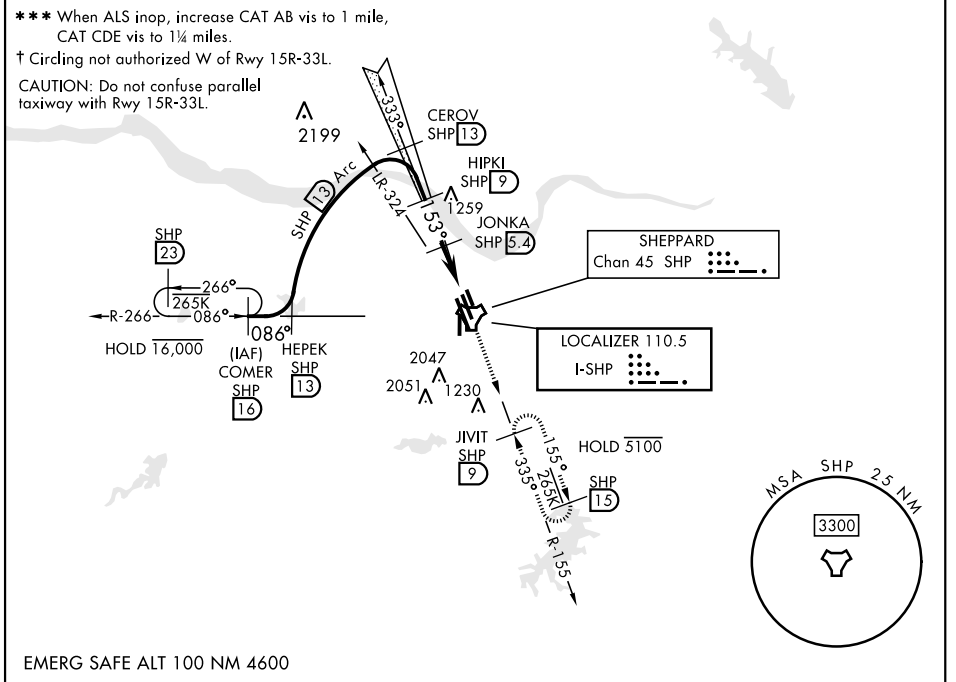


WICHITA FALLS, TEXAS

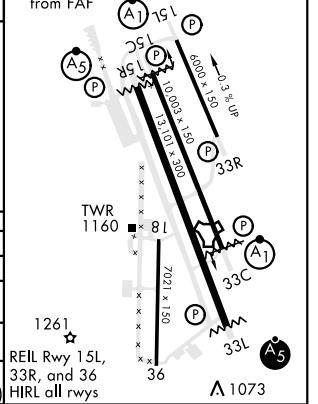
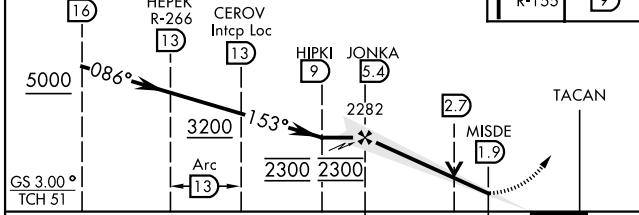
ILS or LOC/DME RWY 15C

LOC I-SHP 110.5	APCH CRS 153°	Rwy Ldg 15C 10,003 15R 13,101 THRE 15C 1003 15R 998 Arprt Elev 1019	AL-454 [USAF]	SHEPPARD AFB/ WICHITA FALLS MUNI (KSPS)
DME required.			ALSF-1 Rwy 15C (A1)	MALSR Rwy 15R (A5)
* When ALS inop, increase all CATs vis to ¾ mile. ** When ALS inop, increase CAT AB vis to 1 mile, CAT CDE vis to 1½ miles.			MISSED APPROACH: Climb and maintain 3100, intercept SHP TACAN R-155 to SHP R-155/9 DME (JIVIT) and hold.	

ATIS ★ 132.05 269.9	APP CON 118.2 269.025	TOWER ★ 119.75 279.525 (CTAF)	GND CON 125.5 289.4	CLNC DEL 121.2 282.225	ASR
-------------------------------	---------------------------------	---	-------------------------------	----------------------------------	-----



(IAF) COMER R-266	VGS1 and descent angle not coincident	3100 SHP R-155	JIVIT SHP 9	ELEV 1019	THRE 15C 1003 THRE 15R 998
-------------------	---------------------------------------	----------------	-------------	-----------	-------------------------------



CATEGORY	A	B	C	D	E
S-ILS 15C *	1203-½		200	(200-½)	
S-LOC/ DME 15C **	1420-½	417 (500-½)	1420-¾	417	(500-¾)
SIDESTEP 15R ***	1420-½	422 (500-½)	1420-¾	422	(500-¾)
CIRCLING†	1440-1 421 (500-1)	1480-1 461 (500-1)	1480-1½ 461 (500-1½)	2020-3 1001 (1100-3)	2080-3 1061 (1100-3)

WICHITA FALLS, TEXAS 33°59'N-98°30'W
 Amdt 8 09JAN14

SHEPPARD AFB/WICHITA FALLS MUNI (KSPS)
ILS or LOC/DME RWY 15C

SC-2, 16 JUN 2022 to 14 JUL 2022

SC-2, 16 JUN 2022 to 14 JUL 2022