

# TACAN Y RWY 14

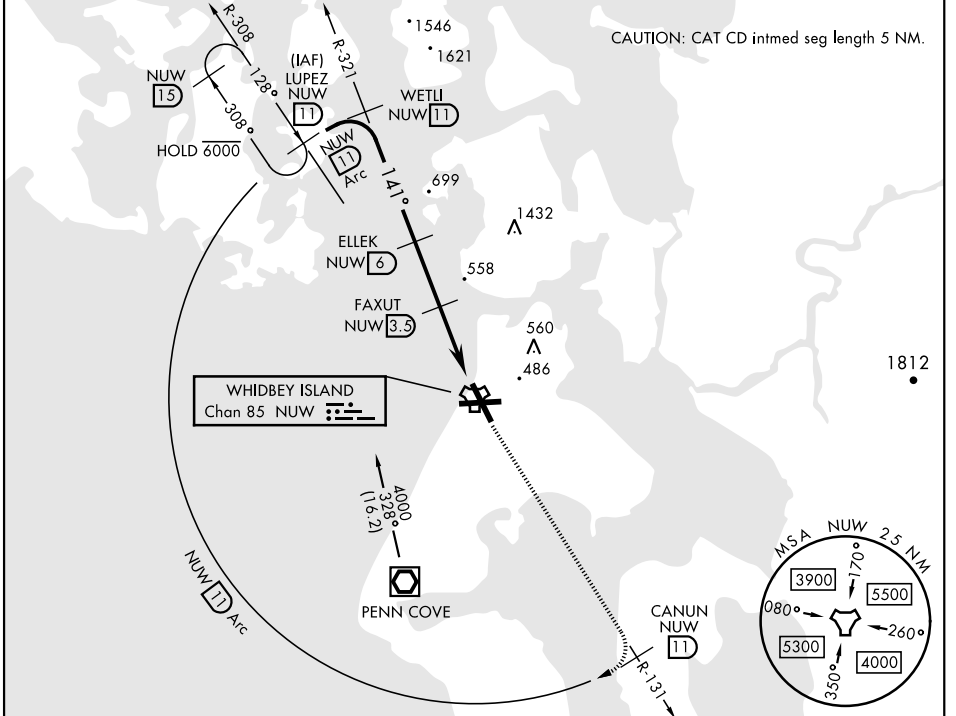
TACAN NUW Chan <b>85</b>	APCH CRS <b>141°</b>	Rwy Idg TDZE <b>39</b> Arprt Elev <b>47</b>	AL-451 [USN]	WHIDBEY ISLAND NAS (AULT FLD) (KNUW)
-----------------------------	-------------------------	---	--------------	--------------------------------------

▼ \* When ALS inop, increase CAT AB vis to 1 mile, CAT CD to 1½ miles.

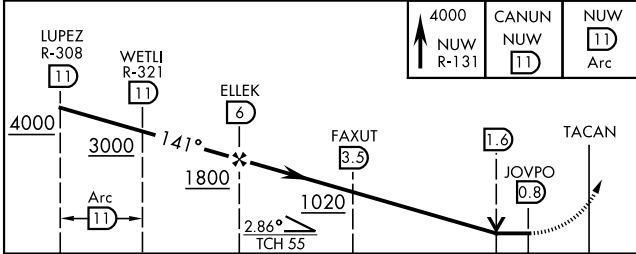


MISSED APPROACH: Climb to 4000 via NUW TACAN R-131 to CANUN, then arc SW of NUW via 11 DME Arc to LUPEZ and hold.

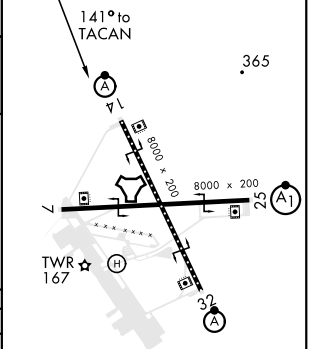
ATIS <b>134.15 281.5</b>	WHIDBEY APP CON <b>120.7 270.8 (E)</b> <b>118.2 285.65 (W)</b>	WHIDBEY TOWER <b>127.9 340.2</b>	GND CON <b>121.75 336.4</b>	CLNC DEL <b>135.1 379.9</b>	ASR/PAR
-----------------------------	--	-------------------------------------	--------------------------------	--------------------------------	---------



EMERG SAFE ALT 100 NM 16,500



ELEV <b>47</b>	TDZE <b>39</b>
----------------	----------------



CATEGORY	A	B	C	D
S-14*	480-½ 441 (500-½)		480-¾ 441 (500-¾)	
CIRCLING	760-1 713 (800-1)	800-1 753 (800-1)	900-2½ 853 (900-2½)	900-2¾ 853 (900-2¾)

HIRL Rwy 7-25, 14-32  
TDZL/CL Rwy 14

# TACAN Y RWY 14

NW-1, 16 JUN 2022 to 14 JUL 2022

NW-1, 16 JUN 2022 to 14 JUL 2022