

NASWI TWO (OBSTACLE) DEPARTURE

WHIDBEY ISLAND NAS (AULT FLD) (KNUW)

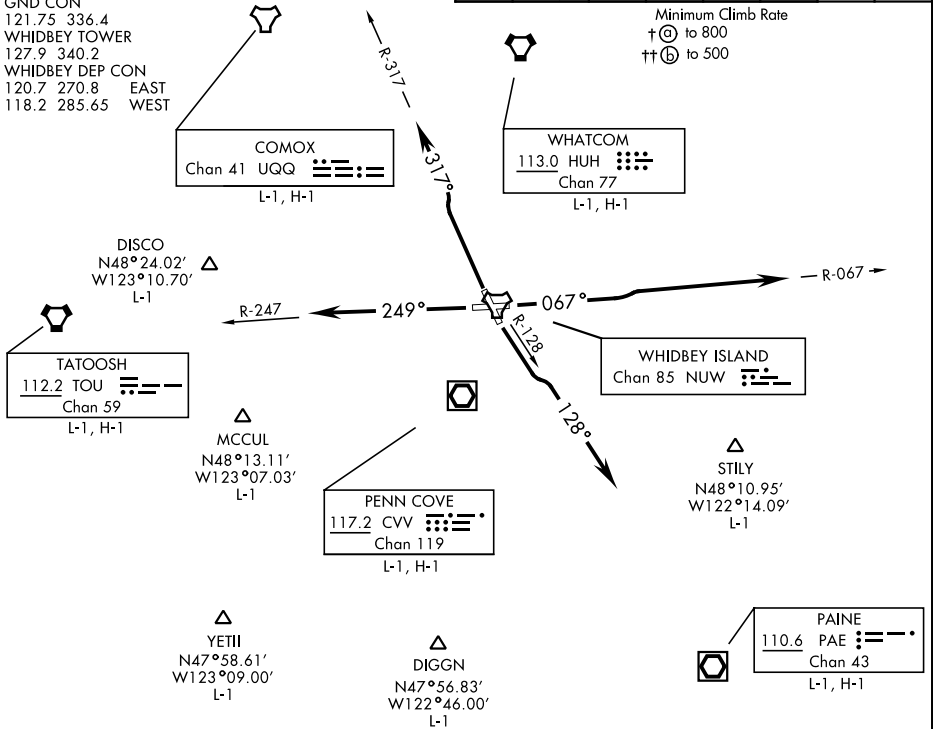
OAK HARBOR, WASHINGTON

ATIS 134.15 281.5
 CLNC DEL
 135.1 379.9
 GND CON
 121.75 336.4
 WHIDBEY TOWER
 127.9 340.2
 WHIDBEY DEP CON
 120.7 270.8 EAST
 118.2 285.65 WEST

SL-451 [USN]

Rwy	Knots	60	120	180	240	300	360
7 (a)	V/V(fpm)	410	820	1230	1640	2050	2460
7 (b)	V/V(fpm)	275	550	825	1100	1375	1650

Minimum Climb Rate
 † (a) to 800
 †† (b) to 500



NOTE: Chart not to scale

DEPARTURE ROUTE DESCRIPTION

MILITARY DEPARTURE PROCEDURE:

- †RWY 7: Climbing left turn to 2000, intercept NUW TACAN R-067, then radar vectors to assigned route.
- RWY 14: Climbing left turn to 2000, intercept NUW TACAN R-128, then radar vectors to assigned route.
- RWY 25: Climb to 2000, intercept NUW TACAN R-247, then radar vectors to assigned route.
- RWY 32: Climb to 2000 via R-317, then radar vectors to assigned route.

All RWYS: If control instructions are not received by 10 DME of NUW TACAN, climb to 3000, intercept the NUW 11 DME ARC to join assigned route.

CIVIL DEPARTURE PROCEDURE:

- ††RWY 7: Climb to 2000 via heading 067°, then radar vectors to assigned route.
- RWY 14: Climbing left turn to 2000 via heading 128°, then radar vectors to assigned route.
- RWY 25: Climb to 2000 via heading 249°, then radar vectors to assigned route.
- RWY 32: Climb to 2000 via heading 317°, then radar vectors to assigned route.

All RWYS: If control instructions are not received by 10 DME of NUW TACAN, climb to 3000, proceed direct CVV VOR/DME to join assigned route.

NASWI TWO (OBSTACLE) DEPARTURE

Amdt 1 21MAY20

OAK HARBOR, WASHINGTON
 WHIDBEY ISLAND NAS (AULT FLD) (KNUW)

NW-1, 16 JUN 2022 to 14 JUL 2022

NW-1, 16 JUN 2022 to 14 JUL 2022