

OAK HARBOR, WASHINGTON

# HI-TACAN Z RWY 14

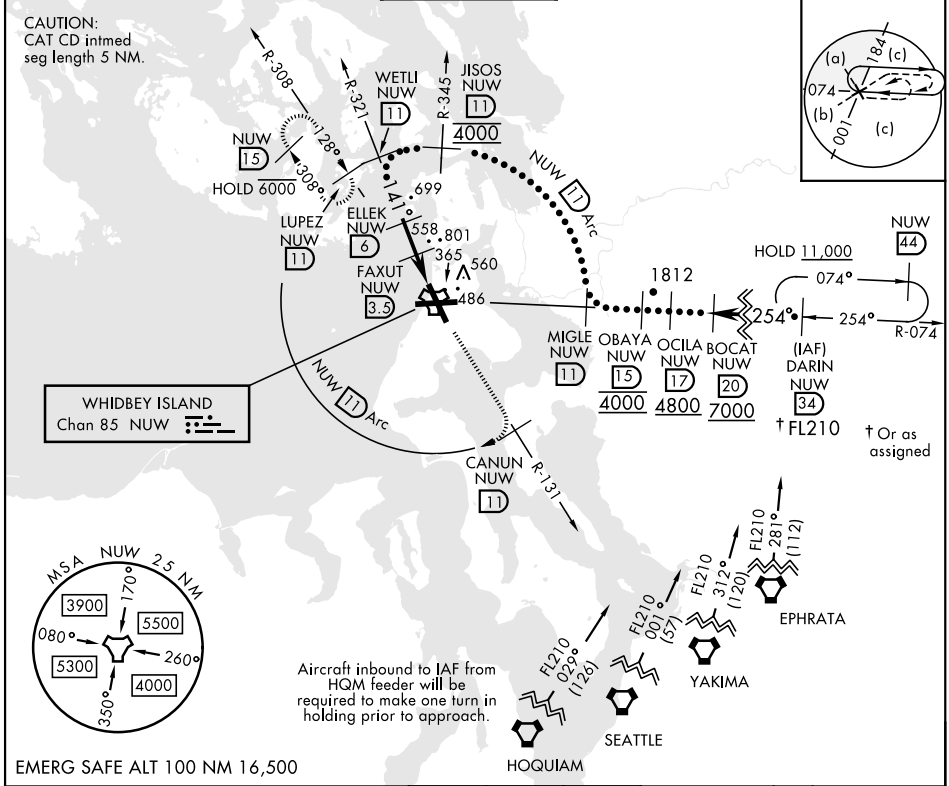
TACAN NUW Chan <b>85</b>	APCH CRS <b>141°</b>	Rwy ldg TDZE <b>8000</b> Arpt Elev <b>39</b> <b>47</b>	AL-451 [USN]	WHIDBEY ISLAND NAS (AULT FLD) (KNUW)
--------------------------	----------------------	--	--------------	--------------------------------------

\* When ALS inop, increase vis to 1 3/8 miles.

ALS-F-2

MISSED APPROACH: Climb to 4000 via NUW TACAN R-131 to CANUN, then arc SW of NUW TACAN via 11 DME Arc to LUPEZ and hold.

ATIS <b>134.15 281.5</b>	WHIDBEY APP CON <b>120.7 270.8</b> (E) <b>118.2 285.65</b> (W)	WHIDBEY TOWER <b>127.9 340.2</b>	GND CON <b>121.75 336.4</b>	CLNC DEL <b>135.1 379.9</b>	ASR/PAR
--------------------------	---	----------------------------------	-----------------------------	-----------------------------	---------



	WETLI R-321 (11)	ELLEK (6)	FAXUT (3.5)	TACAN	4000 NUW R-131	CANUN NUW (11)	NUW (11) Arc	ELEV 47	TDZE 39
	3000	1800	1020					141° to TACAN	
			2.5 NM	2.7 NM				8000 x 200	
CATEGORY	C	D	E					TWR 167	
S-14*	480-7/8	441	(500-7/8)						
CIRCLING	900-2 1/2 853 (900-2 1/2)	900-2 3/4 853 (900-2 3/4)	1200-3 1153 (1200-3)					HIRL Rwy 7-25, 14-32 TDZL/CL Rwy 14	

OAK HARBOR, WASHINGTON

48°21'N-122°39'W

WHIDBEY ISLAND NAS (AULT FLD) (KNUW)

Amdt 3 07OCT21

# HI-TACAN Z RWY 14

NW-1, 16 JUN 2022 to 14 JUL 2022

NW-1, 16 JUN 2022 to 14 JUL 2022