

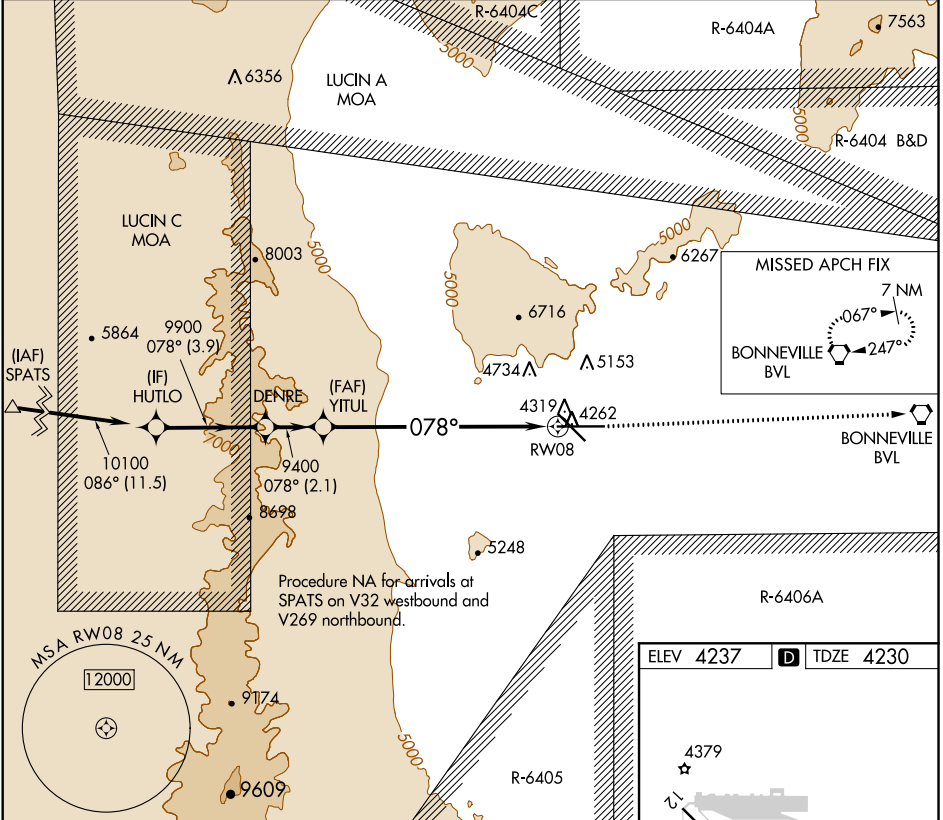
WAAS CH <b>42523</b> <b>W08A</b>	APP CRS <b>078°</b>	Rwy Idg TDZE Apt Elev	<b>10002</b> <b>4230</b> <b>4237</b>
--	------------------------	-----------------------------	--

# RNAV (GPS) RWY 8

WENDOVER (ENV)

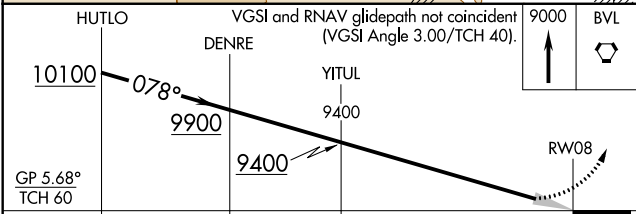
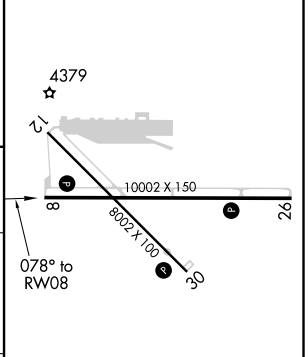
NA -13°C	Baro-VNAV NA. DME/DME RNP-0.3 NA.	MISSED APPROACH: Climb to 9000 direct BVL VORTAC and hold, continue climb-in-hold to 9000.
-------------	-----------------------------------	--

AWOS-3PT <b>120.55</b>	SALT LAKE CENTER <b>128.55 269.175</b>	UNICOM <b>122.8 (CTAF)</b>
---------------------------	---	-------------------------------



Procedure NA for arrivals at SPATS on V32 westbound and V269 northbound.

ELEV 4237	TDZE 4230
-----------	-----------



CATEGORY	A	B	C	D
LPV DA	4560-1 330 (400-1)		NA	
LNAV/VNAV DA	4581-1 351 (400-1)		NA	

REIL Rwy 8, 12, 26 and 30   
MIRL Rwy 8-26 and 12-30

SW-4, 16 JUN 2022 to 14 JUL 2022

SW-4, 16 JUN 2022 to 14 JUL 2022