

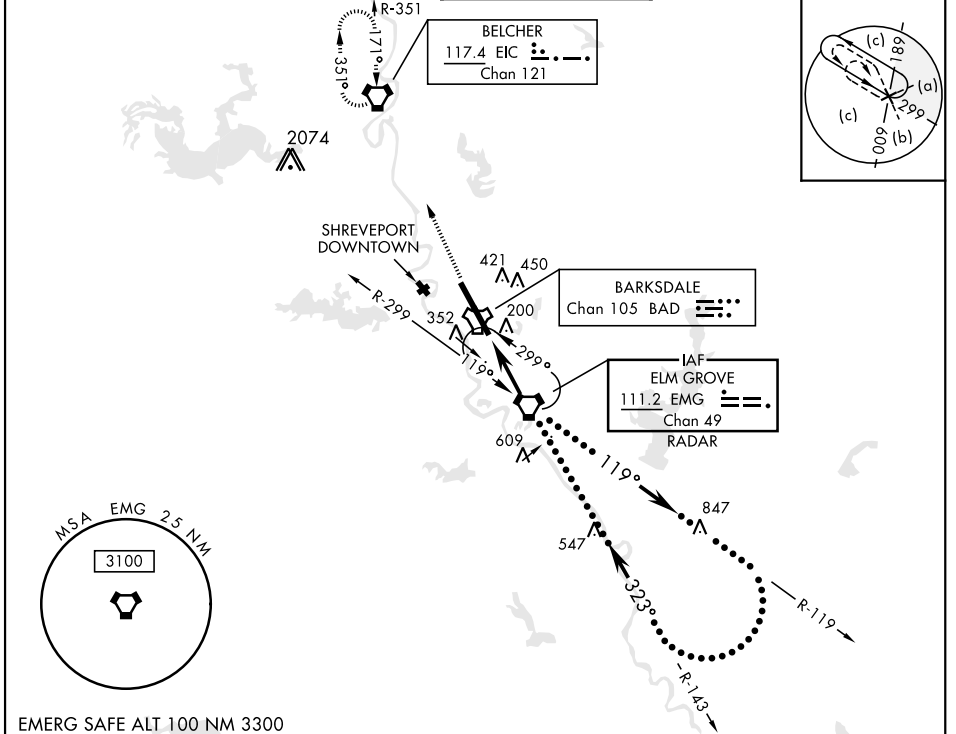
BOSSIER CITY, LOUISIANA

HI-VOR/DME Z RWY 33

VORTAC EMG 111.2 Chan 49	APCH CRS 323°	Rwy Idg 11,758 THRE: 161 Arpt Elev 165	AL-391 [USAF]	BARKSDALE AFB (KBAD)
--	-------------------------	---	---------------	----------------------

DME or RADAR required.	ALSF-1 	MISSED APPROACH: Climb to 3100 direct to EIC VORTAC and hold.
* When ALS inop, increase CAT CDE vis to 1 3/8 miles. ** Circling not authorized W of Rwy.		

ATIS 307.025	SHREVEPORT APP CON 320°-152° 123.75 360.725 153°-319° 119.9 335.55	TOWER 128.25 278.3	GND CON 121.8 253.5	ASR
------------------------	--	------------------------------	-------------------------------	-----



EMERG SAFE ALT 100 NM 3300

3100 ↑	EIC	ELEV 165	THRE 161
CATEGORY	C	D	E
S-33*	640/50	479 (500-1)	
CIRCLING**	NOT AUTHORIZED	760-2 595 (600-2)	780-2 1/4 615 (700-2 1/4)
		HIRL Rwy 15-33	
FAF to MAP 5.4 NM			
Knots	120	140	160 180 200
Min:Sec	2:42	2:19	2:01 1:48 1:37

BOSSIER CITY, LOUISIANA 32°30'N-93°40'W BARKSDALE AFB (KBAD)

HI-VOR/DME Z RWY 33

SC-4, 16 JUN 2022 to 14 JUL 2022

SC-4, 16 JUN 2022 to 14 JUL 2022

