

# HI-ILS or LOC Y RWY 33

LOC I-BAD <b>109.9</b>	APCH CRS <b>329°</b>	Rwy ldg THRE <b>161</b> Arpt Elev <b>165</b>	AL-391 [USAF]	BARKSDALE AFB (KBAD)
---------------------------	-------------------------	--	---------------	----------------------

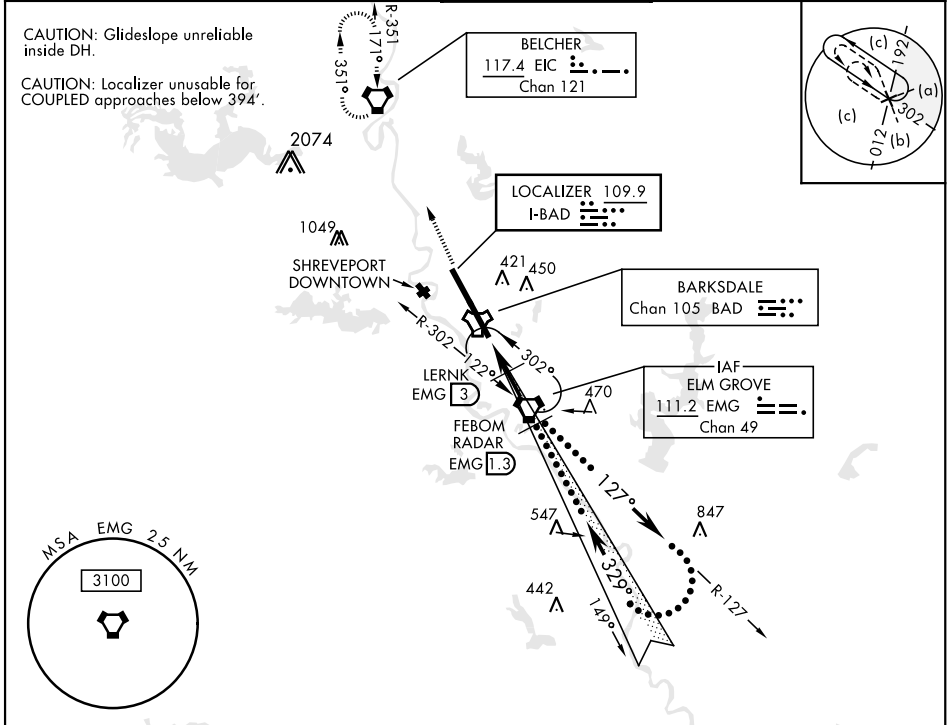
DME or RADAR required.

\* When ALS inop, increase CAT CDE RVR to 40 and vis to 3/4 mile.  
 \*\* When ALS inop, increase CAT CDE RVR to 60 and vis to 1 1/8 miles.  
 \*\*\* Circling not authorized W of Rwy.

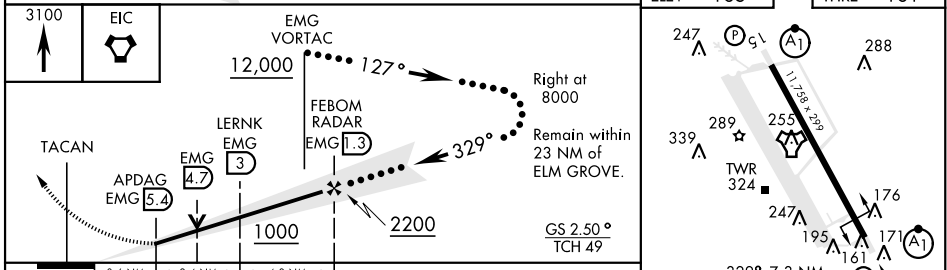
ALSF-1

MISSED APPROACH: Climb to 3100 direct to EIC VORTAC and hold.

ATIS <b>307.025</b>	SHREVEPORT APP CON 320°-152° <b>123.75 360.725</b> 153°-319° <b>119.9 335.55</b>	TOWER <b>128.25 278.3</b>	GND CON <b>121.8 253.5</b>	ASR
------------------------	--	------------------------------	-------------------------------	-----



EMERG SAFE ALT 100 NM 3300



ELEV	165	THRE	161
247	288	289	255
339	176	195	171
TWR 324	161	171	33
HIRL Rwy 15-33			
FAF to MAP 6.7 NM			
Knots	120	140	160 180 200
Min:Sec	3:21	2:52	2:31 2:14 2:01

BOSSIER CITY, LOUISIANA 32°30'N-93°40'W BARKSDALE AFB (KBAD)

# HI-ILS or LOC Y RWY 33

SC-4, 16 JUN 2022 to 14 JUL 2022

SC-4, 16 JUN 2022 to 14 JUL 2022