

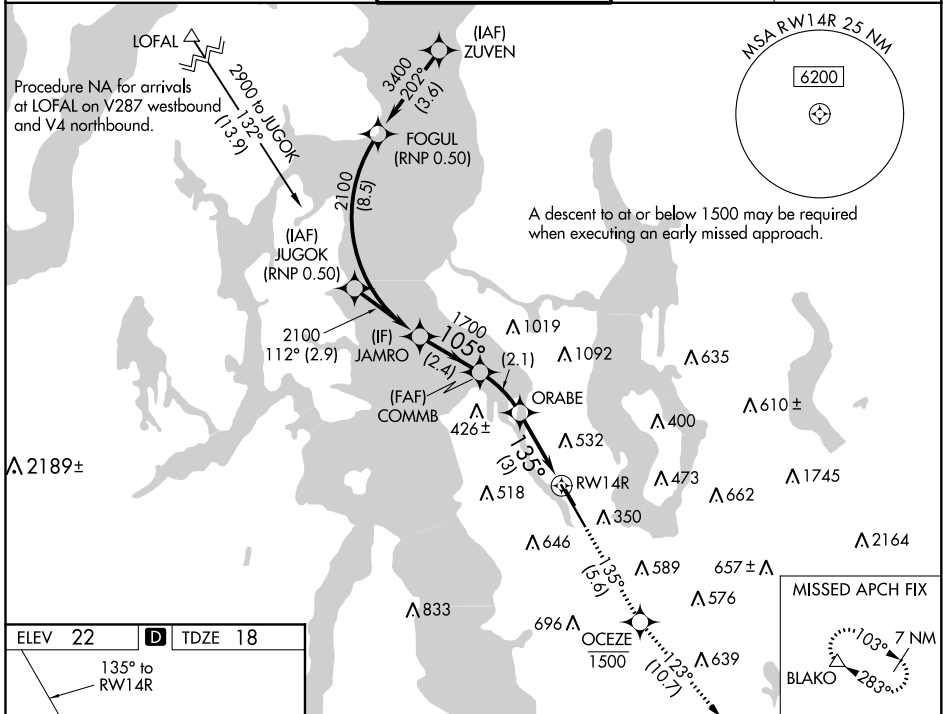
APP CRS	Rwy Idg	<b>9120</b>
<b>135°</b>	TDZE	<b>18</b>
	Apt Elev	<b>22</b>

# RNAV (RNP) Z RWY 14R

BOEING FLD/KING COUNTY INTL (BFI)

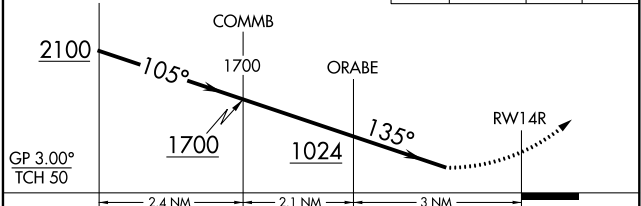
RNP AR APCH-GPS	MALSF	MISSED APPROACH: Climb on track 135° to cross OCEZE at or below 1500 then climb to 6400 on track 123° to BLAKO and hold, continue climb-in-hold to 6400.
<p>▼ Inop table does not apply to RNP 0.30 DA. For inop ALS, increase RNP 0.15 DA Cat D visibility to 1¼ SM. For uncompensated Baro-VNAV systems, LNAV/VNAV NA below -6°C or above 54°C.</p>		

ATIS	SEATTLE APP CON	BOEING TOWER	GND CON	CLNC DEL
<b>127.75</b>	<b>119.2 284.7</b>	<b>120.6 257.8</b>	<b>121.9</b>	<b>132.4</b>



VGSI and RNAV glidepath not coincident. (VGSI Angle 3.00/TCH 55).

OCEZE	6400	BLAKO
I-BFI 135° 1500	↑	↑
7 NM		



CATEGORY	A	B	C	D
RNP 0.15 DA		542-1½	524 (600-1½)	
RNP 0.30 DA		742-2½	724 (800-2½)	

## AUTHORIZATION REQUIRED

MIRL Rwy 14L-32R  
HIRL Rwy 14R-32L  
REIL Rwy 14L, 32L and 32R

NW-1, 16 JUN 2022 to 14 JUL 2022

NW-1, 16 JUN 2022 to 14 JUL 2022