

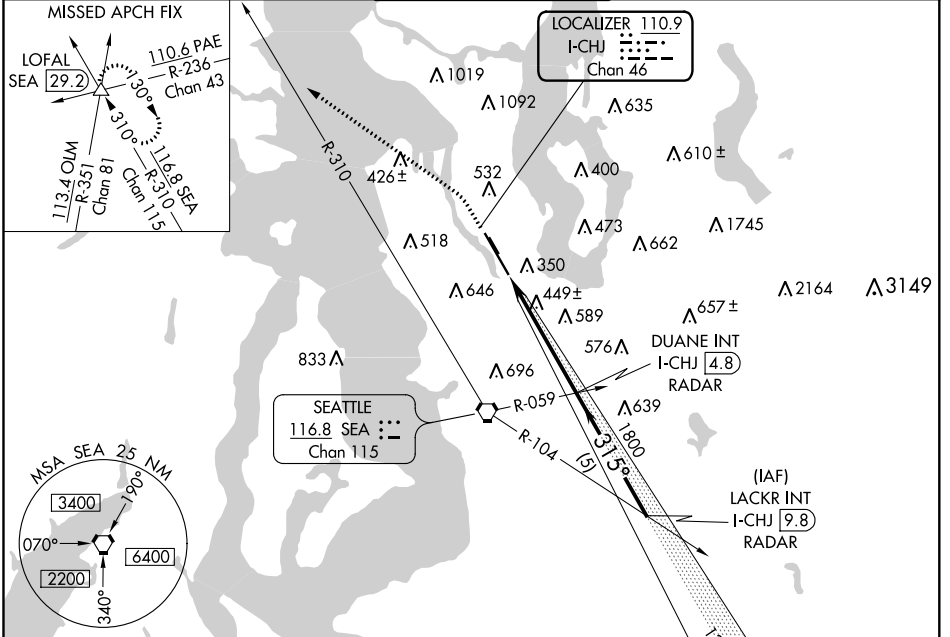
LOC/DME I-CHJ 110.9 Chan 46	APP CRS 315°	Rwy Idg 9120 TDZE 21 Apt Elev 22
--	------------------------	---

ILS or LOC RWY 32L

BOEING FLD/KING COUNTY INTL (BFI)

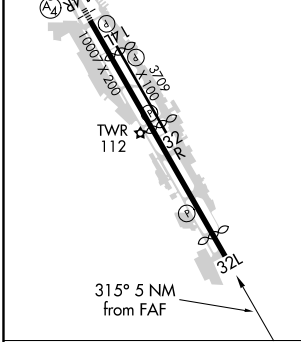
▼ Helicopter visibility reduction below 3/4 SM NA. **▲** MISSED APPROACH: Climb to 700 then climbing left turn to 6000 on heading 290° and SEA R-310 to LOFAL INT/SEA 29.2 DME and hold, continue climb-in-hold to 6000.

ATIS 127.75	SEATTLE APP CON 119.2 284.7	BOEING TOWER 120.6 257.8	GND CON 121.9	CLNC DEL 132.4
-----------------------	---------------------------------------	------------------------------------	-------------------------	--------------------------

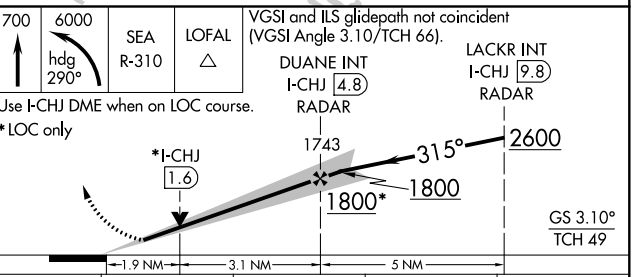


ELEV 22	D TDZE 21
---------	------------------

MIRL Rwy 14L-32R
HIRL Rwy 14R-32L
REIL Rwy 14L, 32L and 32R



RADAR REQUIRED



CATEGORY	A	B	C	D
S-ILS 32L	428-1½ 407 (500-1½)			
S-LOC 32L	700-1 679 (700-1)	700-2 679 (700-2)	700-2½ 679 (700-2½)	700-3 679 (700-3)
C CIRCLING	780-1 758 (800-1)	880-1¼ 858 (900-1¼)	960-2¾ 938 (1000-2¾)	960-3 938 (1000-3)

FAF to MAP 5 NM					
Knots	60	90	120	150	180
Min:Sec	5:00	3:20	2:30	2:00	1:40

NW-1, 16 JUN 2022 to 14 JUL 2022

NW-1, 16 JUN 2022 to 14 JUL 2022