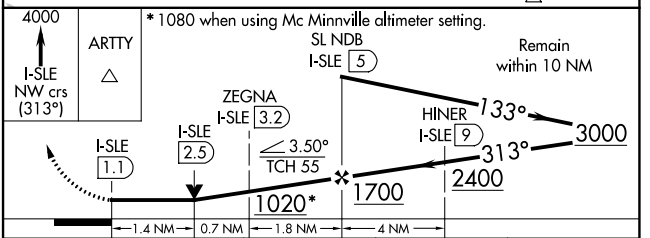
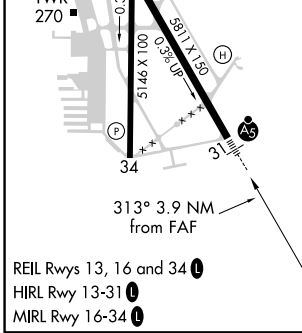
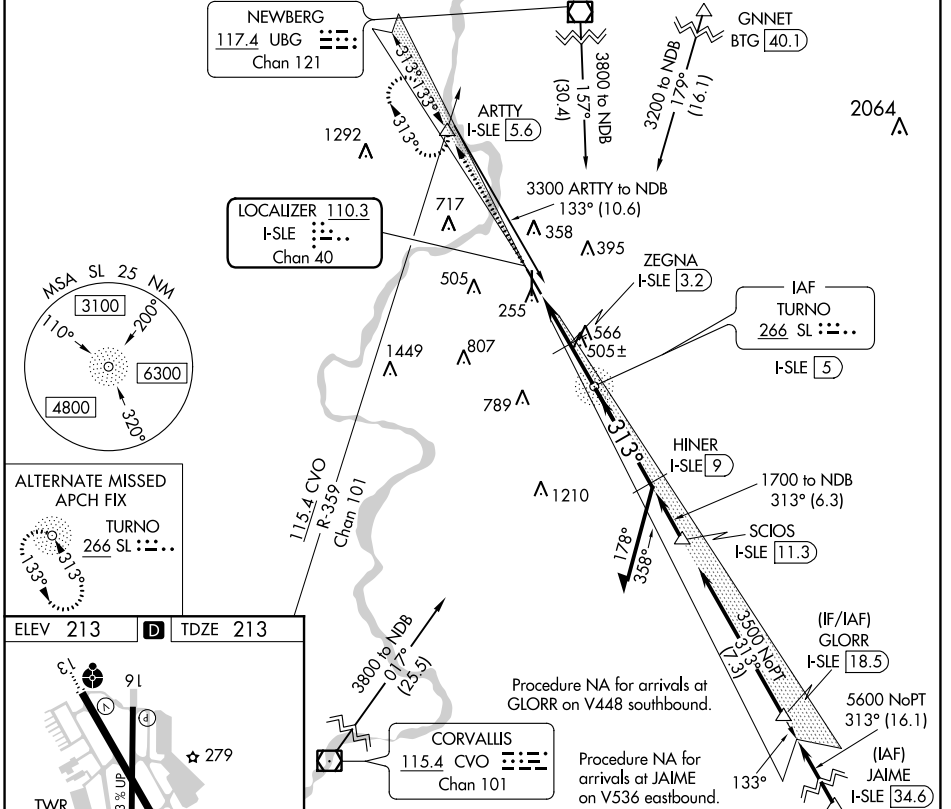


LOC/DME I-SLE <b>110.3</b> Chan 40	APP CRS <b>313°</b>	Rwy Idg <b>5811</b> TDZE <b>213</b> Apt Elev <b>213</b>
--	------------------------	---

# LOC Y RWY 31

MCNARY FLD (SLE)

DME required. RADAR required.		GND CON <b>121.9</b>		UNICOM <b>122.95</b>	
<p>⚠ When local altimeter setting not received, use Mc Minnville altimeter setting and increase all MDAs 60 feet and visibility S-LOC 31 Cat C/D 1/8 SM and Circling Cat C 1/4 SM.</p> <p>⚠ For inop ALS, increase S-LOC 31 Cats C and D visibility to 1/8 SM. For inop ALS when using Mc Minnville altimeter setting, increase S-LOC 31 Cats C and D visibility to 1/4 SM. VDP NA when using Mc Minnville altimeter setting.</p>		<p>MALSRL</p>		<p>MISSED APPROACH: Climb to 4000 on I-SLE Localizer NW course (313°) to ARTTY INT/I-SLE 5.6 DME and hold, continue climb-in-hold to 4000.</p>	
ATIS <b>124.55</b>	SEATTLE CENTER <b>125.8 291.7</b>	SALEM TOWER ★ <b>119.1 (CTAF) 0 257.2</b>			



CATEGORY	A	B	C	D
S-LOC 31	780/24	567 (600-1/2)	780-1/4	567 (600-1/4)
CIRCLING	900-1	960-1	1060-2 1/2	1260-3
	687 (700-1)	747 (800-1)	847 (900-2 1/2)	1047 (1100-3)

NW-1, 16 JUN 2022 to 14 JUL 2022

NW-1, 16 JUN 2022 to 14 JUL 2022