

ILS or LOC Z RWY 31  
MCNARY FLD (SLE)

LOC/DME I-SLE <b>110.3</b> Chan 40	APP CRS <b>313°</b>	Rwy Idg <b>5811</b> TDZE <b>214</b> Apt Elev <b>214</b>
--	------------------------	---

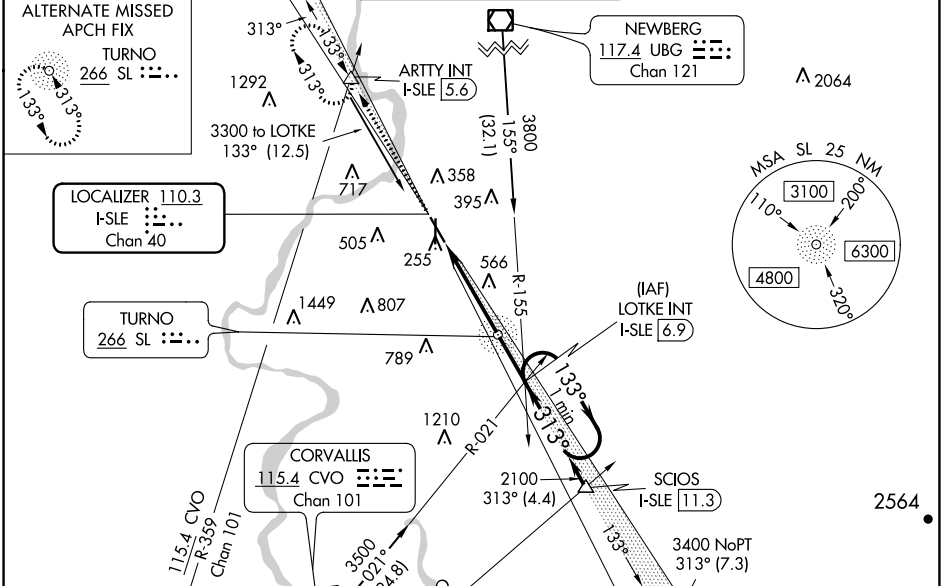
RADAR required for procedure entry at ARTTY.

▼ When local altimeter setting not received, use Mc Minnville altimeter setting: increase DA to 463 feet, and all MDA 60 feet; increase S-LOC 31 Cats C/D visibility to 2 SM and Circling Cat A visibility to 1½ SM. VDP NA when using Mc Minnville altimeter setting. For inop ALS, increase S-LOC 31 Cat C/D visibility to 2½ SM. # RVR 1800 authorized with the use of FD or AP or HUD to DA, NA when using Mc Minnville altimeter setting.

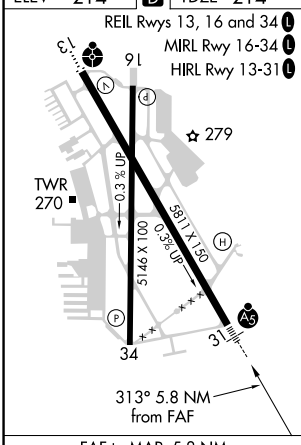
MALSR

MISSED APPROACH: Climb to 4000 on I-SLE Localizer NW course to ARTTY INT/I-SLE 5.6 DME and hold, continue climb-in-hold to 4000.

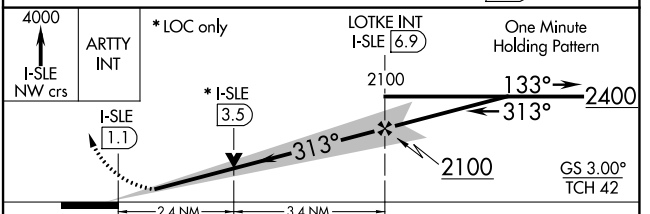
ATIS <b>124.55</b>	SEATTLE CENTER <b>125.8 291.7</b>	SALEM TOWER ★ <b>119.1 (CTAF) 0 257.2</b>	GND CON <b>121.9</b>	UNICOM <b>122.95</b>
-----------------------	--------------------------------------	--	-------------------------	-------------------------



ELEV 214	<b>D</b> TDZE 214
----------	-------------------



FAF to MAP 5.8 NM
Knots: 60 90 120 150 180
Min:Sec: 5:48 3:52 2:54 2:19 1:56



CATEGORY	A	B	C	D
S-ILS 31 #	414/24 200 (200-½)			
S-LOC 31	1020/24 806 (900-½)	1020/40 806 (900-¾)	1020-1⅞ 806 (900-1⅞)	806 (900-1⅞)
<b>C</b> CIRCLING	1020-1 806 (900-1)	1020-1¼ 806 (900-1¼)	1060-2½ 846 (900-2½)	1260-3 1046 (1100-3)

NW-1, 16 JUN 2022 to 14 JUL 2022

NW-1, 16 JUN 2022 to 14 JUL 2022