

# TACAN Y RWY 14

TACAN RIV Chan <b>77</b>	APCH CRS <b>106°</b>	Rwy ldg <b>13,302</b> TDZE <b>1536</b> Arprt Elev <b>1536</b>
-----------------------------	-------------------------	---

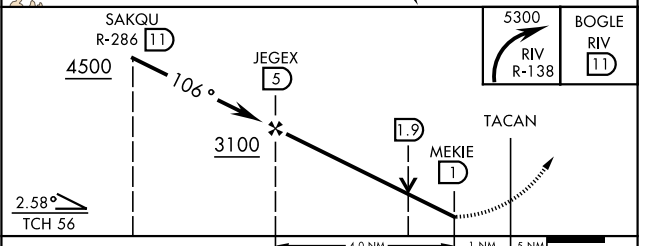
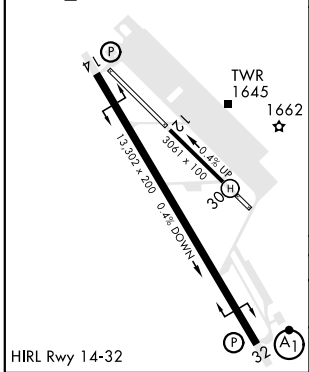
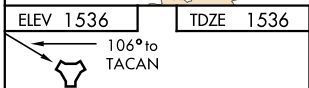
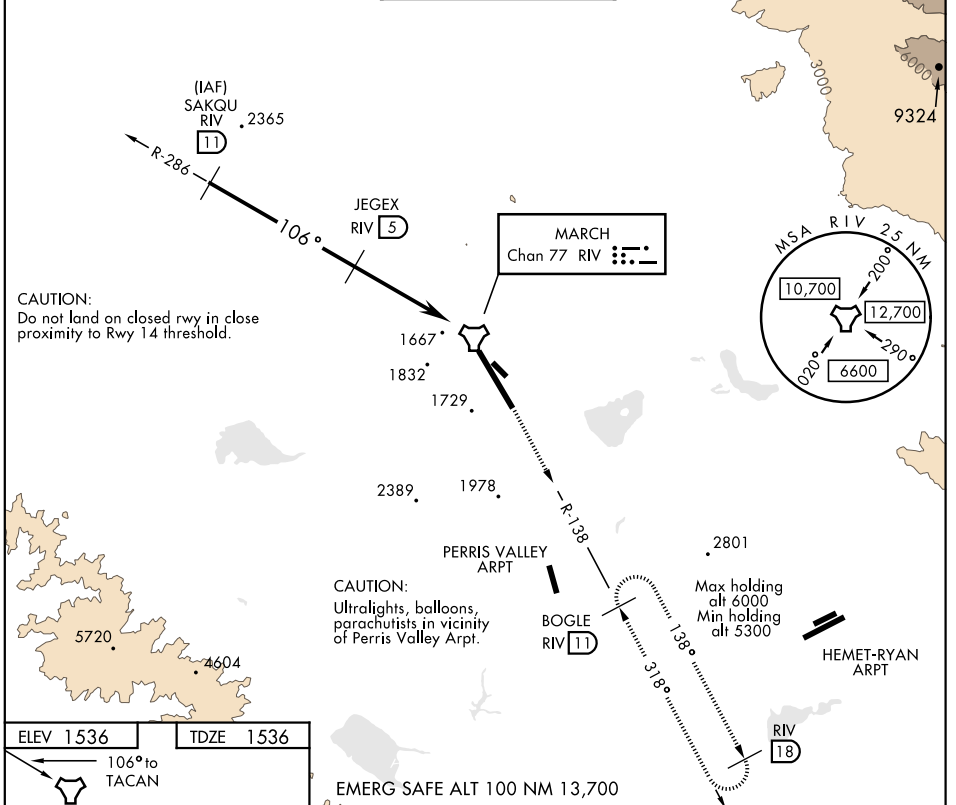
AL-348 [USAF]

MARCH ARB (KRIV)

**⚠** \* Circling not authorized NE of Rwy 14-32. Rapid rising terrain.

MISSED APPROACH: Climb out RIV TACAN R-138 direct BOGLE, continue to climb in hold to 5300.

ATIS <b>134.75 239.05</b>	SOCAL APP CON <b>134.0 278.3</b>	MARCH TOWER <b>127.65 253.5</b>	GND CON <b>121.75 335.8</b>	CLNC DEL <b>121.75 335.8</b>
------------------------------	-------------------------------------	------------------------------------	--------------------------------	---------------------------------



CATEGORY	A	B	C	D	E
S-14	2260-1 $\frac{7}{8}$ 724 (800-1 $\frac{7}{8}$ )		2260-2 724 (800-2)		
<b>CIRCLING*</b>	2260-1 $\frac{7}{8}$ 724 (800-1 $\frac{7}{8}$ )	2260-1 $\frac{7}{8}$ 724 (800-1 $\frac{7}{8}$ )	2300-2 $\frac{1}{4}$ 764 (800-2 $\frac{1}{4}$ )	2440-3 904 (1000-3)	2840-3 1304(1400-3)

# TACAN Y RWY 14

SW-3, 16 JUN 2022 to 14 JUL 2022

SW-3, 16 JUN 2022 to 14 JUL 2022