

RIVERSIDE, CALIFORNIA

# RNAV (GPS) RWY 32

WAAS CH 91364 W32A	APCH CRS 315°	Rwy ldg 13,302	TDZE 1497
		Arprt Elev 1536	

AL-348 (USAF)

MARCH ARB (KRIV)

\* When ALS inop increase CAT ABCD RVR to 40, vis to 3/4 mile.  
 \*\* When ALS inop increase CAT ABCD RVR to 60, vis to 1 1/8 miles.  
 \*\*\* When ALS inop, increase CAT AB RVR to 55, vis to 1 mile; CAT CD vis to 1 3/8 miles.



MISSED APPROACH: Climb to 2100 then climbing left turn to 5500 direct NOKDE and hold, continue climb in hold to 5500.

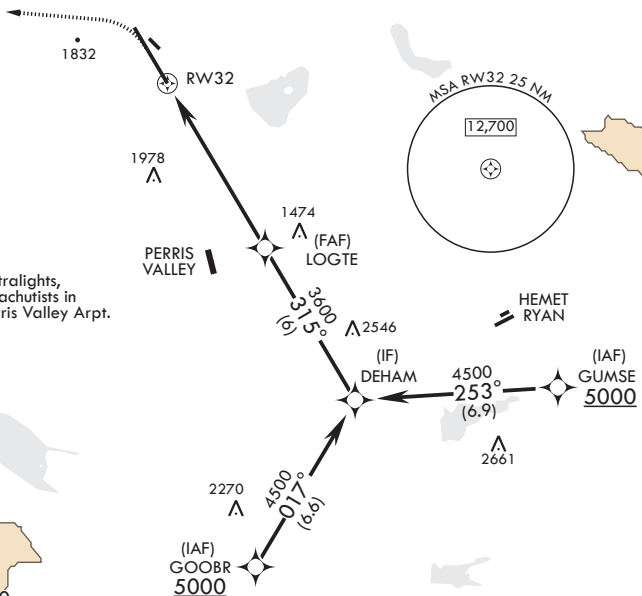
ATIS 134.75 239.05	SOCAL APP CON/DEP CON 134.0 278.3	TOWER 127.65 253.5	GND CON 121.75 335.8	CLNC DEL 121.75 335.8
-----------------------	--------------------------------------	-----------------------	-------------------------	--------------------------

\*\*\*\*Circling NA NE of Rwy 14-32. Rapid rising terrain.

DME/DME RNP-0.3 NA  
 RNP APCH  
 For uncompensated Baro-VNAV systems, Procedure NA below -18°C (0°F) or above 54°C (130°F).



Max holding alt 6100  
 Min holding alt 5500

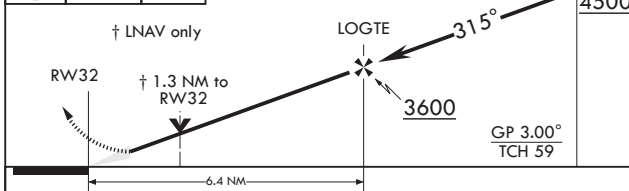


CAUTION: Ultralights, balloons, parachutists in vicinity of Perris Valley Arprt.

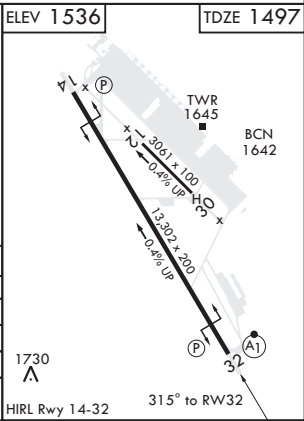
SW-3, 16 JUN 2022 to 14 JUL 2022

SW-3, 16 JUN 2022 to 14 JUL 2022

EMERG SAFE ALT 100 NM 13,700



CATEGORY	A	B	C	D
LPV DA*	1697/24	200	(200-1/2)	
LNVA/VNVA DA**	1909/40	412	(400-3/4)	
LNVA MDA***	1960/24	463 (500-1/2)	1960/50	463 (500-1)
	2180-1 664 (700-1)	2260-1 724 (800-1)	2300-2/4 764 (800-2/4)	2440-3 904 (1000-3)



RIVERSIDE, CALIFORNIA

33°53'N - 117°16'W

MARCH ARB (KRIV)

Amdt 6 31JAN19

# RNAV (GPS) RWY 32