

RIVERSIDE, CALIFORNIA

# RNAV (GPS) RWY 14

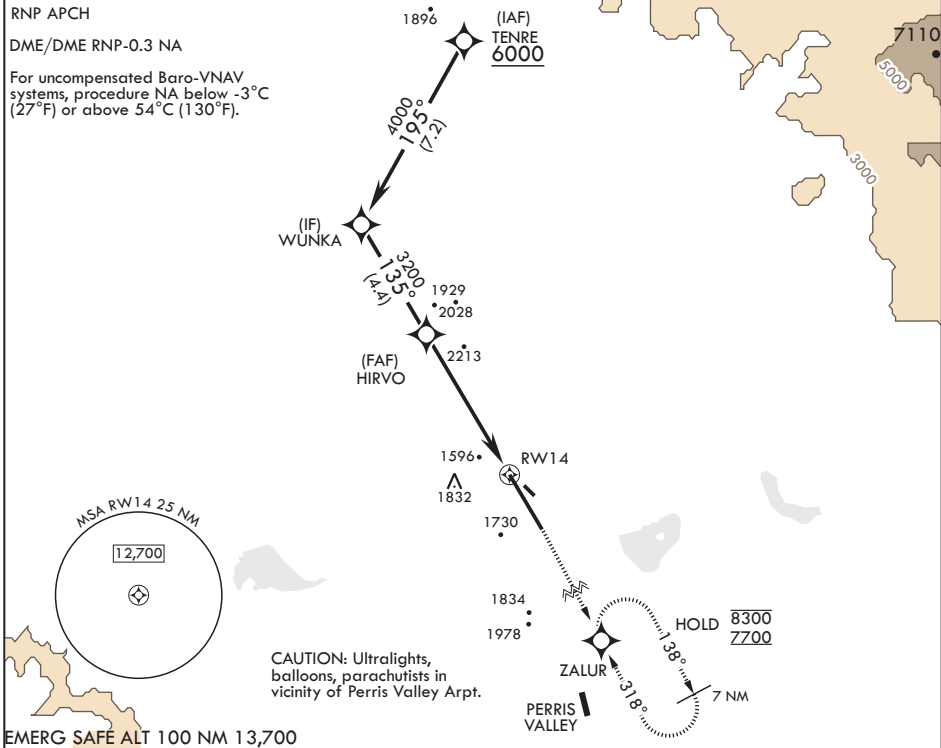
WAAS CH 91363 W14A	APCH CRS 135°	Rwy ldg TDZE 1336	13,302 1536
		Arprt Elev	1536

AL-348 (USAF)

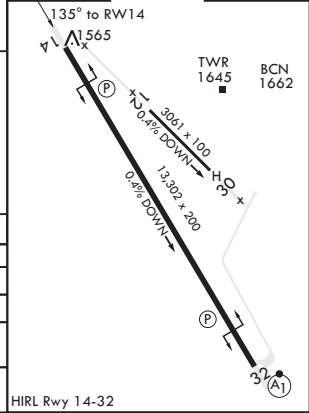
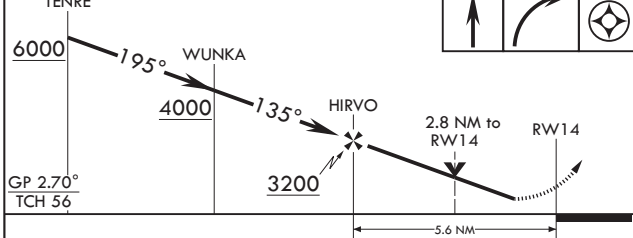
MARCH ARB (KRIV)

**V** \* Circling NA NE of Rwy 14-32. Rapid rising terrain. MISSED APPROACH: Climb to 2300 then climbing right turn direct ZALUR and hold, continue climb in hold to 7700.

ATIS 134.75 239.05	SOCAL APP CON/DEP CON 134.0 278.3	TOWER 127.65 253.5	GND CON 121.75 335.8	CLNC DEL 121.75 335.8
-----------------------	--------------------------------------	-----------------------	-------------------------	--------------------------



TENRE	2300	7700	ZALUR	ELEV 1536	TDZE 1536
-------	------	------	-------	-----------	-----------



CATEGORY	A	B	C	D
LPV DA	1756/40	220	(300-¾)	
LNAV/VNAV DA	2080-1⅝	544	(600-1⅝)	
LNAV MDA	2380/55 844 (900-1)	2380-1¼ 844 (900-1¼)	2380-2½ 844 (900-2½)	844 (900-2½)
<b>C</b> CIRCLING*	2380-1¼ 844 (900-1¼)	844 (900-1¼)	2380-2½ 844 (900-2½)	2440-3 904 (1000-3)

RIVERSIDE, CALIFORNIA 33°53'N - 117°16'W MARCH ARB (KRIV)

Amdt 7 24MAR22 TERPS

# RNAV (GPS) RWY 14

SW-3, 16 JUN 2022 to 14 JUL 2022

SW-3, 16 JUN 2022 to 14 JUL 2022