

ILS or LOC X RWY 32

LOC I-RIV 110.1	APCH CRS 315°	Rwy ldg 13,302 TDZE 1497 Arprt Elev 1536	AL-348 [USAF]	MARCH ARB (KRIV)
---------------------------	-------------------------	---	---------------	------------------

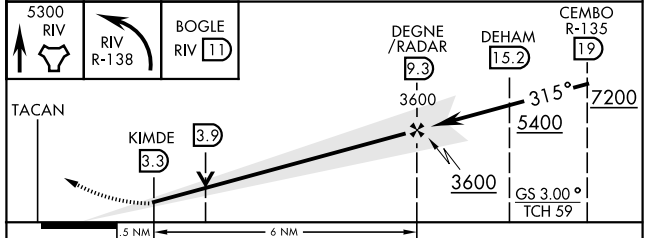
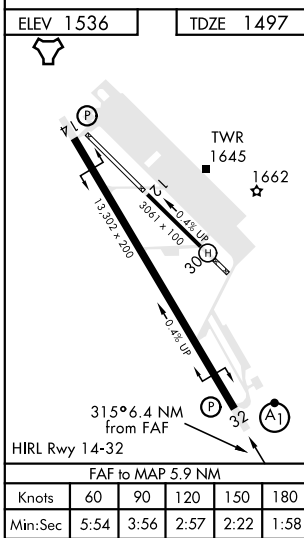
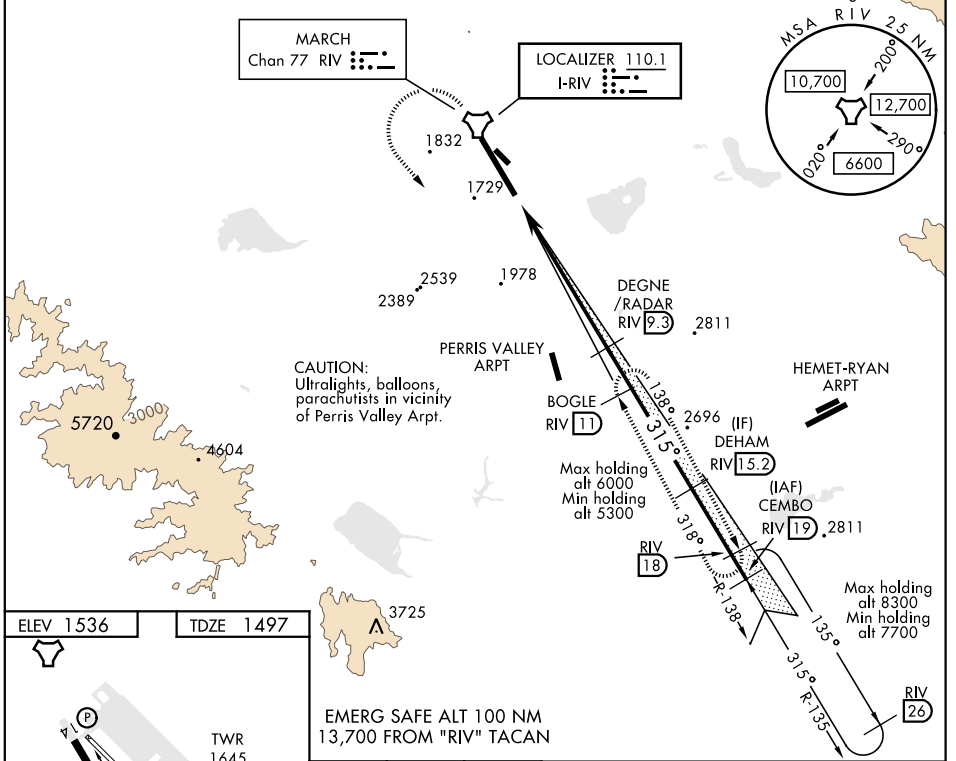
▼ *When ALS inop, increase CAT ABCDE RVR to 40 and vis to ¾ mile.
 **When ALS inop, increase CAT AB RVR to 55 and vis to 1 mile and CAT CDE RVR to 60 and vis to 1 ½ miles.

† MISSED APPROACH: Climb to 5300 direct RIV TACAN, then turn left to intercept RIV R-138 direct BOGLE, continue climb in hold to 5300.

ATIS 134.75 239.05	SOCAL APP CON 134.0 278.3	MARCH TOWER 127.65 253.5	GND CON 121.75 335.8	CLNC DEL 121.75 335.8
------------------------------	-------------------------------------	------------------------------------	--------------------------------	---------------------------------

*** Circling not authorized NE of Rwy 14-32. Rapid rising terrain.

† Missed approach requires use of RNAV or ATC monitoring.



EMERG SAFE ALT 100 NM 13,700 FROM "RIV" TACAN	5300 RIV	BOGLE RIV (11)	DEGNE/RADAR (9.3)	DEHAM (15.2)	CEMBO R-135 (19)
TACAN	KIMDE (3.3)	3600	3600	5400	7200
GS 3.00°	TCH 59				
CATEGORY	A	B	C	D	E
S-ILS 32 *	1697/24		200	(200-½)	
S-LOC 32 **	1900/24	403 (400-½)	1900/40	403 (400-¾)	
ⓐ CIRCLING ***	2180-1 644 (700-1)	2260-1 724 (800-1)	2300-2½ 764 (800-2¼)	2440-3 904 (1000-3)	2840-3 1304 (1400-3)

ILS or LOC X RWY 32

SW-3, 16 JUN 2022 to 14 JUL 2022

SW-3, 16 JUN 2022 to 14 JUL 2022