

RIVERSIDE, CALIFORNIA

# HI-TACAN Z RWY 32

TACAN RIV Chan 77	APCH CRS 318°	Rwy Ldg 13,302 TDZE 1497 Arpt Elev 1536
----------------------	------------------	---

AL-348 [USAF]

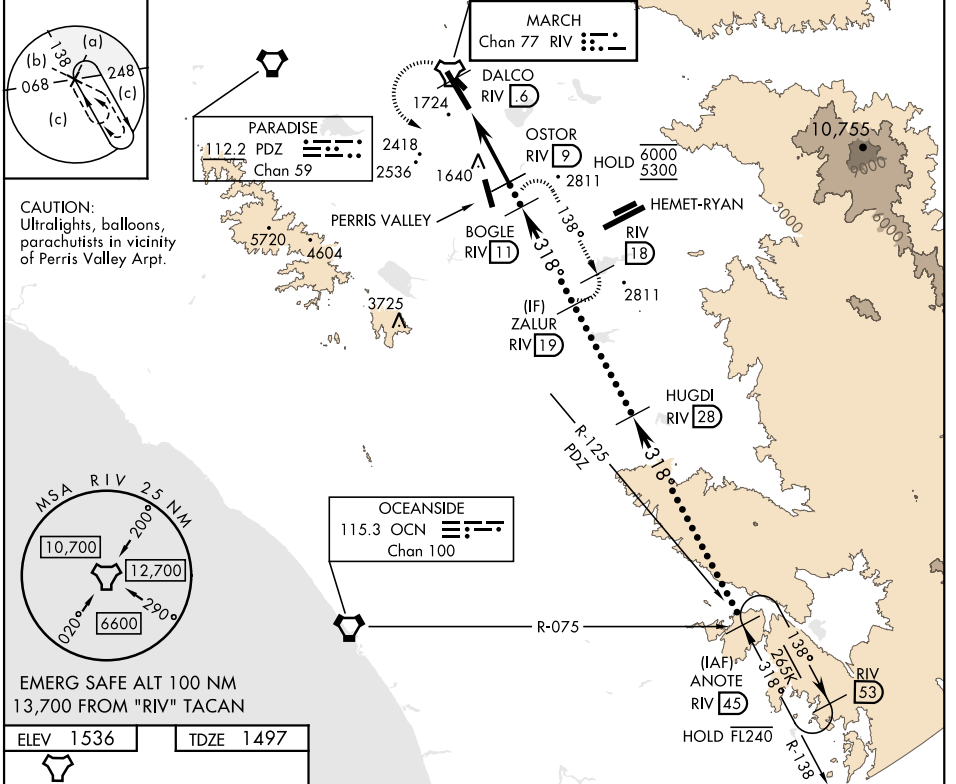
MARCH ARB (KRIV)

▼ \* When ALS inop, increase vis to 1½ miles.  
 \*\* Circling not authorized NE of Rwy 14-32.  
 Rapid rising terrain.

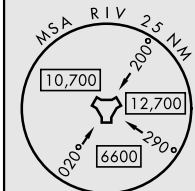


MISSED APPROACH: Climb to 5300 on RIV TACAN  
 R-138 to DALCO, then turn left to intercept RIV R-138  
 direct BOGLE, continue climb in hold to 5300.

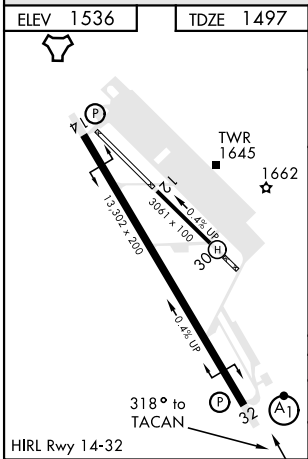
ATIS 134.75 239.05	SOCAL APP CON 134.0 278.3	TOWER 127.65 253.5	GND CON 121.75 335.8	CLNC DEL 121.75 335.8
-----------------------	------------------------------	-----------------------	-------------------------	--------------------------



CAUTION:  
 Ultralights, balloons,  
 parachutists in vicinity  
 of Perris Valley Arpt.



EMERG SAFE ALT 100 NM  
 13,700 FROM "RIV" TACAN



ELEV 1536	TDZE 1497	5300 RIV R-138	DALCO RIV 6	BOGLE RIV 11	ANOTE RIV 45		
		TACAN	CULAX 3.3	OSTOR 9	ZALUR 19	HUGDI 28	FL240
		.5		5.7 NM		3.13° TCH 59	
CATEGORY	C	D	E				
S-32 *	2040/60		543	(600-1½)			
CIRCLING **	2300-2¼ 764 (800-2¼)		2440-3 904 (1000-3)	2840-3 1304 (1400-3)			

RIVERSIDE, CALIFORNIA

33°53'N-117°16'W

MARCH ARB (KRIV)

Amdt 14 31DEC20

# HI-TACAN Z RWY 32

SW-3, 16 JUN 2022 to 14 JUL 2022

SW-3, 16 JUN 2022 to 14 JUL 2022