

LOC I-RIV 110.1	APCH CRS 315°	Rwy ldg 13,302 TDZE 1497 Arpt Elev 1536	JAL-348 [USAF]	MARCH ARB (KRIV)
---------------------------	-------------------------	--	----------------	------------------

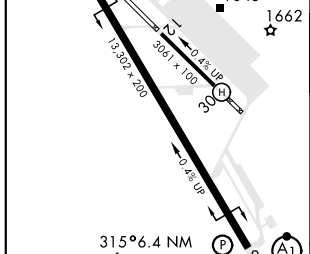
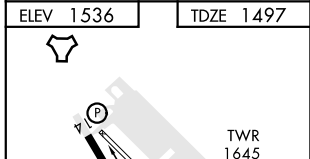
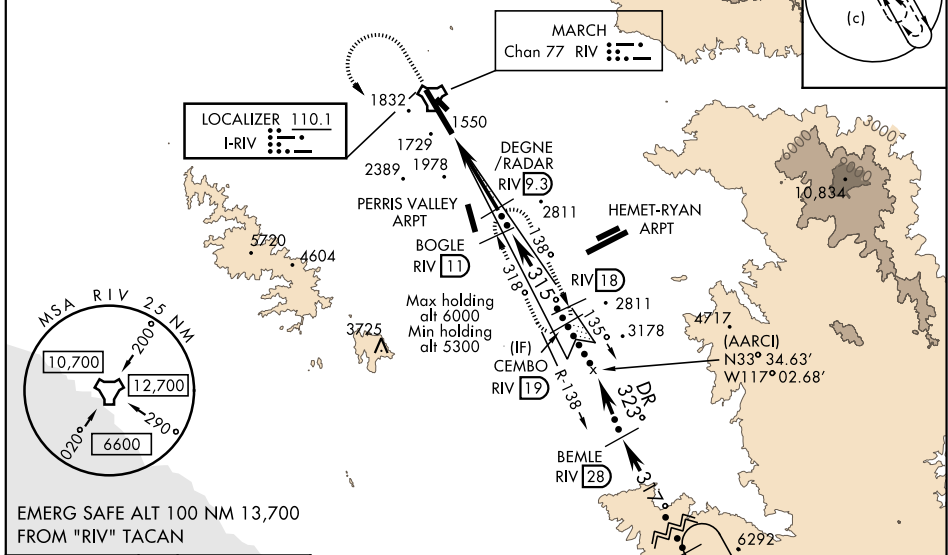
▼ * When ALS inop, increase CAT CDE RVR to 40 and vis to ¾ mile.
 ** When ALS inop, increase CAT CDE RVR to 60 and vis to 1 ½ mile.
 *** Circling not authorized NE of Rwy 14-32. Rapid rising terrain.



† MISSED APPROACH: Climb to 5300 direct RIV TACAN, then turn left to intercept RIV R-138 direct BOGLE, continue climb in hold to 5300.

ATIS 134.75 239.05	SOCAL APP CON 134.0 278.3	MARCH TOWER 127.65 253.5	GND CON 121.75 335.8	CLNC DEL 121.75 335.8
------------------------------	-------------------------------------	------------------------------------	--------------------------------	---------------------------------

CAUTION: Ultralights, balloons, parachutists in vicinity of Perris Valley Arpt.
 † Missed approach requires use of RNAV or ATC RADAR monitoring.



ELEV 1536		TDZE 1497	
RIV R-138 BOGLE RIV (1)		DEGNE/RADAR RIV (2)	
TACAN KIMDE RIV (3)		CEMBO RIV (19)	
BEMLE RIV (28)		HENSA RIV (45)	
CATEGORY C		CATEGORY D	
S-ILS 32 *		S-LOC 32 ***	
Knots	120 140 160 180 200	1697/24	200 (200-½)
Min:Sec	2:57 2:32 2:13 1:58 1:46	1900/40	403 (400-¾)
C CIRCLING		2300-2¼ 764 (800-2¼)	2440-3 904 (1000-3)
			2840-3 1304 (1400-3)

SW-3, 16 JUN 2022 to 14 JUL 2022

SW-3, 16 JUN 2022 to 14 JUL 2022