

WIPOR THREE ARRIVAL (RNAV)

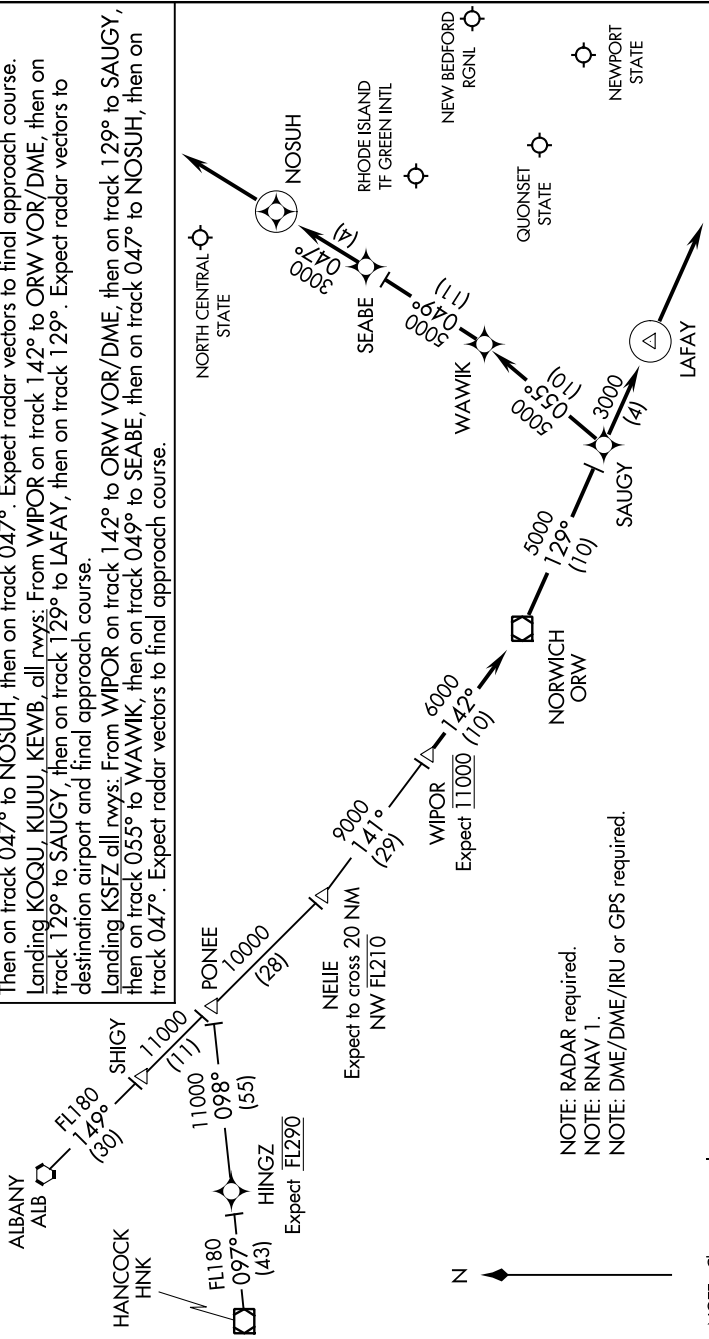
NE-1, 16 JUN 2022 to 14 JUL 2022

PROVIDENCE APP CON★
 123.675 244.875
 EWB ATIS
 126.85
 PVD D-ATIS
 124.2

ARRIVAL ROUTE DESCRIPTION

- ALBANY TRANSITION (ALB.WIPOR3):
- HANCOCK TRANSITION (HNK.WIPOR3):
- HINGZ TRANSITION (HINGZ.WIPOR3):

From WIPOR on track 142° to ORW VOR/DME, then on track 129° to SAUGY.
 Landing KPVD Rwys 5, 34: From SAUGY on track 129° to LAFAY, then on track 129°.
 Expect radar vectors to final approach course.
 Landing KPVD Rwys 16, 23: From SAUGY on track 055° to WAWIK, then on track 049° to SEABE.
 Then on track 047° to NOSUH, then on track 047°. Expect radar vectors to final approach course.
 Landing KOGU, KUUU, KEWB, all rwys: From WIPOR on track 142° to ORW VOR/DME, then on track 129° to SAUGY, then on track 129° to LAFAY, then on track 129°. Expect radar vectors to destination airport and final approach course.
 Landing KSFZ all rwys: From WIPOR on track 142° to ORW VOR/DME, then on track 129° to SAUGY, then on track 055° to WAWIK, then on track 049° to SEABE, then on track 047° to NOSUH, then on track 047°. Expect radar vectors to final approach course.



NOTE: RADAR required.
 NOTE: RNAV 1.
 NOTE: DME/DME/IRU or GPS required.

NOTE: Chart not to scale.

WIPOR THREE ARRIVAL (RNAV)

NE-1, 16 JUN 2022 to 14 JUL 2022